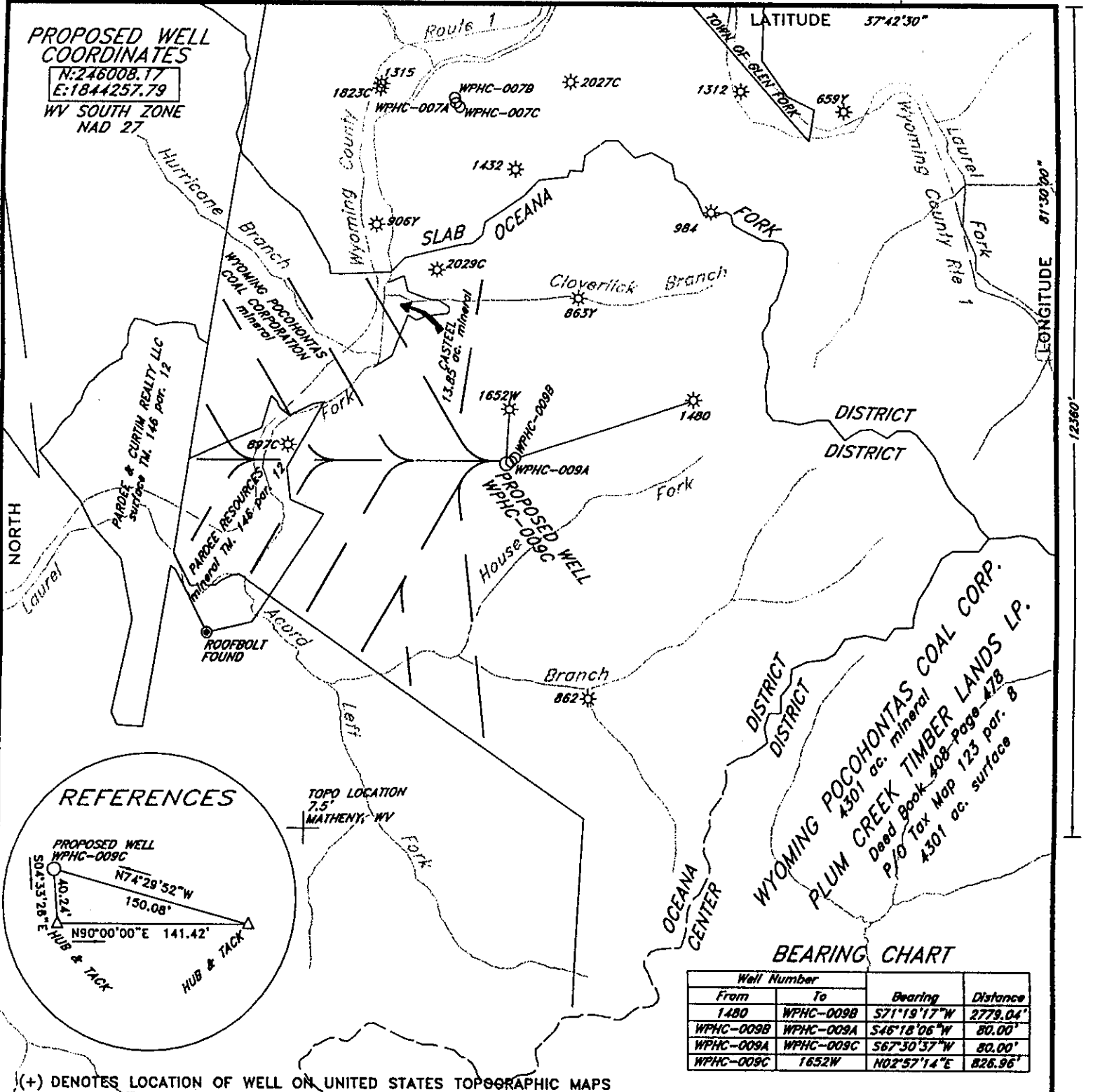


**PROPOSED WELL COORDINATES**  
 N: 246008.17  
 E: 1844257.79  
 WV SOUTH ZONE  
 NAD 27



11020'

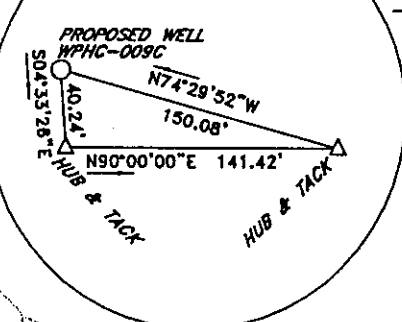
LATITUDE 37°42'30"

NORTH

EDMINGTON

12360'

**REFERENCES**



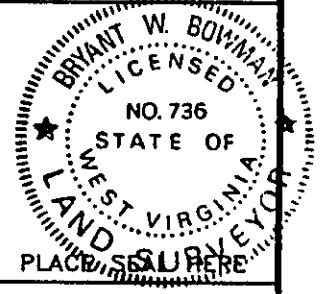
**BEARING CHART**

Well Number		Bearing	Distance
From	To		
1480	WPHC-009B	S71°19'17"W	2779.04'
WPHC-009B	WPHC-009A	S46°18'06"W	80.00'
WPHC-009A	WPHC-009C	S67°30'37"W	80.00'
WPHC-009C	1652W	N02°57'14"E	826.96'

(+) DENOTES LOCATION OF WELL ON UNITED STATES TOPOGRAPHIC MAPS

FILE NO. \_\_\_\_\_  
 DRAWING NO. \_\_\_\_\_  
 SCALE 1"=2000'  
 MINIMUM DEGREE OF ACCURACY 1:20000  
 PROVEN SOURCE OF ELEVATION GPS DISK NO. 1  
 ELEVATION 2347.149

I THE UNDERSIGNED, HEREBY CERTIFY THAT THIS PLAT IS CORRECT TO THE BEST OF MY KNOWLEDGE AND BELIEF AND SHOWS ALL THE INFORMATION REQUIRED BY LAW AND THE REGULATIONS ISSUED AND PRESCRIBED BY THE DEPARTMENT OF ENVIRONMENTAL PROTECTION.  
 (SIGNED) Bryant W. Bowman  
 R.P.E. \_\_\_\_\_ L.L.S. 736



STATE OF WEST VIRGINIA  
 DEPARTMENT OF ENVIRONMENTAL PROTECTION  
 OIL AND GAS DIVISION



DATE AUGUST 6, 2003  
 OPERATOR'S WELL NO. WPHC-009C  
 API WELL NO.

WELL TYPE: OIL  GAS  LIQUID INJECTION  WASTE DISPOSAL   
 (IF "GAS,") PRODUCTION  STORAGE  DEEP  SHALLOW

LOCATION: ELEVATION 2198.09' WATERSHED HOUSE FORK OF ACCORD BRANCH OF LAUREL FORK  
 DISTRICT OCEANA COUNTY WYOMING  
 QUADRANGLE MATHENY, WV

SURFACE OWNER PLUM CREEK TIMBER LANDS LP. ACREAGE 30000±  
 OIL & GAS ROYALTY OWNER PENN VIRGINIA OIL & GAS CORPORATION LEASE ACREAGE 30000±  
 LEASE NO. \_\_\_\_\_

PROPOSED WORK: DRILL  CONVERT  DRILL DEEPER  REDRILL  FRACTURE OR STIMULATE  PLUG OFF OLD FORMATION  PERFORATE NEW FORMATION  OTHER PHYSICAL CHANGE IN WELL (SPECIFY) \_\_\_\_\_

PLUG AND ABANDON  CLEAN OUT AND REPLUG   
 TARGET FORMATION \_\_\_\_\_ ESTIMATED DEPTH 1480'

WELL OPERATOR PENN VIRGINIA OIL & GAS CORPORATION DESIGNATED AGENT MR. HARRY JEWEL  
 ADDRESS 2550 EAST STONE DRIVE SUITE 110 ADDRESS PO BOX 460  
 KINGSFORT, TN 37660 RAVENCLIFF, WV 25913

COUNTY NAME WYO  
 PERMIT 0330

State of West Virginia  
Division of Environmental Production  
Section of Oil and Gas

Well Operator's Report of Well Work

Farm Name Georgia Pacific Corporation

Operator Well No.: WPHC-009C

LOCATION: Elevation: 2198.09

Quadrangle: Matheny 7 1/2'

District: Oceana County: Wyoming  
Latitude: 12360 Feet South of 37 Deg. 42 Min. 30 Sec.  
Longitude: 11020 Feet West of 81 Deg. 30 Min. 00 Sec.

Company:

**Penn Virginia Oil & Gas Corporation**

	Casing and Tubing	Used in drilling	Left in well	Cement fill up Cu. Ft.
Address: 2550 East Stone Drive, Suite 110	13 3/8"	19'	19'	0
Kingsport, TN 37660	9 5/8"	226'	226'	72
Agent: Harry Jewell	7"	1053'	1053'	158
Inspector: Ralph Triplett	2 7/8"	1409'	1409'	0
Date Permit Issued: 09/22/2003				
Date Well Work Commenced: 09/30/2003				
Date Well Work Completed: 07/18/2004				
Verbal Plugging:				
Date Permission granted on:				
Rotary X Cable Rig				
Total Depth (feet): 1,497				
Fresh Water Depth (ft):				
Salt Water Depth (ft):				
Is coal being mined in area (N/Y)?				
Coal Depths (ft):				

OPEN FLOW DATA

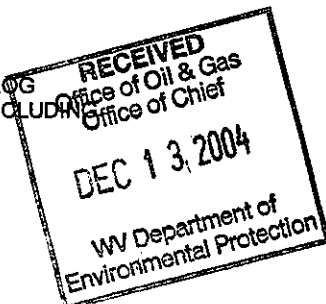
Producing formation Fire Creek Coal and Poca 6 Coals Pay zone depth (ft) \_\_\_\_\_  
 Gas: Initial open flow \_\_\_\_\_ MCF/d Oil: Initial open flow \_\_\_\_\_ Bbl/d  
 Final open flow 4000 MCF/d Final open flow \_\_\_\_\_ Bbl/d  
 Time of open flow between initial and final tests: \_\_\_\_\_ Hours  
 Static rock pressure 250 psig (surface pressure) after 144 Hours

Second producing formation \_\_\_\_\_ Pay zone depth (ft) \_\_\_\_\_  
 Gas: Initial open flow \_\_\_\_\_ MCF/d Oil: Initial open flow \_\_\_\_\_ Bbl/d  
 Final open flow \_\_\_\_\_ MCF/d Final open flow \_\_\_\_\_ Bbl/d  
 Time of open flow between initial and final tests: \_\_\_\_\_ Hours  
 Static rock pressure \_\_\_\_\_ psig (surface pressure) after \_\_\_\_\_ Hours

NOTE: ON BACK OF THIS FORM PUT THE FOLLOWING: 1). DETAILS OF PERFORATED INTERVALS, FRACTURING OR STIMULATING, PHYSICAL CHANE, TEC. 2). THE WELL LOG WHICH IS A SYSTEMATIC DETAILED GEOLOGICAL RECORD OF ALL FORMATIONS, INCLUDING COAL ENCOUNTERED BY THE WELLBORE.

Signed:

By: Michael P. Dampier  
Date: 12/09/2004



WYO 2330 C

DETAILS OF PERFORATIONS, FRACTURING, OR PHYSICAL CHANGE, ETC.

---

<u>FORMATIONS</u>	<u>TOP (TVD)</u>	<u>BOTTOM (TVD)</u>	<u>REMARKS</u>
Sandstone, Shale & Coal	0	1295.65	
Fire Creek Coal	1295.65	1298.55	Drilled Horizontal
Sandstone & Shale	1298.55	1412.37	
Pocahontas #6 Coal	1412.37	1414.37	Drilled Horizontal

DEC 30 2004