

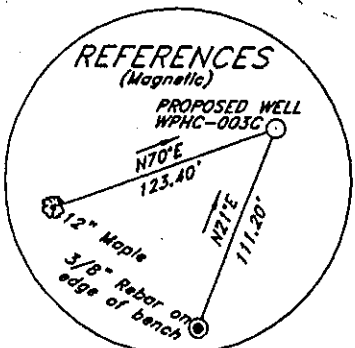
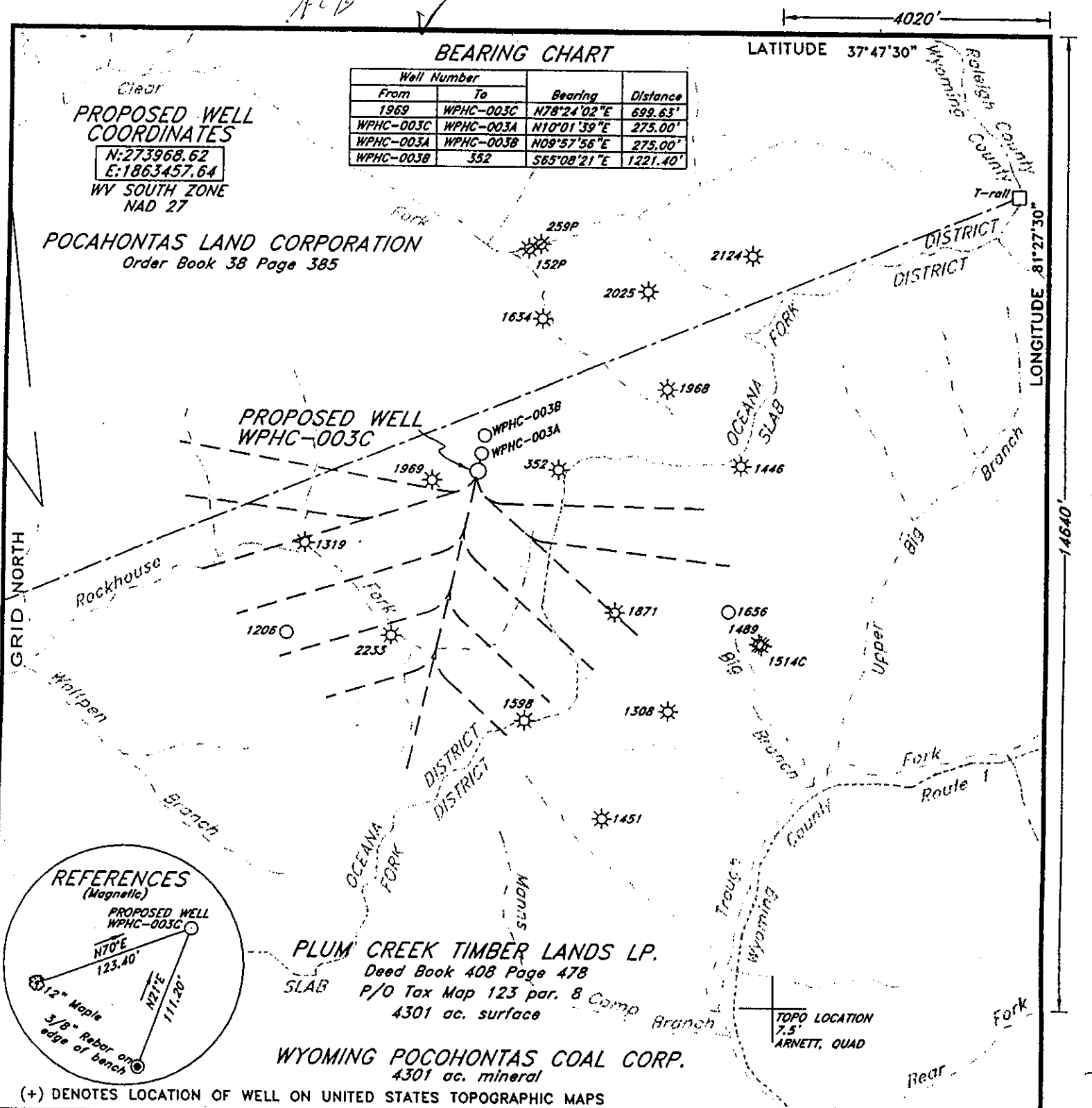
BEARING CHART

LATITUDE 37°47'30"

Well Number		Bearing	Distance
From	To		
1969	WPHC-003C	N78°24'02"E	699.63'
WPHC-003C	WPHC-003A	N10°01'39"E	275.00'
WPHC-003A	WPHC-003B	N09°57'56"E	275.00'
WPHC-003B	352	S85°08'21"E	1221.40'

Clear
PROPOSED WELL COORDINATES
 N: 273968.62
 E: 1863457.64
 WY SOUTH ZONE
 NAD 27

POCAHONTAS LAND CORPORATION
 Order Book 38 Page 385



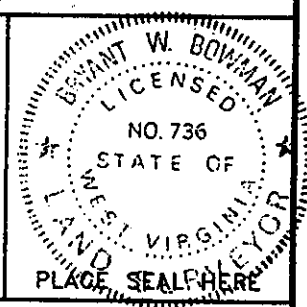
PLUM CREEK TIMBER LANDS LP.
 Deed Book 408 Page 478
 SLAB P/O Tax Map 123 par. 8 Comp
 4301 ac. surface

WYOMING POCAHONTAS COAL CORP.
 4301 ac. mineral

(+) DENOTES LOCATION OF WELL ON UNITED STATES TOPOGRAPHIC MAPS

FILE NO. _____
 DRAWING NO. _____
 SCALE 1"=2000'
 MINIMUM DEGREE OF ACCURACY 1:20000
 PROVEN SOURCE OF ELEVATION GPS DISK NO. L
 ELEVATION 2735.48

I THE UNDERSIGNED, HEREBY CERTIFY THAT THIS PLAT IS CORRECT TO THE BEST OF MY KNOWLEDGE AND BELIEF AND SHOWS ALL THE INFORMATION REQUIRED BY LAW AND THE REGULATIONS ISSUED AND PRESCRIBED BY THE DEPARTMENT OF ENVIRONMENTAL PROTECTION.
 (SIGNED) [Signature]
 R.P.E. _____ L.L.S. 736



STATE OF WEST VIRGINIA
 DEPARTMENT OF ENVIRONMENTAL PROTECTION
 OIL AND GAS DIVISION

DATE NOVEMBER 19, 2003
 OPERATOR'S WELL NO. WPHC-003C
 API WELL NO. 47-109-02351C
 STATE COUNTY PERMIT

WELL TYPE: OIL GAS LIQUID INJECTION WASTE DISPOSAL
 (IF "GAS,") PRODUCTION STORAGE DEEP SHALLOW

LOCATION: ELEVATION 2732.20' WATERSHED ROCKHOUSE FORK OF CLEAR FORK
 DISTRICT OCEANA COUNTY WYOMING
 QUADRANGLE ARNETT, WY

SURFACE OWNER PLUM CREEK TIMBER LANDS LP. ACREAGE 4301±
 OIL & GAS ROYALTY OWNER PENN VIRGINIA OIL & GAS CORPORATION LEASE ACREAGE 30000±
 LEASE NO. _____

PROPOSED WORK: DRILL CONVERT DRILL DEEPER REDRILL FRACTURE OR STIMULATE PLUG OFF OLD FORMATION PERFORATE NEW FORMATION OTHER PHYSICAL CHANGE IN WELL (SPECIFY) _____

PLUG AND ABANDON CLEAN OUT AND REPLUG

TARGET FORMATION Beetley coal ESTIMATED DEPTH 165'
 WELL OPERATOR PENN VIRGINIA OIL & GAS CORPORATION DESIGNATED AGENT MR. HARRY JEWEL
 ADDRESS 2550 EAST STONE DRIVE SUITE 110 ADDRESS PO BOX 460
KINGSPORT, TN 37660 RAVENCLIFF, WY 25913



WYO COUNTY NAME PERMIT 2351C

1-6 (248)

for

State of West Virginia
Division of Environmental Production
Section of Oil and Gas
Well Operator's Report of Well Work

Farm Name The Forest Land Group, LLC

Operator Well No.: WPHC-003C

LOCATION: Elevation: 2732.2

Quadrangle: Arnett 7 1/2'

District: Oceana County: Wyoming
Latitude: 14640 Feet South of 37 Deg. 47 Min. 30 Sec.
Longitude: 4020 Feet West of 81 Deg. 27 Min. 30 Sec.

Company:

Penn Virginia Oil & Gas Corporation

	Casing and Tubing	Used in drilling	Left in well	Cement fill up Cu. Ft.
Address: 2550 East Stone Drive, Suite 110 Kingsport, TN 37660	13 3/8"	42'	42'	0
Agent: Harry Jewell	7"	1566'	1566'	236
Inspector: Ralph Triplett				
Date Permit Issued: 01/15/2004				
Date Well Work Commenced: 02/18/2004				
Date Well Work Completed: 11/19/2004				
Verbal Plugging:				
Date Permission granted on:				
Rotary X Cable Rig				
Total Depth (feet): <u>4,585</u> <i>1670'</i>				
Fresh Water Depth (ft):				
Salt Water Depth (ft):				
Is coal being mined in area (N/Y)? <u>N</u>				
Coal Depths (ft):				

OPEN FLOW DATA

Producing formation Lower Beckley Coals Pay zone depth (ft) 1626'
 Gas: Initial open flow 0 MCF/d Oil: Initial open flow _____ Bbl/d
 Final open flow _____ MCF/d Final open flow _____ Bbl/d
 Time of open flow between initial and final tests: _____ Hours
 Static rock pressure _____ psig (surface pressure) after _____ Hours

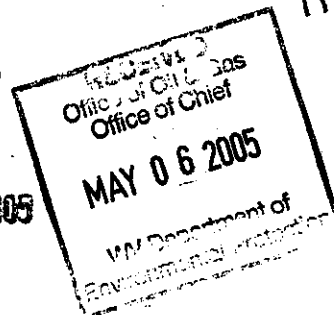
Second producing formation _____ Pay zone depth (ft) _____
 Gas: Initial open flow _____ MCF/d Oil: Initial open flow _____ Bbl/d
 Final open flow _____ MCF/d Final open flow _____ Bbl/d
 Time of open flow between initial and final tests: _____ Hours
 Static rock pressure _____ psig (surface pressure) after _____ Hours

NOTE: ON BACK OF THIS FORM PUT THE FOLLOWING: 1). DETAILS OF PERFORATED INTERVALS, FRACTURING OR STIMULATING, PHYSICAL CHANE, TEC. 2). THE WELL LOG WHICH IS A SYSTEMATIC DETAILED GEOLOGICAL RECORD OF ALL FORMATIONS, INCLUDING COAL ENCOUNTERED BY THE WELLBORE.

Signed:

Michael E. Stamper
By: MICHAEL E. STAMPER
Date: 4/3/2005

MAY 20 2005



WYO 2351C

DETAILS OF PERFORATIONS, FRACTURING, OR PHYSICAL CHANGE, ETC.

<u>FORMATIONS</u>	<u>TOP</u>	<u>BOTTOM</u>	<u>REMARKS</u>
Sandstone/Shale	0	265	
Coal	265	267	
Sandstone/Shale	267	294	
Coal	294	296	
Sandstone/Shale	296	508	
Coal	508	510	
Sandstone/Shale	510	591	
Coal	591	596	
Sandstone/Shale	596	626	
Coal	626	628	
Sandstone/Shale	628	707	
Coal	707	711	
Sandstone/Shale	711	840	
Coal	840	847	
Sandstone/Shale	847	1180	
Coal	1180	1182	
Sandstone/Shale	1182	1348	
Coal	1348	1350	
Sandstone/Shale	1350	1547	
Coal	1547	1549	
Sandstone/Shale	1549	1621	
Coal (Lower Beckley)	1621	1626	1626 TVD Turned Horizontal in Coal
Sandstone/Shale	1626	1674	

MAY 20 2005