

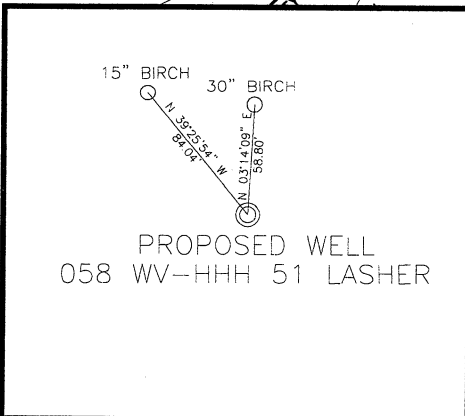
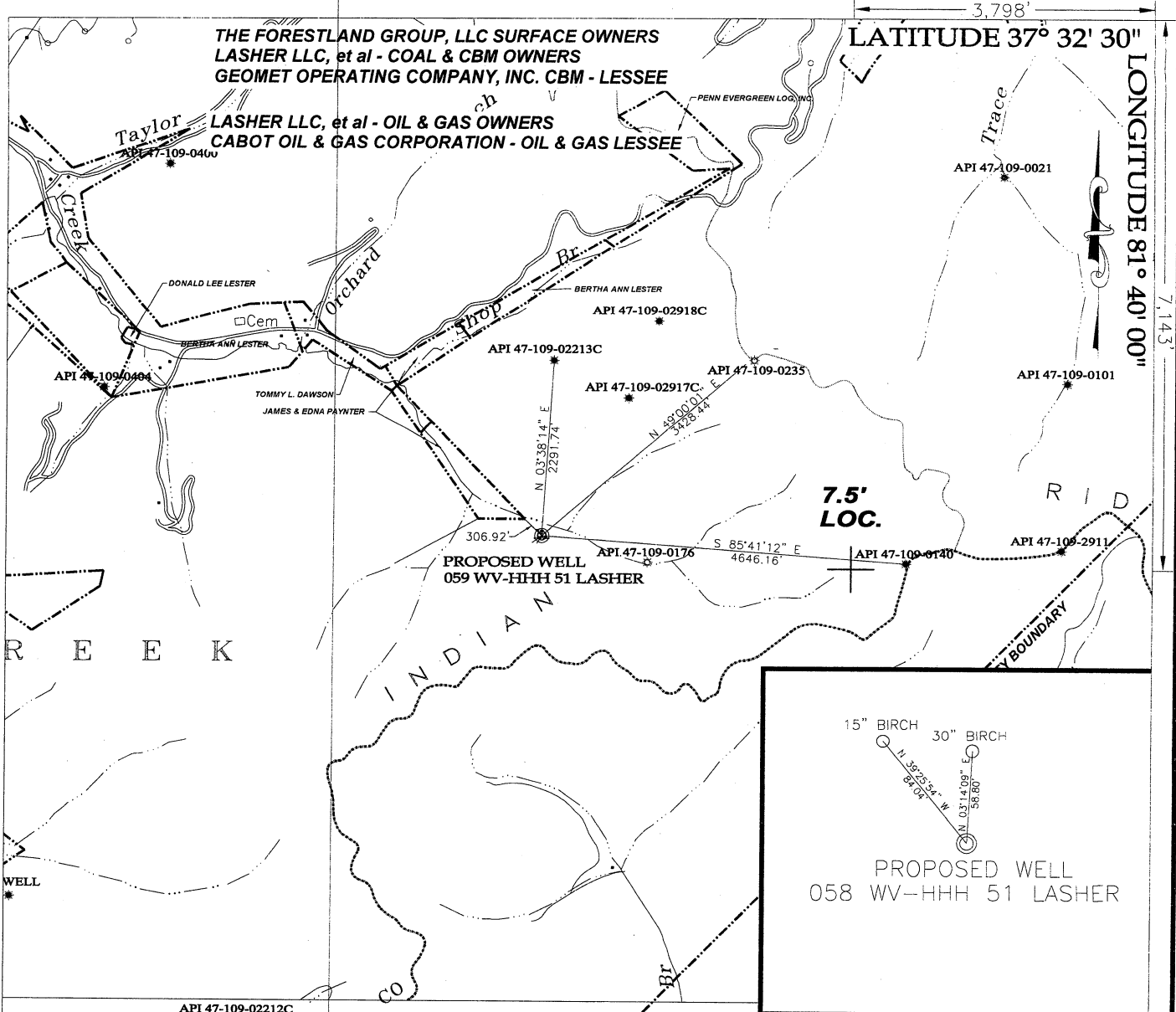
3,798'

LATITUDE 37° 32' 30"

LONGITUDE 81° 40' 00"

THE FORESTLAND GROUP, LLC SURFACE OWNERS
LASHER LLC, et al - COAL & CBM OWNERS
GEOMET OPERATING COMPANY, INC. CBM - LESSEE

LASHER LLC, et al - OIL & GAS OWNERS
CABOT OIL & GAS CORPORATION - OIL & GAS LESSEE



(+) DENOTES LOCATION OF WELL ON 7.5' TOPOGRAPHIC MAP
ALL BOUNDARY LINES ARE APPROXIMATE (NOT SURVEYED)

REFERENCES SCALE 1"=100'

WELL COORDINATES
WV STATE PLANE
SOUTH ZONE NAD 1927
N. 190816.01
E. 1802851.27

TEE Engineering Company, Inc.

320 Cutters Hill Court
Lexington, KY 40509
(859) 263-5350
Fax (859) 263-5345



P.O. Box 219
Stanville, KY 41659
(606) 478-9024
Fax (606) 478-9019

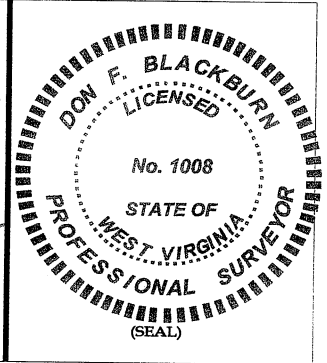
GeoMet Operating Company, Inc.
Well No. 059 WV-HHH 51 LASHER

FILE NO. 1883-08/2007 WELLS
DRAWING NO. LASHER 059
SCALE: 1" = 2,000'
MIN. DEGREE OF ACCURACY 1:2,500
PROVEN SOURCE OF ELEVATION
GPS STATION TEC-1 (ELEV. 2406.60)

I, THE UNDERSIGNED, HEREBY CERTIFY THAT THIS PLAT IS CORRECT TO THE BEST OF MY KNOWLEDGE AND BELIEF AND SHOWS ALL THE INFORMATION REQUIRED BY LAW AND THE REGULATIONS ISSUED AND PRESCRIBED BY THE DEPARTMENT OF MINES.

Don F. Blackburn
(SIGNATURE)

R.P.E. _____ R.P.S. 1008



STATE OF WEST VIRGINIA

DEPARTMENT OF ENVIRONMENTAL PROTECTION
OFFICE OF OIL AND GAS

DATE FEBRUARY 22, 2008
OPERATOR'S WELL NO. 059 WV-HHH 51 LASHER
API WELL NO. 47 - 109 - 03013 C
STATE COUNTY PERMIT

WELL TYPE: OIL GAS X CBM LIQUID INJECTION WASTE DISPOSAL
(IF "GAS") PRODUCTION STORAGE DEEP SHALLOW
LOCATION: ELEVATION 1603.65 NORTHING 190816.01 EASTING 1802851.27
DISTRICT HUFF CREEK WATER SHED LITTLE HUFF CREEK
QUADRANGLE BAILEYSVILLE COUNTY WYOMING

CANCELLED

SURFACE OWNER THE FORESTLAND GROUP, LLC ACREAGE
CBM ROYALTY OWNER LASHER LLC, et al LEASE ACREAGE 16,548.2

LEASE NO. RECORDING IN PROGRESS

PROPOSED WORK: DRILL X CONVERT DRILL DEEPER REDRILL FRACTURE OR
STIMULATE X PLUG OFF OLD FORMATION PEFORATE NEW
FORMATION OTHER PHYSICAL CHANGE IN WELL (SPECIFY)

PLUG AND ABANDON CLEAN OUT AND REPLUG

TARGET FORMATION NEW RIVER AND POCAHONTAS COALS ESTIMATED DEPTH 1353'
WELL OPERATOR GEOMET OPERATING COMPANY, INC. DESIGNATED AGENT CT CORPORATION SYSTEM
ADDRESS 5336 STADIUM TRACE PARKWAY SUITE 206 BIRMINGHAM, ALABAMA 35244 ADDRESS 707 VA. STREET EAST CHARLESTON, WV 25301