

Kanawha 2718

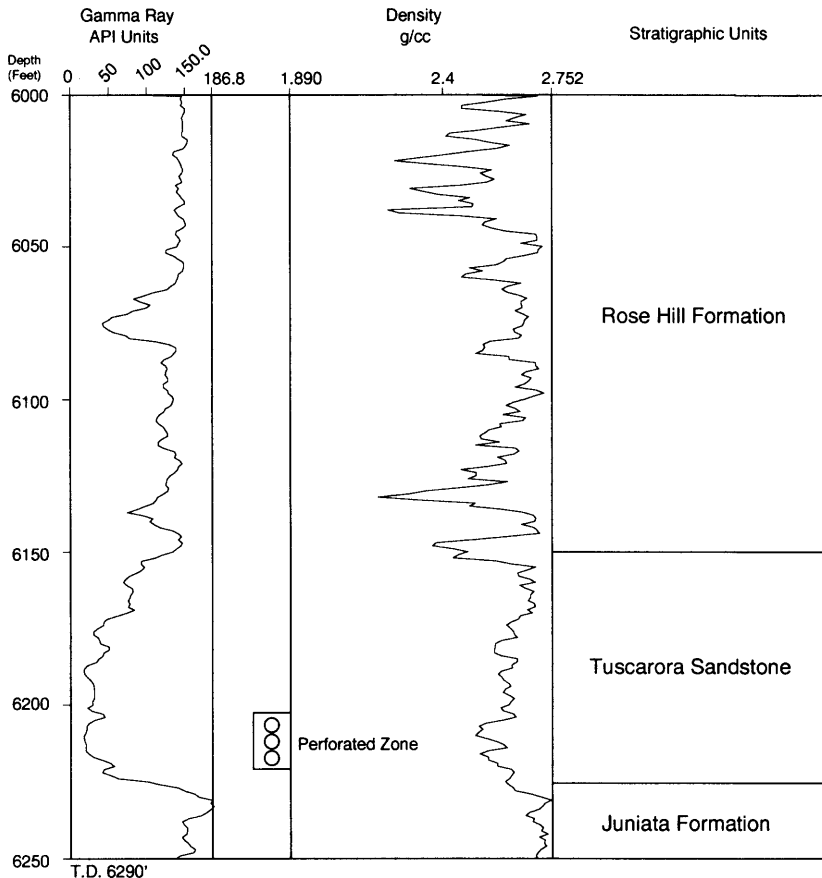


Figure Sts-13. Type logs (gamma-ray and bulk density) for the Tuscarora Sandstone, Indian Creek field, Columbia Gas Transmission Corporation No. 5 (20307-T) Fee (Kanawha 2718) Kanawha County, West Virginia, showing porous productive zone in the lower portion of the formation. The thinner, shaley nature of the Tuscarora can be compared to the thicker, sandier Tuscarora in the type logs from Cucumber Creek field, West Virginia (Figure Sts-18), and Leadmine field, West Virginia (Figure Sts-16). (Avary, 1996)