



**RADIAL CEMENT BOND  
GAMMA RAY  
VDL, CCL**

Company ANTERO RESOURCES CORPORATION  
Well BILL UNIT 3H  
Field MARCELLUS  
County RITCHIE  
State WV

Company ANTERO RESOURCES CORPORATION  
Well BILL UNIT 3H  
Field MARCELLUS  
County RITCHIE State WV

Location: API #: 47085102570000 Other Services

Permanent Datum	SEC	TWP	RGE	Elevation
Log Measured From				K.B.
Drilling Measured From				D.F.
				G.L.

Date	1-11-19			
Run Number	1			
Depth Driller	13348'			
Depth Logger	6858'			
Bottom Logged Interval	6858'			
Top Log Interval	SURFACE			
Open Hole Size	5.5" CASING			
Type Fluid	WATER			
Density / Viscosity	N/A			
Max. Recorded Temp.	137 DEG			
Estimated Cement Top	406			
Time Well Ready	N/A			
Time Logger on Bottom	10:39			
Equipment Number	640		CREW	
Location	BRIDGEPORT WW		K NICHOLAS	
Recorded By	PAT DAVIDSON		J TATE	
Witnessed By	JOHN MAXWELL		J AMAN	

**Borehole Record**      **Casing Record**

Run Number	Bit	From	To	Size	Weight	From	To
				13.375		SURFACE	605'
				9.625		SURFACE	2542'
				5.5	23#	SURFACE	13348'

<<< Fold Here >>>

All interpretations are opinions based on inferences from electrical or other measurements and we cannot and do not guarantee the accuracy or correctness of any interpretation, and we shall not, except in the case of gross or willful negligence on our part, be liable or responsible for any loss, costs, damages, or expenses incurred or sustained by anyone resulting from any interpretation made by any of our officers, agents or employees. These interpretations are also subject to our general terms and conditions set out in our current Price Schedule.

**Comments**

**CBL IS CORRELATED TO PRODUCTION CASING TALLEY MARKER JOINT  
DEPTH SHIFTED  
+3' TO KB AFTER CORRELATION  
MARKER JOINT RECORDED AT 6002 TO 6012'  
BOTTOM HOLE TEMP 137 DEG  
RAN UNDER PRESSURE @1500PSI**



**MAIN PASS UNDER 1500PSI**

Database File: f:\antero\antero bison pad\antero\_bill3h.db  
 Dataset Pathname: pass9.1  
 Presentation Format: antero  
 Dataset Creation: Fri Jan 11 12:32:15 2019 by Calc 7.0 B1  
 Charted by: Depth in Feet scaled 1:240

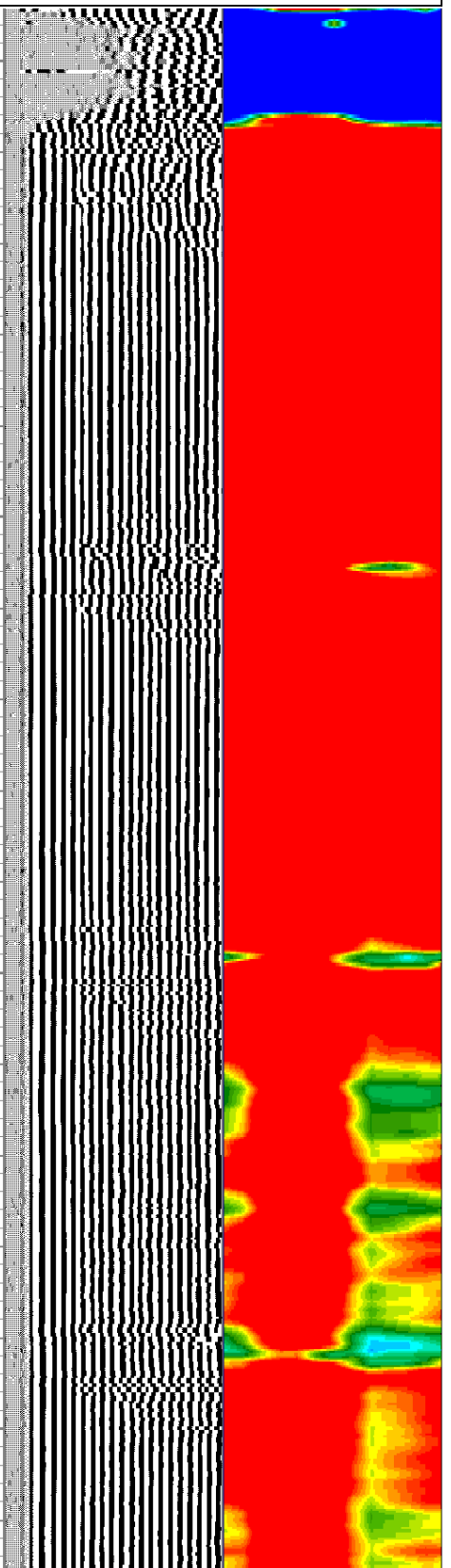
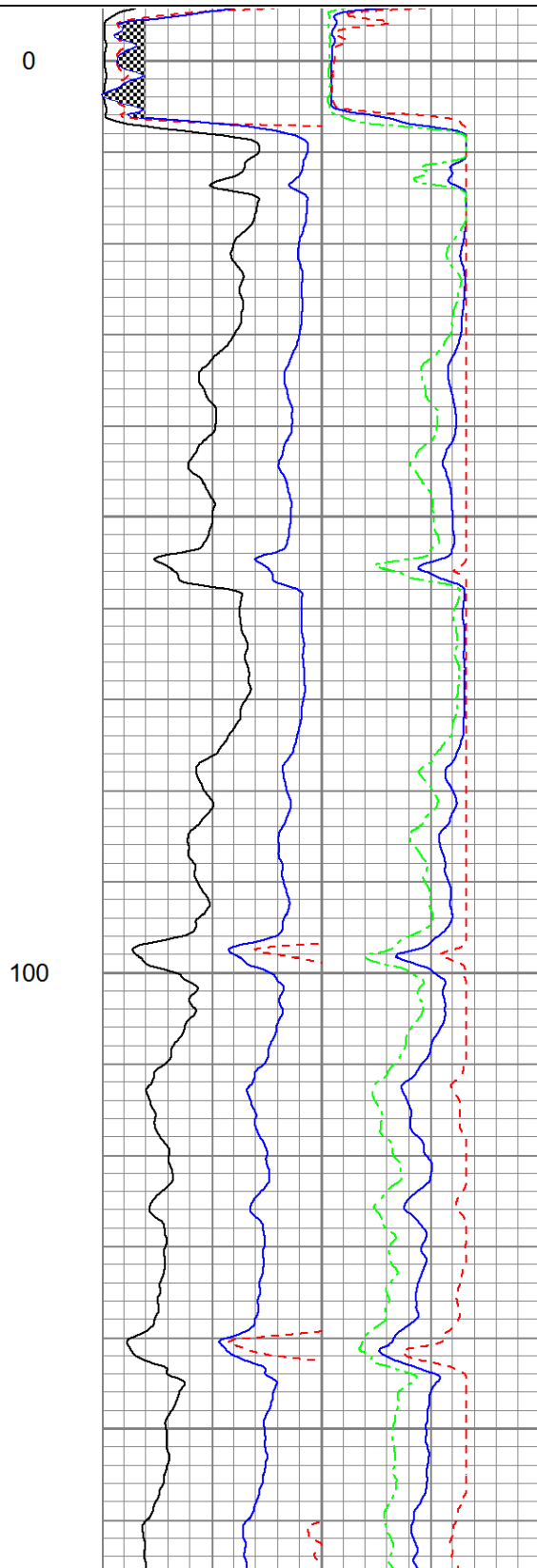
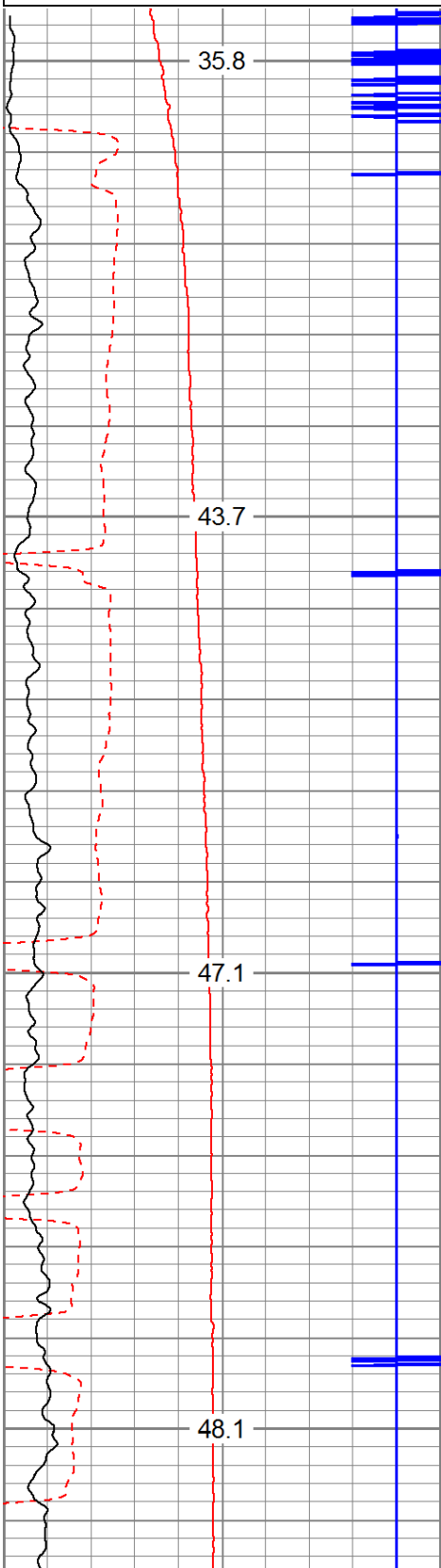
225	Travel Time (usec)	125
9	Casing Collars	-1
0	Gamma Ray	180
0	TEMP (degF)	100

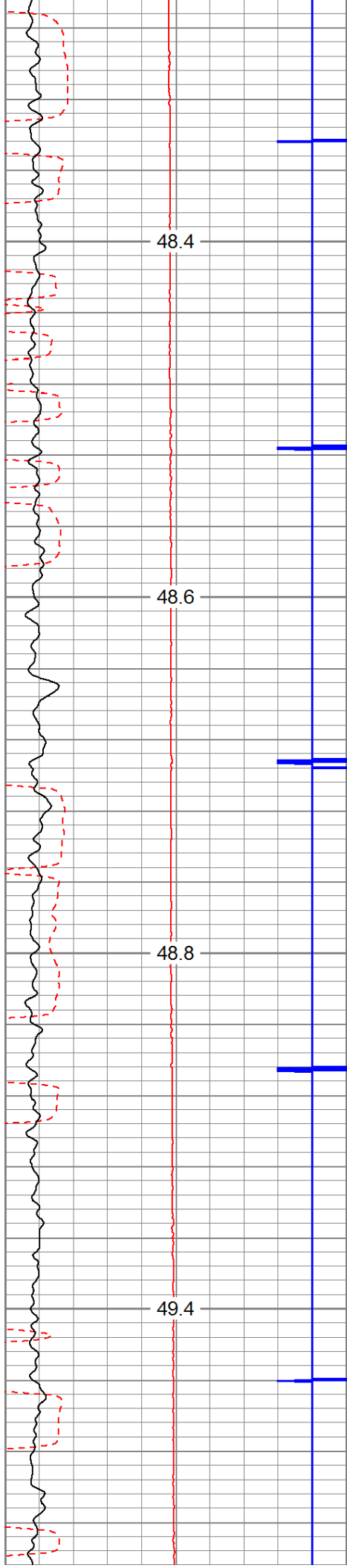
Amplitude	0	Amp Avg	150
(mV)	100	Amp Max	150
AmpX5 (mV)	20	Amp Min	150
BONDIX	0		

200 VDL 1200 1 Sector Map 12  
 20 60



TEMP (degF)





200

300

