



**RADIAL CEMENT BOND
GAMMA RAY
VDL, CCL**

Company ANTERO RESOURCES CORPORATION
Well WACO UNIT 2H
Field MARCELLUS
County RITCHIE
State WV

Company ANTERO RESOURCES CORPORATION
Well WACO UNIT 2H
Field MARCELLUS
County RITCHIE State WV

Location: API #: 47085103560000 Other Services

Permanent Datum	SEC	TWP	RGE	Elevation
Log Measured From				K.B.
Drilling Measured From				D.F.
				G.L.

Date	1-12-19			
Run Number	1			
Depth Driller	17577'			
Depth Logger	6868'			
Bottom Logged Interval	6868'			
Top Log Interval	SURFACE			
Open Hole Size	5.5" CASING			
Type Fluid	WATER			
Density / Viscosity	N/A			
Max. Recorded Temp.	138 DEG			
Estimated Cement Top	230'			
Time Well Ready	N/A			
Time Logger on Bottom	16:40			
Equipment Number	640		CREW	
Location	BRIDGEPORT WW		K NICHOLAS	
Recorded By	PAT DAVIDSON		J TATE	
Witnessed By	JOHN MAXWELL		J AMAN	

Borehole Record

Casing Record

Run Number	Bit	From	To	Size	Weight	From	To
				13.375		SURFACE	561'
				9.625		SURFACE	2578'
				5.5	23#	SURFACE	17577'

<<< Fold Here >>>

All interpretations are opinions based on inferences from electrical or other measurements and we cannot and do not guarantee the accuracy or correctness of any interpretation, and we shall not, except in the case of gross or willful negligence on our part, be liable or responsible for any loss, costs, damages, or expenses incurred or sustained by anyone resulting from any interpretation made by any of our officers, agents or employees. These interpretations are also subject to our general terms and conditions set out in our current Price Schedule.

Comments

CBL IS CORRELATED TO PRODUCTION CASING TALLEY MARKER JOINT
DEPTH SHIFTED 10' TO KB AFTER CORRELATION
MARKER JOINT RECORDED AT 5664' TO 5675'
BOTTOM HOLE TEMP 138 DEG
LOG RAN UNDER PRESSURE @1500PSI



MAIN PASS 1500 PSI

Database File: f:\2019 antero\antero bison pad\antero_waco2h.db
 Dataset Pathname: pass7.1
 Presentation Format: antero
 Dataset Creation: Sat Jan 12 18:48:11 2019 by Calc 7.0 B1
 Charted by: Depth in Feet scaled 1:240

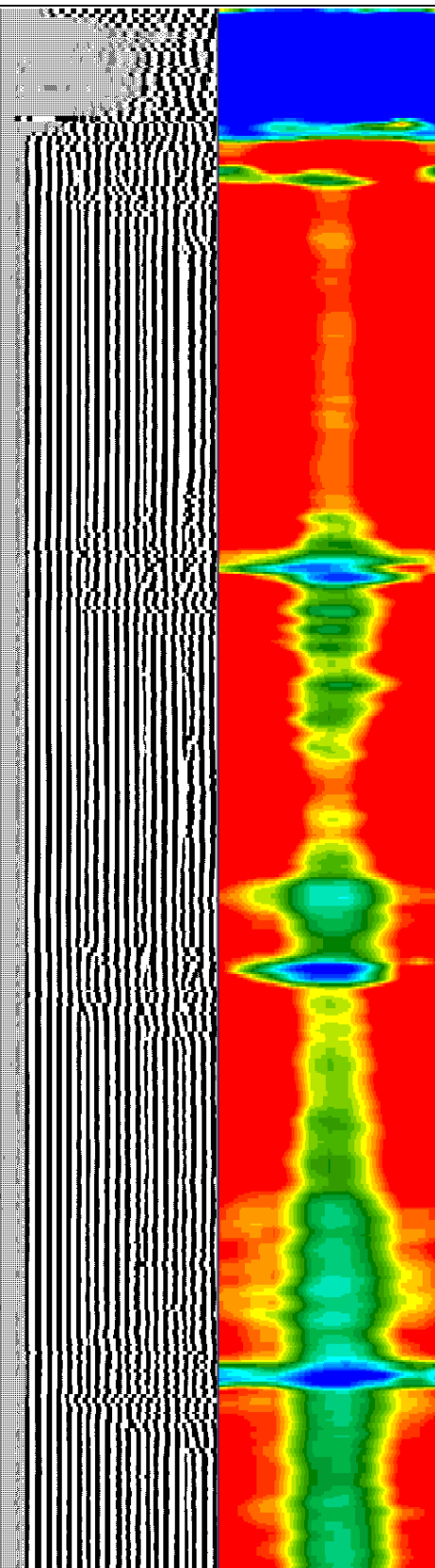
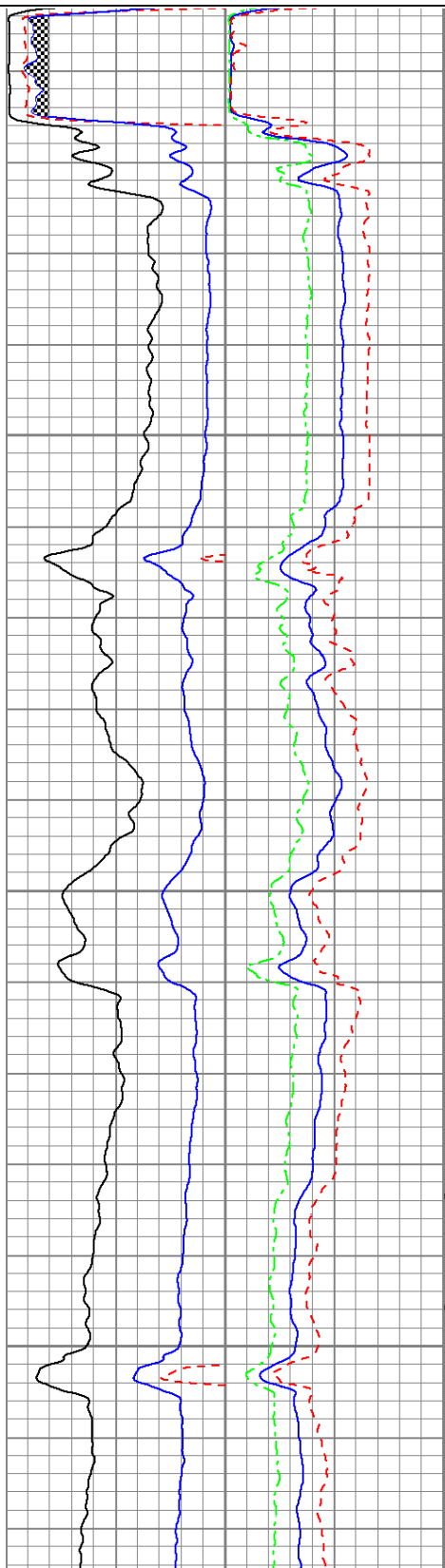
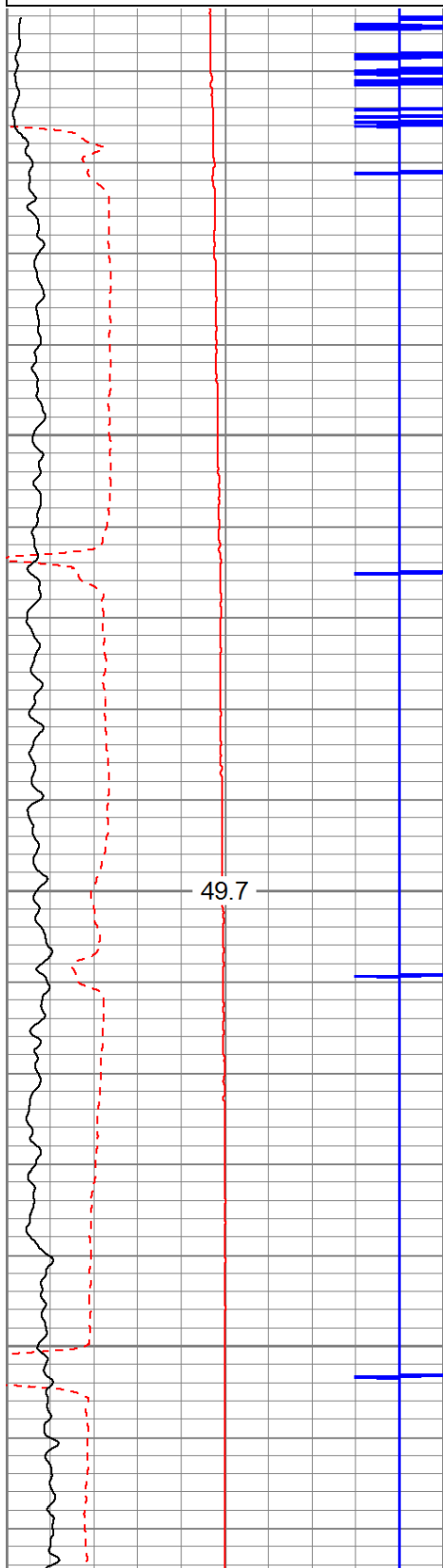
225	Travel Time (usec)	125
9	Casing Collars	-1
0	Gamma Ray	180
0	TEMP (degF)	100

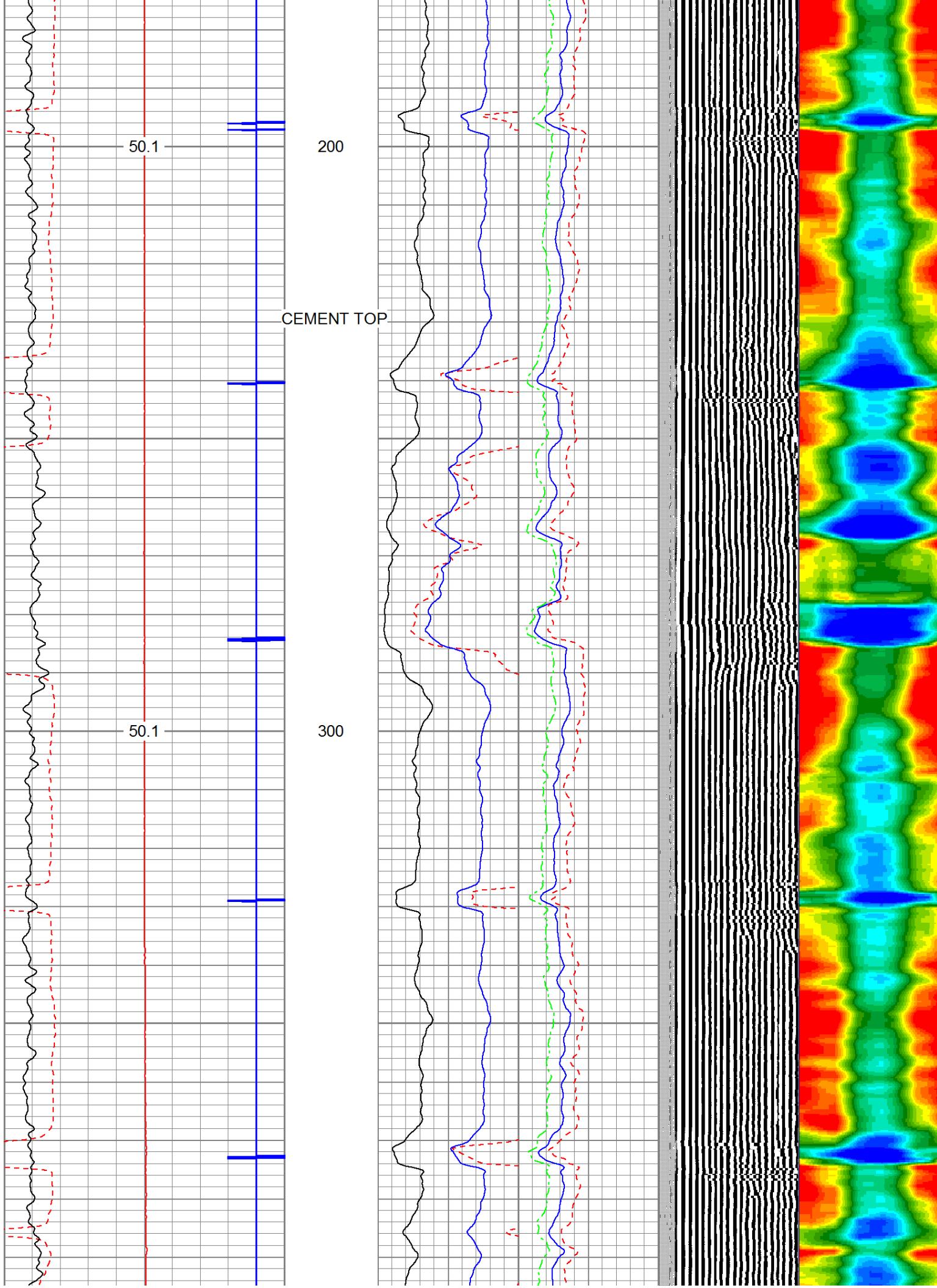
Amplitude	0	Amp Avg	150
(mV)	100	Amp Max	150
AmpX5 (mV)	20	Amp Min	150
BONDIX	0		

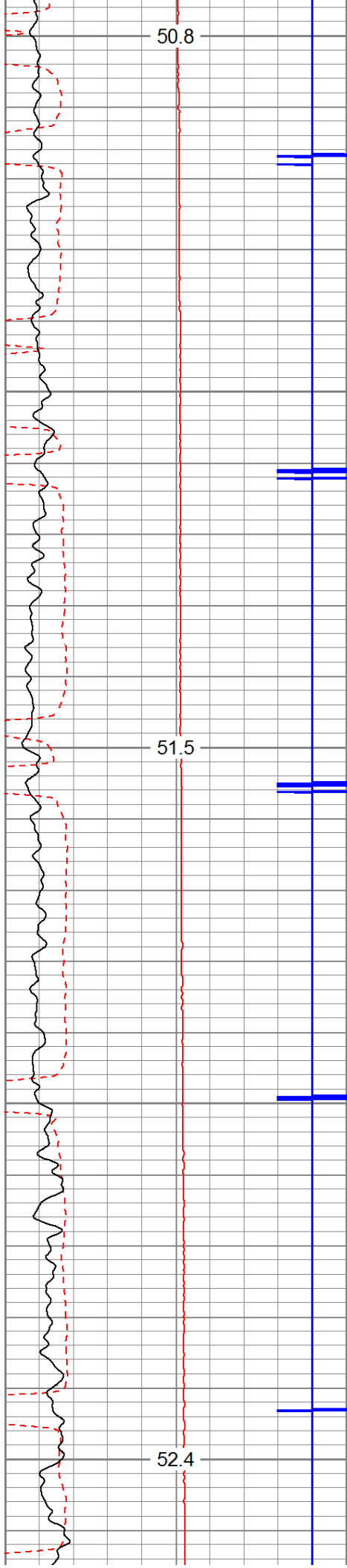
200 VDL 1200 1 Sector Map 12
 20 60



TEMP (degF)







400

500

600

