



**RADIAL CEMENT BOND
GAMMA RAY/CCL/VDL**

Company ANTERO RESOURCES CORPORATION
 Well SPOCK UNIT 3H
 Field MARCELLUS
 County TYLER
 State W.V.

Company ANTERO RESOURCES CORPORATION
 Well SPOCK UNIT 3H
 Field MARCELLUS
 County TYLER State W.V.

Location: API #: 47095024280000

Other Services

Permanent Datum	SEC	TWP	RGE	Elevation	N/A	K.B. N/A
Log Measured From						D.F. N/A
Drilling Measured From						G.L. N/A

Date	2/3/19						
Run Number	ONE						
Depth Driller	17699'						
Depth Logger	7202'						
Bottom Logged Interval	7202'						
Top Log Interval	SURFACE						
Open Hole Size	8.5"						
Type Fluid	H2O						
Density / Viscosity	N/A						
Max. Recorded Temp.	142 DEG						
Estimated Cement Top	858'						
Time Well Ready	N/A						
Time Logger on Bottom	N/A						
Equipment Number	340						
Location	BRIDGEPORT.WV						
Recorded By	JBOGGS						
Witnessed By	JAY TEPFER						
Borehole Record			Casing Record				
Run Number	Bit	From	To	Size	Weight	From	To
				5.5	23	0	17699

<<< Fold Here >>>

All interpretations are opinions based on inferences from electrical or other measurements and we cannot and do not guarantee the accuracy or correctness of any interpretation, and we shall not, except in the case of gross or willful negligence on our part, be liable or responsible for any loss, costs, damages, or expenses incurred or sustained by anyone resulting from any interpretation made by any of our officers, agents or employees. These interpretations are also subject to our general terms and conditions set out in our current Price Schedule.

Comments

THANK YOU FOR USING KLX ENERGY SERVICES
 LOG WAS SHIFTED 7' DOWN HOLE TO MATCH CASING TALLY
 TOP OF CEMENT @ 858'
 BOTTOM HOLE TEMP-142 DEG
 MARKER JOINT @ 6047'-6058'



MAIN LOG 1500 PSI

Database File: f:\2019 antero\pyle run\spock3h.db
 Dataset Pathname: pass5.1
 Presentation Format: antero
 Dataset Creation: Sun Feb 03 21:48:45 2019 by Calc 7.0 B1
 Charted by: Depth in Feet scaled 1:240

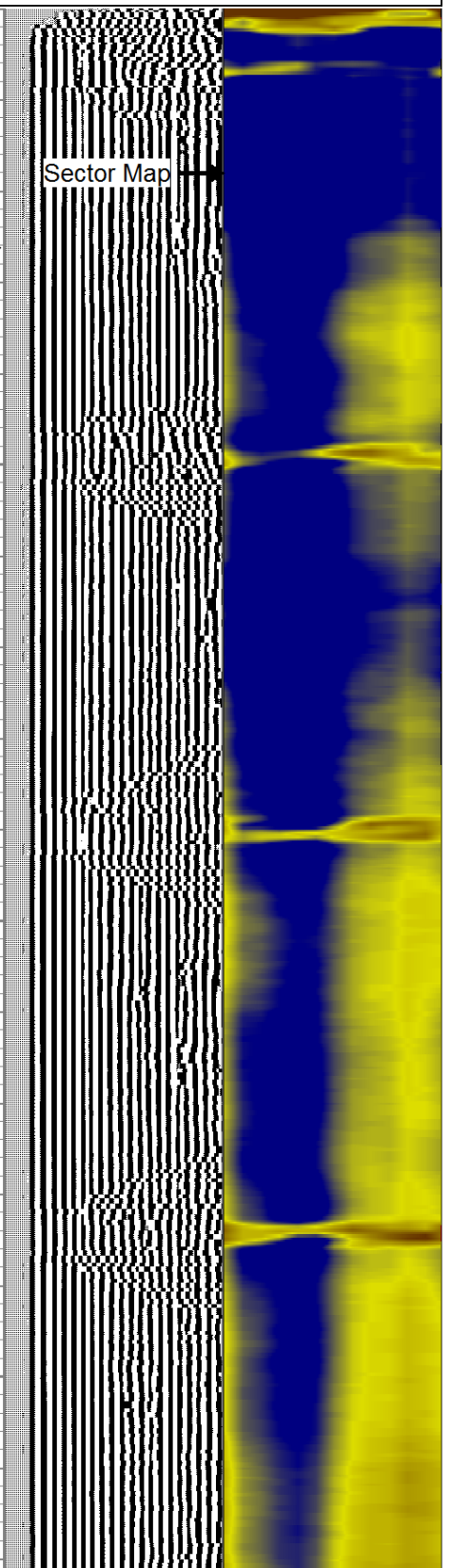
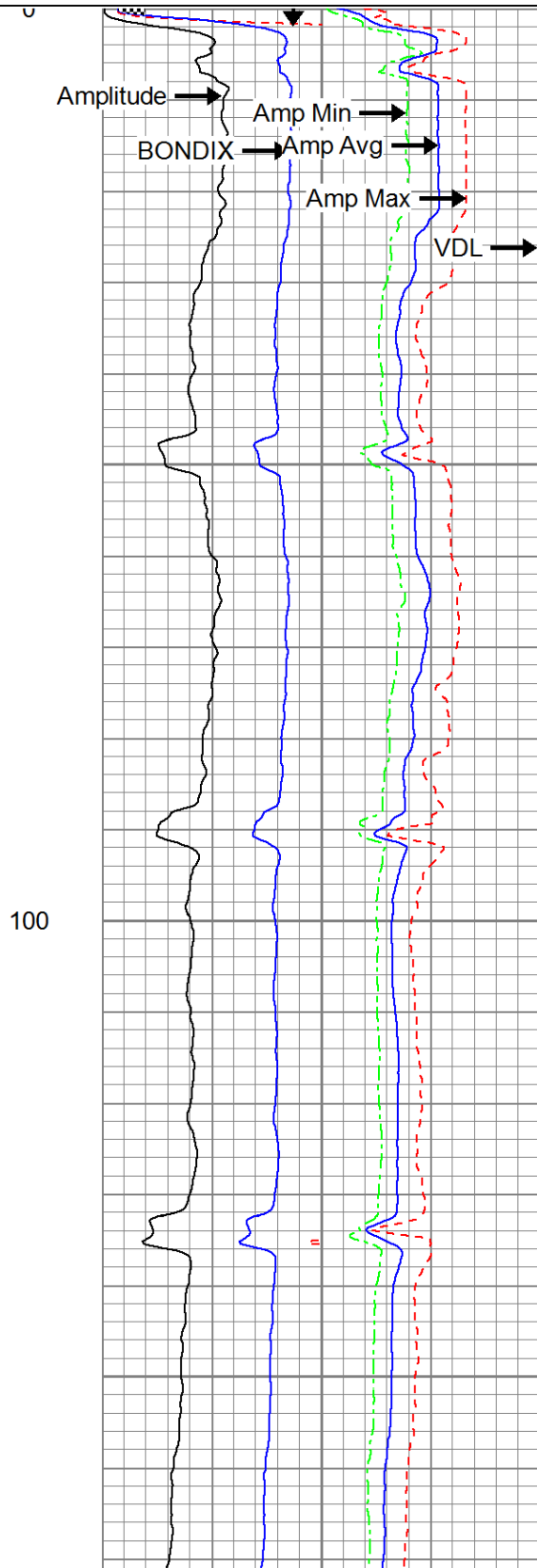
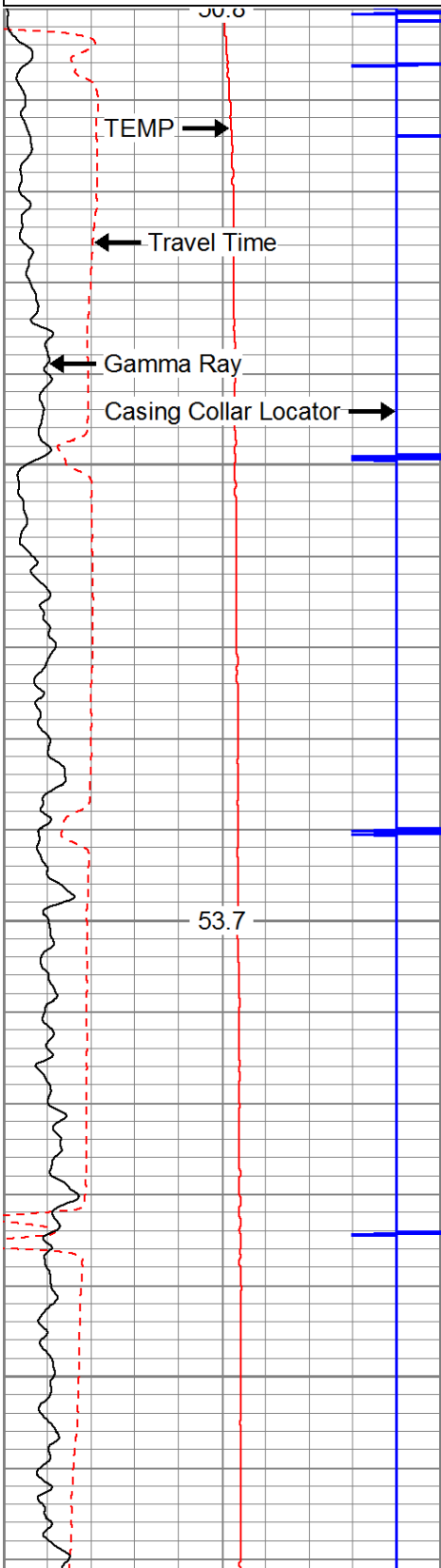
225	Travel Time (usec)	125
9	Casing Collars	-1
0	Gamma Ray	180
0	TEMP (degF)	100

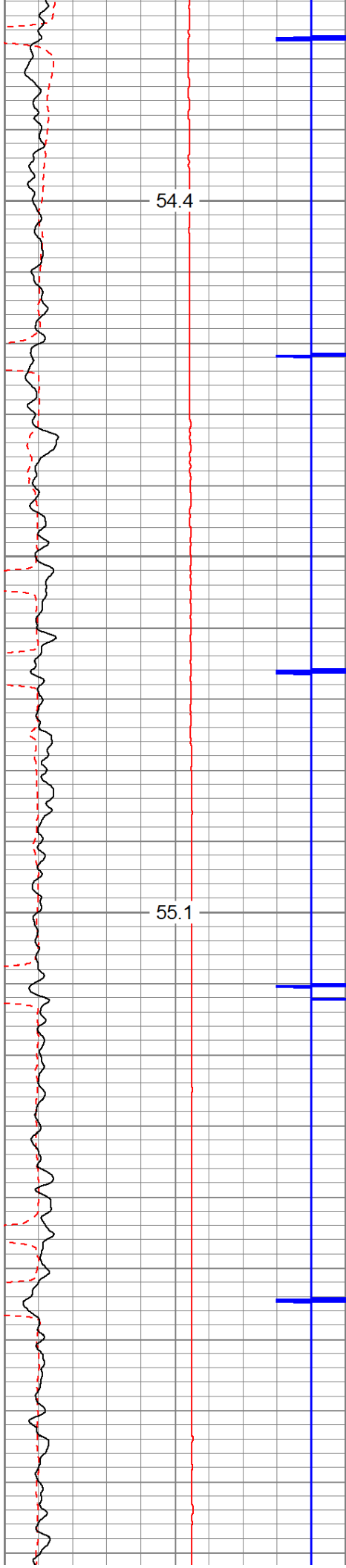
Amplitude	0	Amp Avg	150	200	VDL	1200
(mV)	100	Amp Max	150			
AmpX5 (mV)	20	Amp Min	150			
BONDIX	0					

1	Sector Map	12
20		60



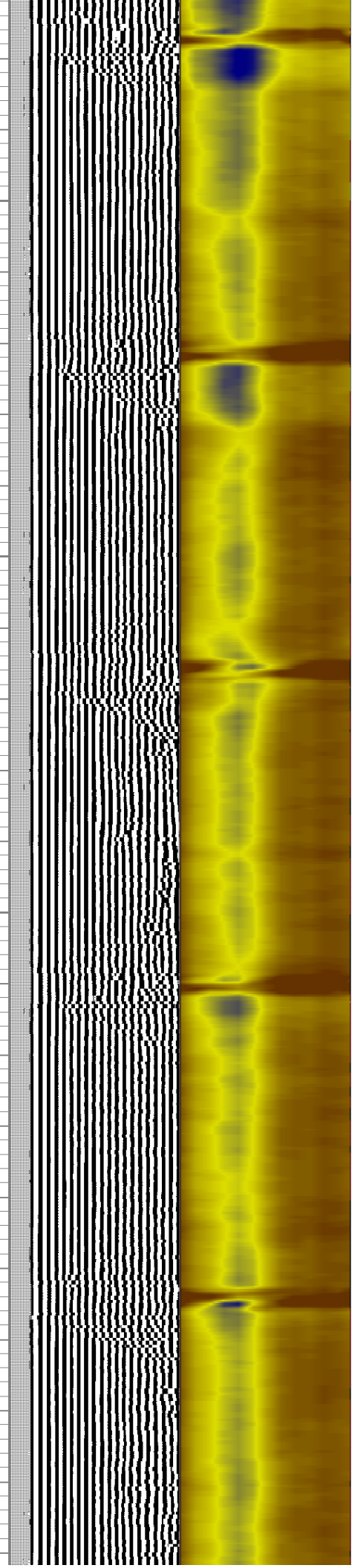
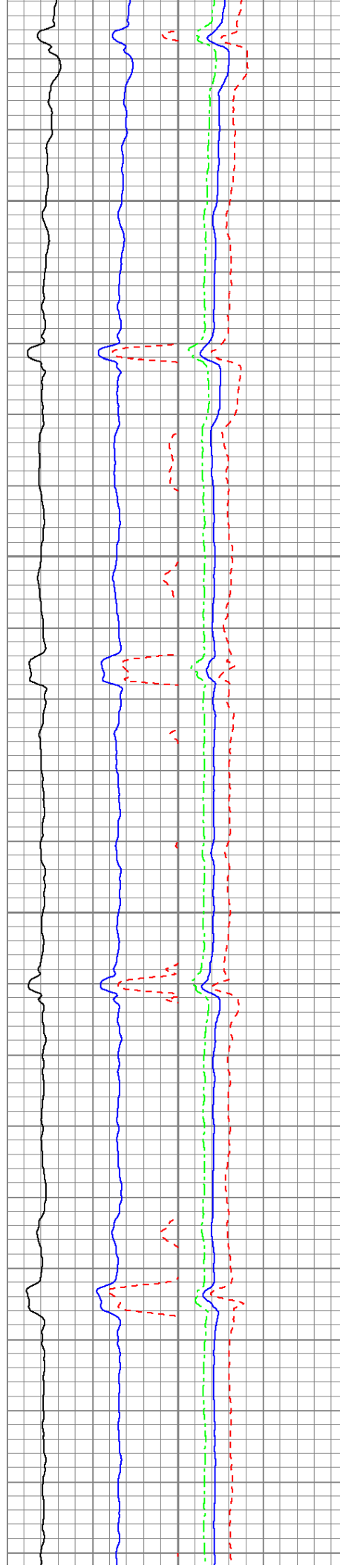
TEMP (degF)

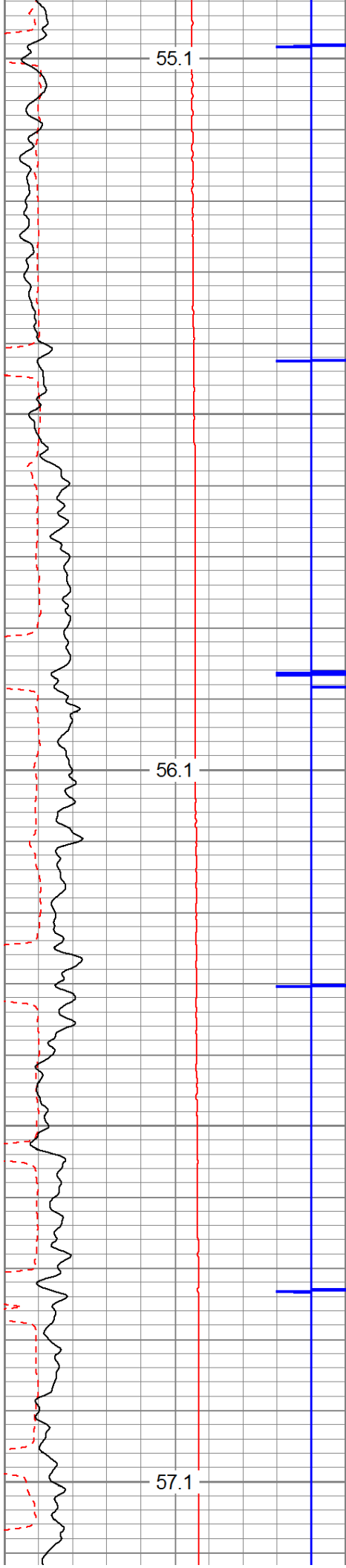




200

300

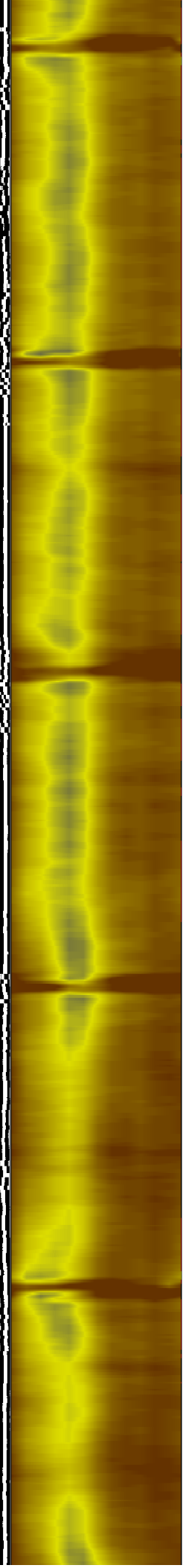
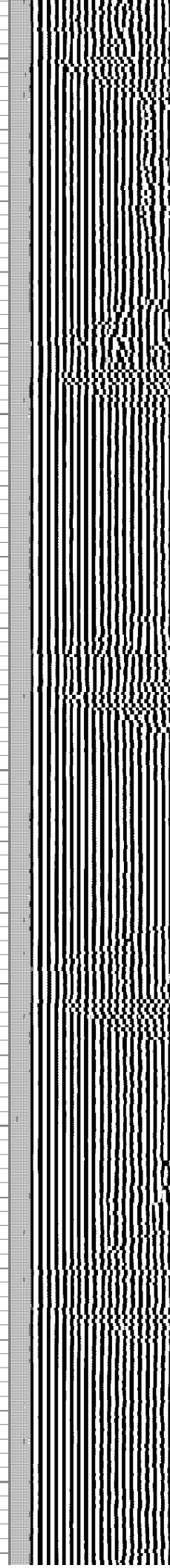
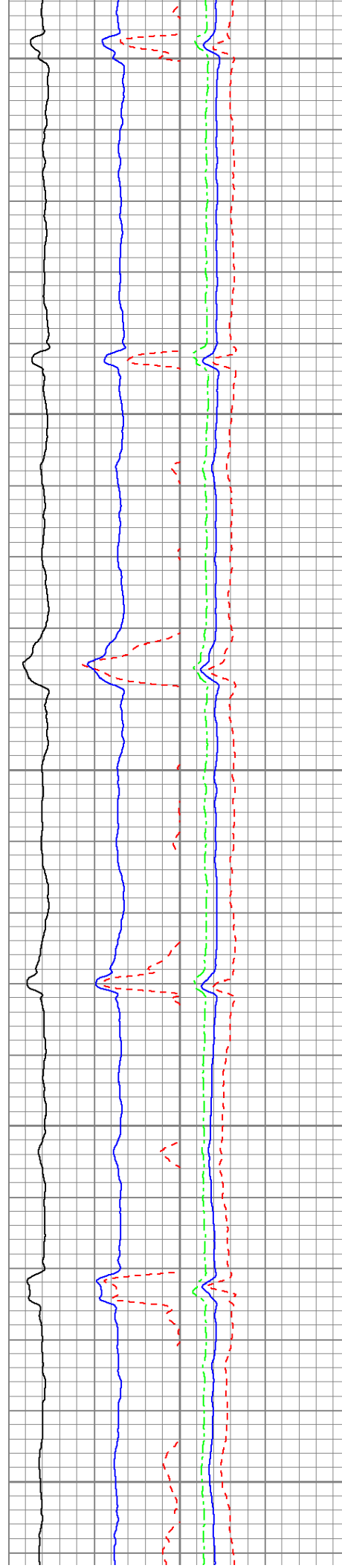


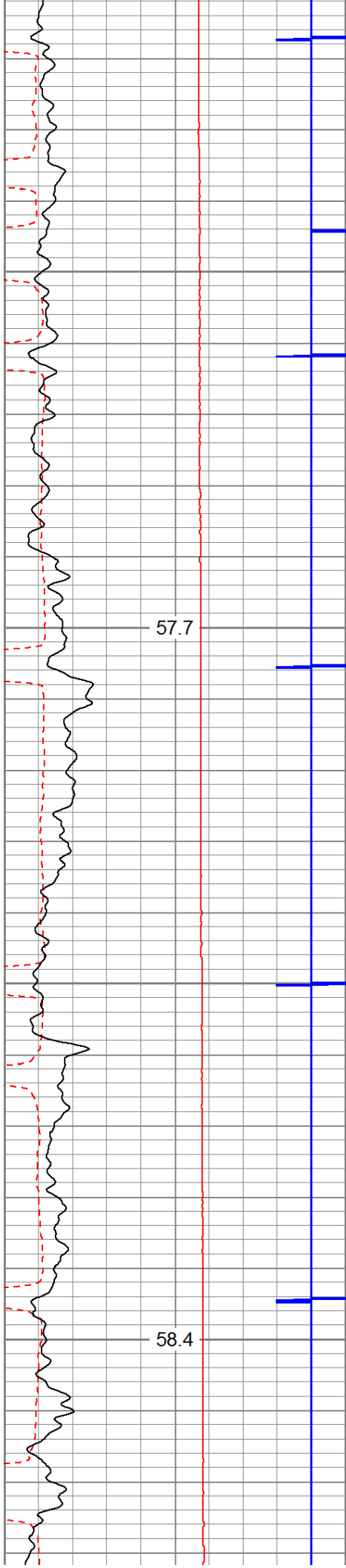


400

500

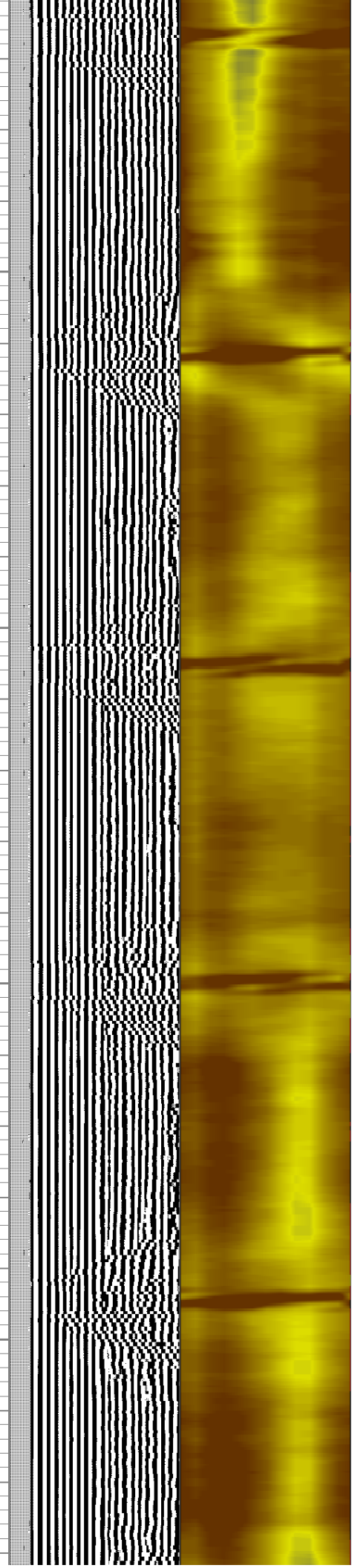
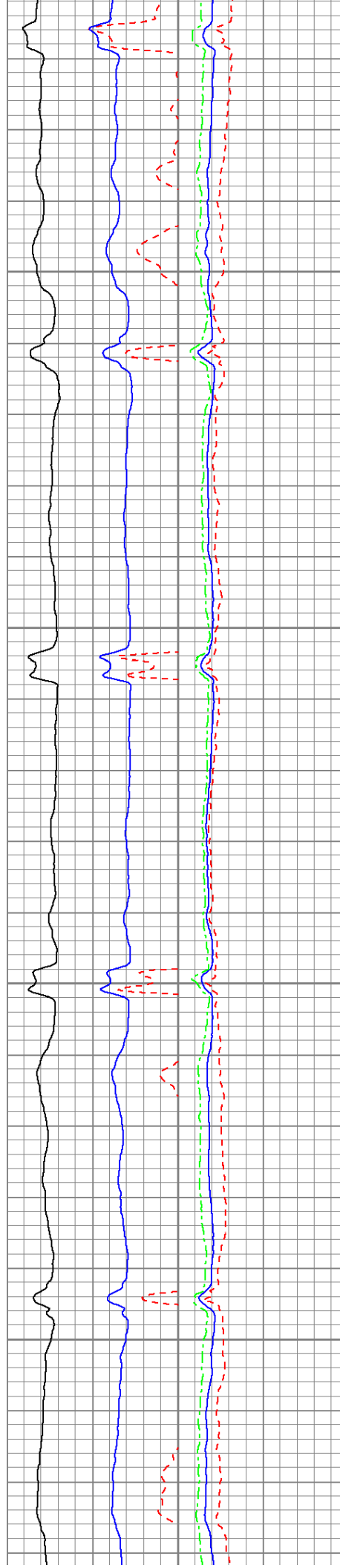
600

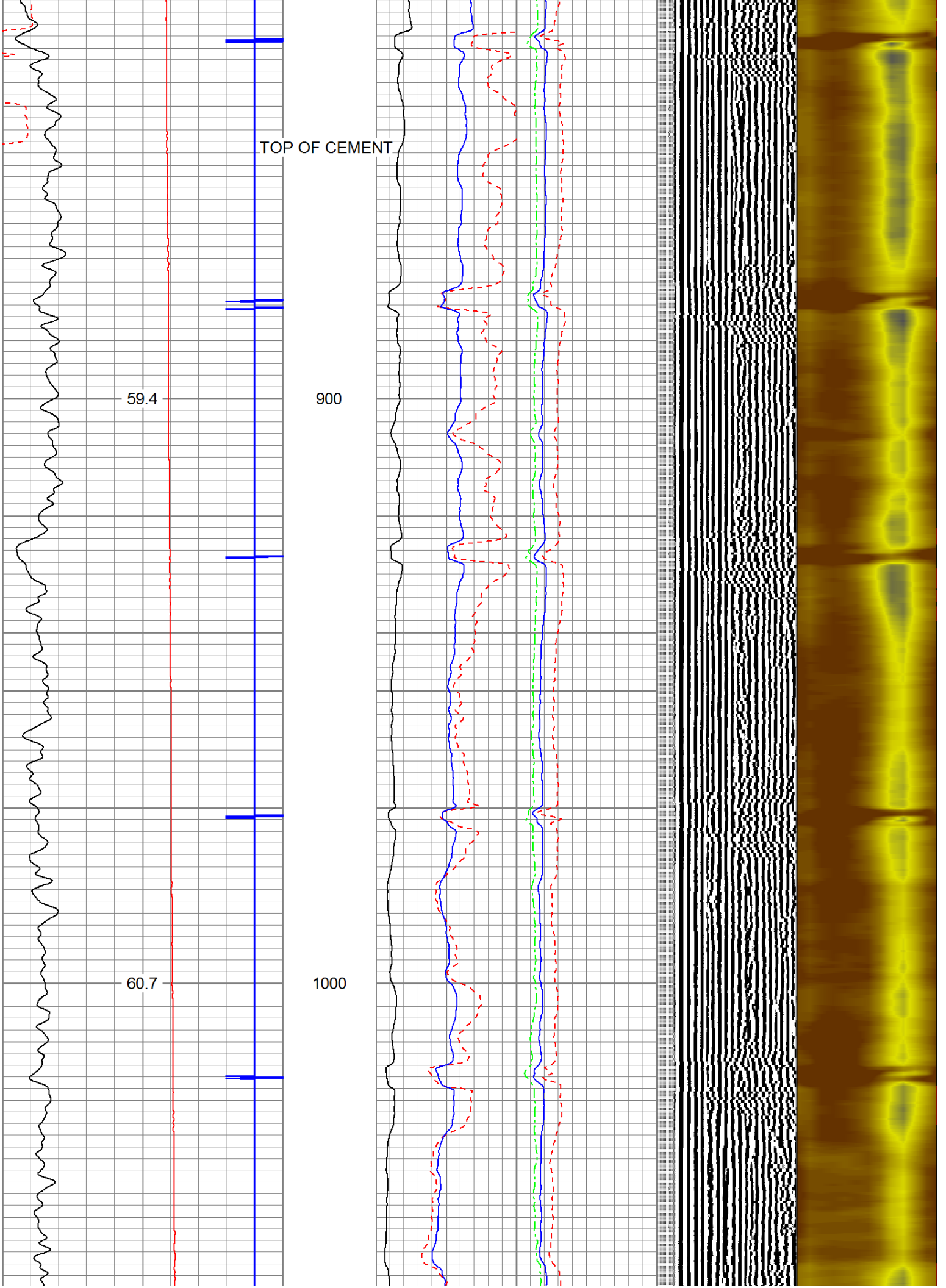


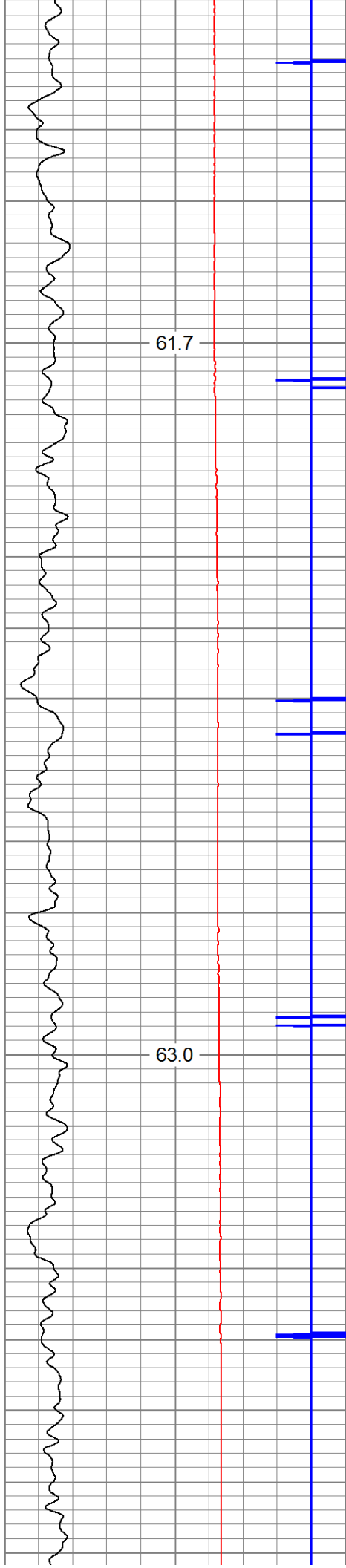


700

800

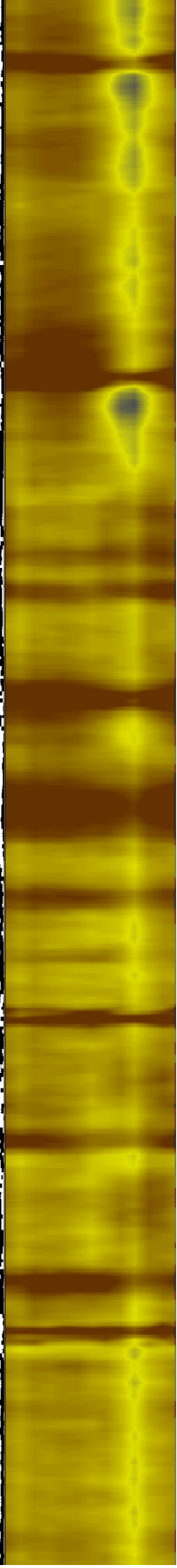
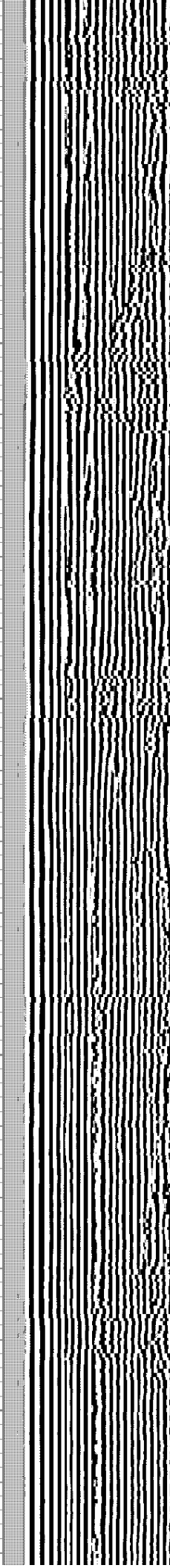
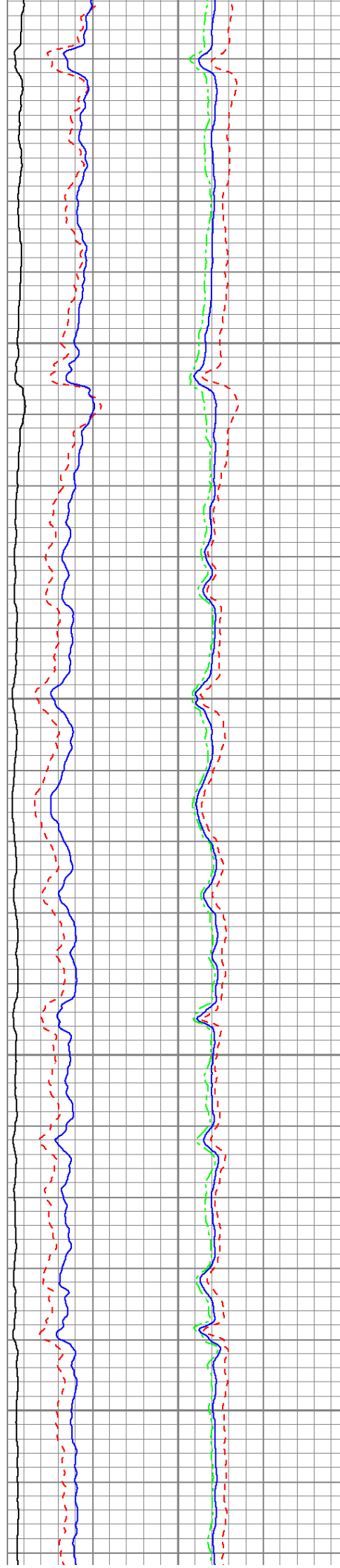


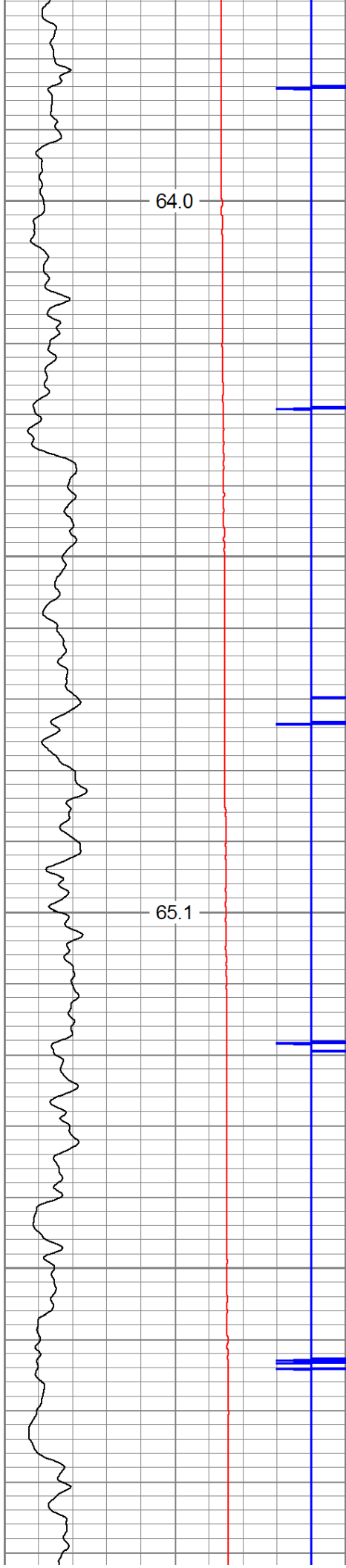




1100

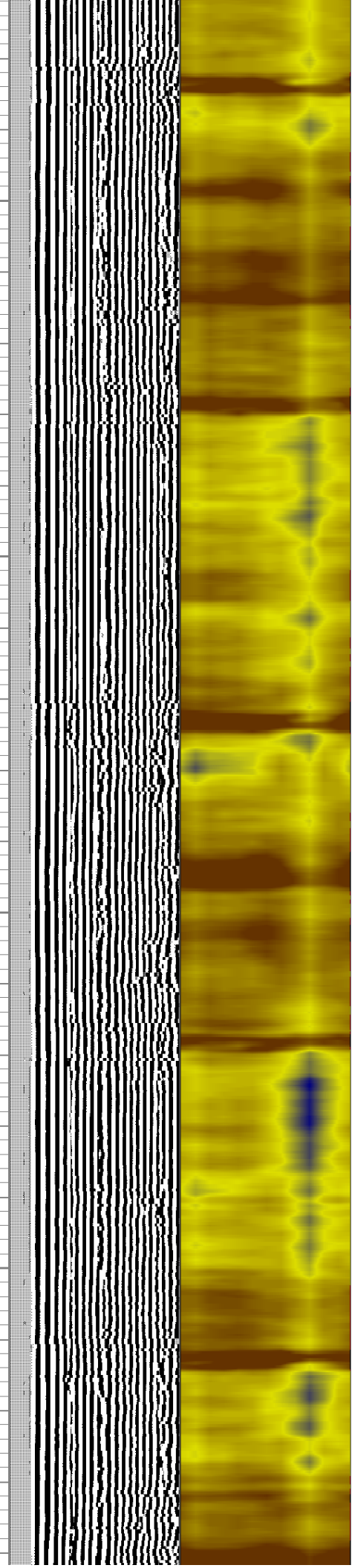
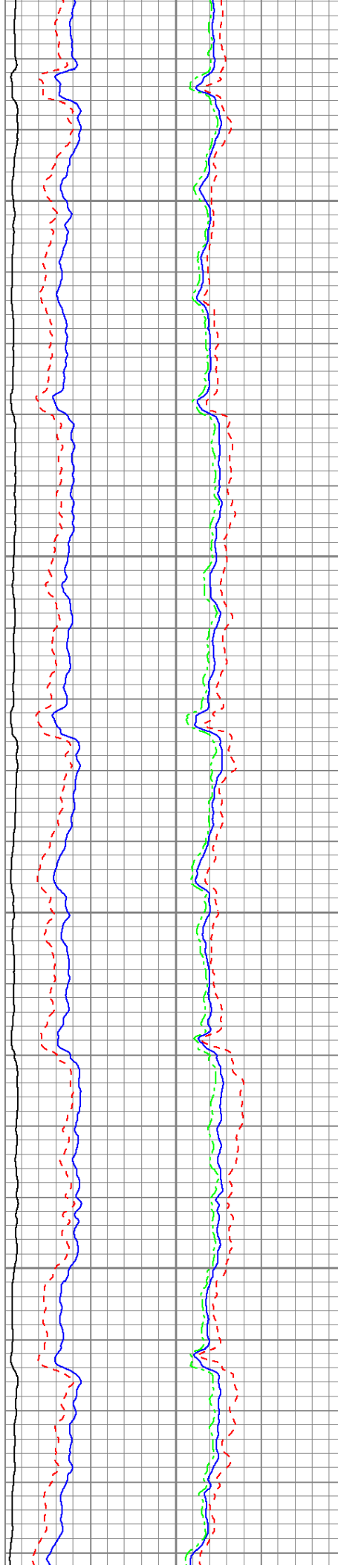
1200

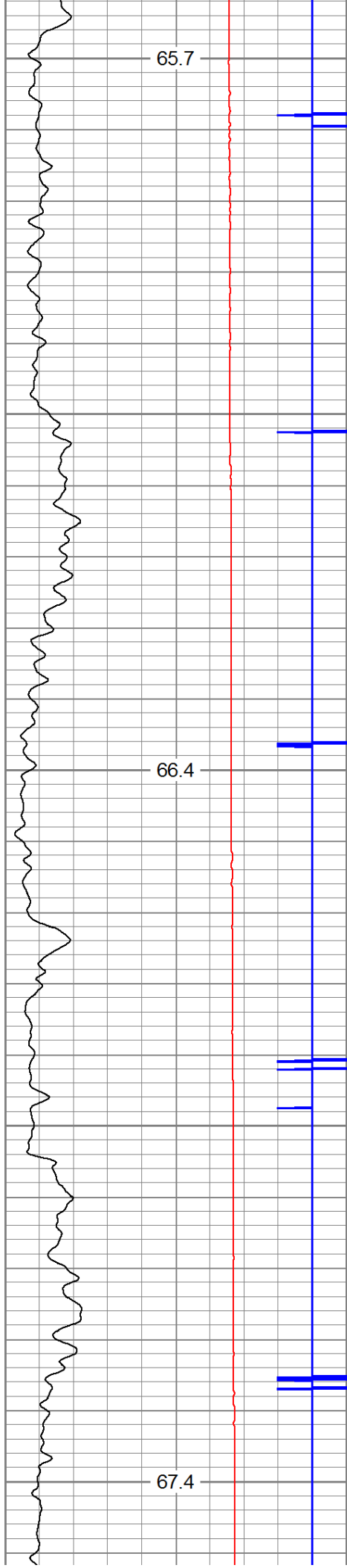




1300

1400





65.7

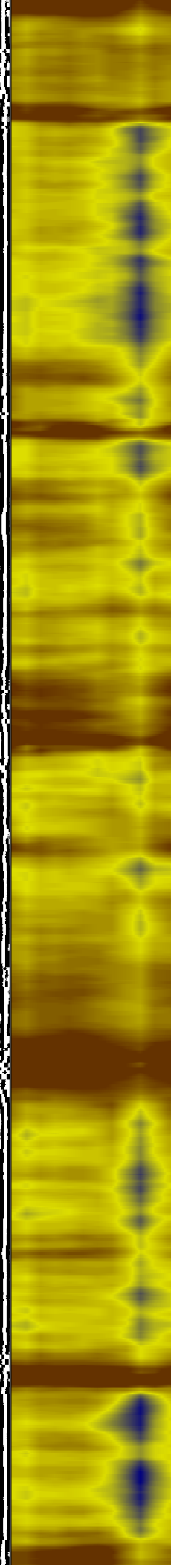
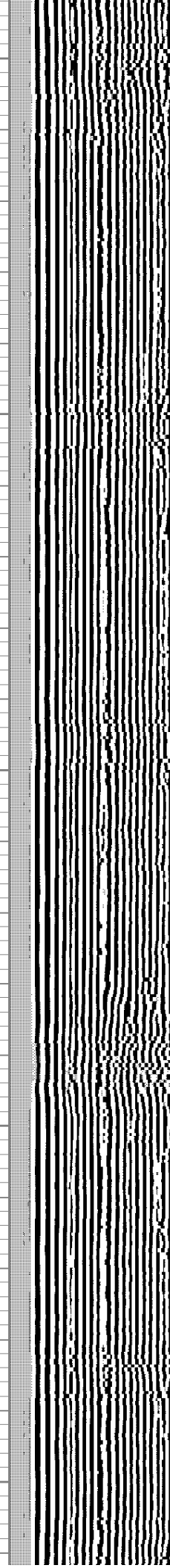
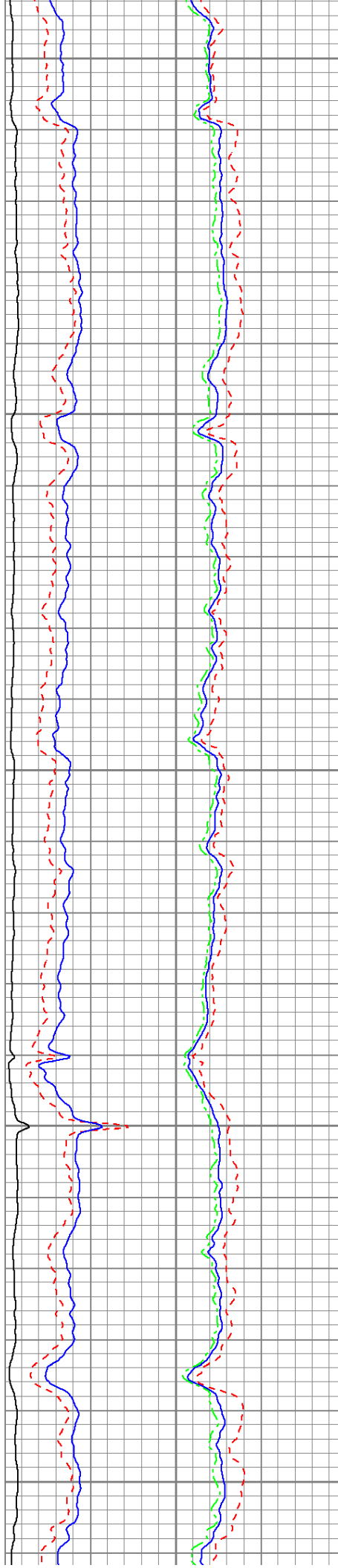
66.4

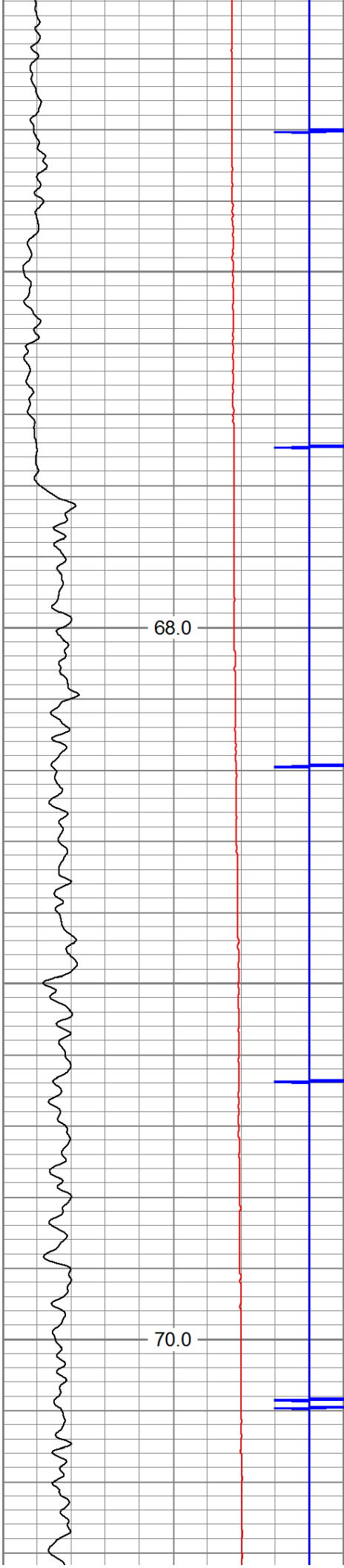
67.4

1500

1600

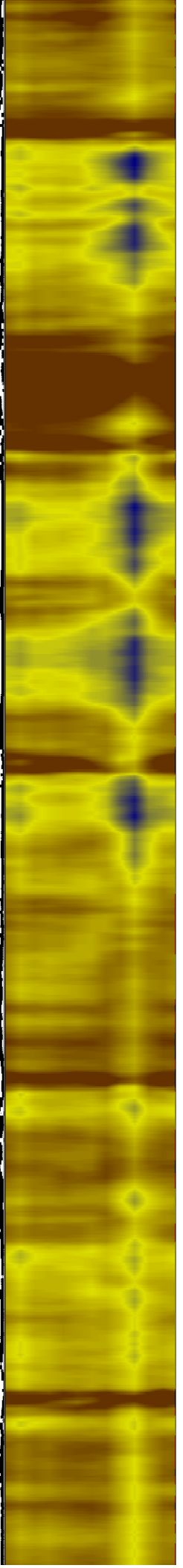
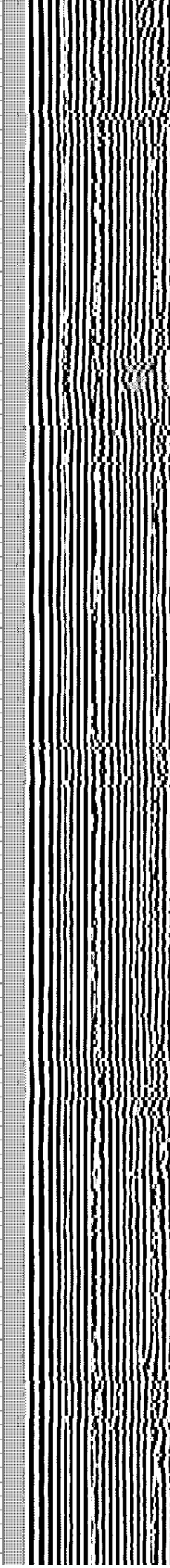
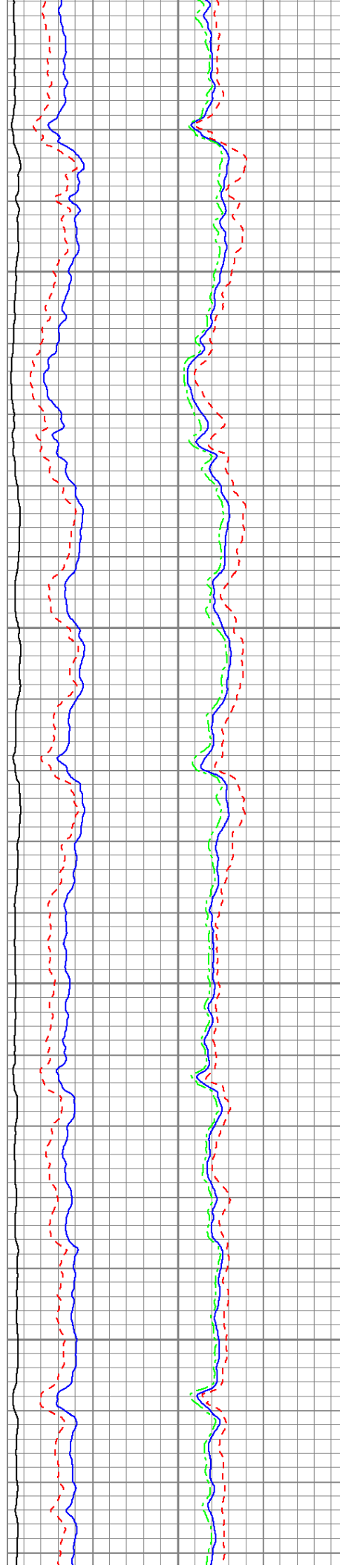
1700

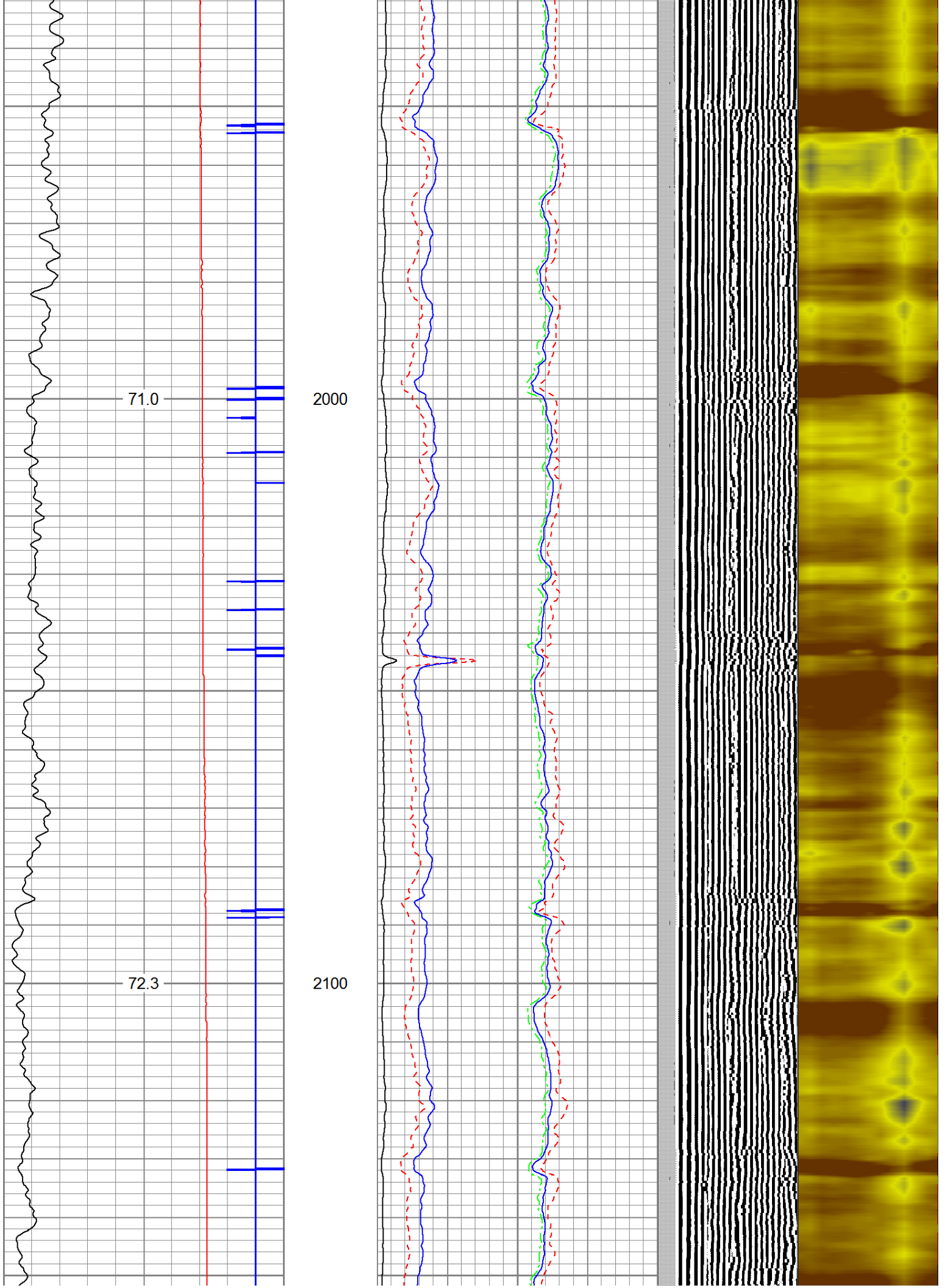


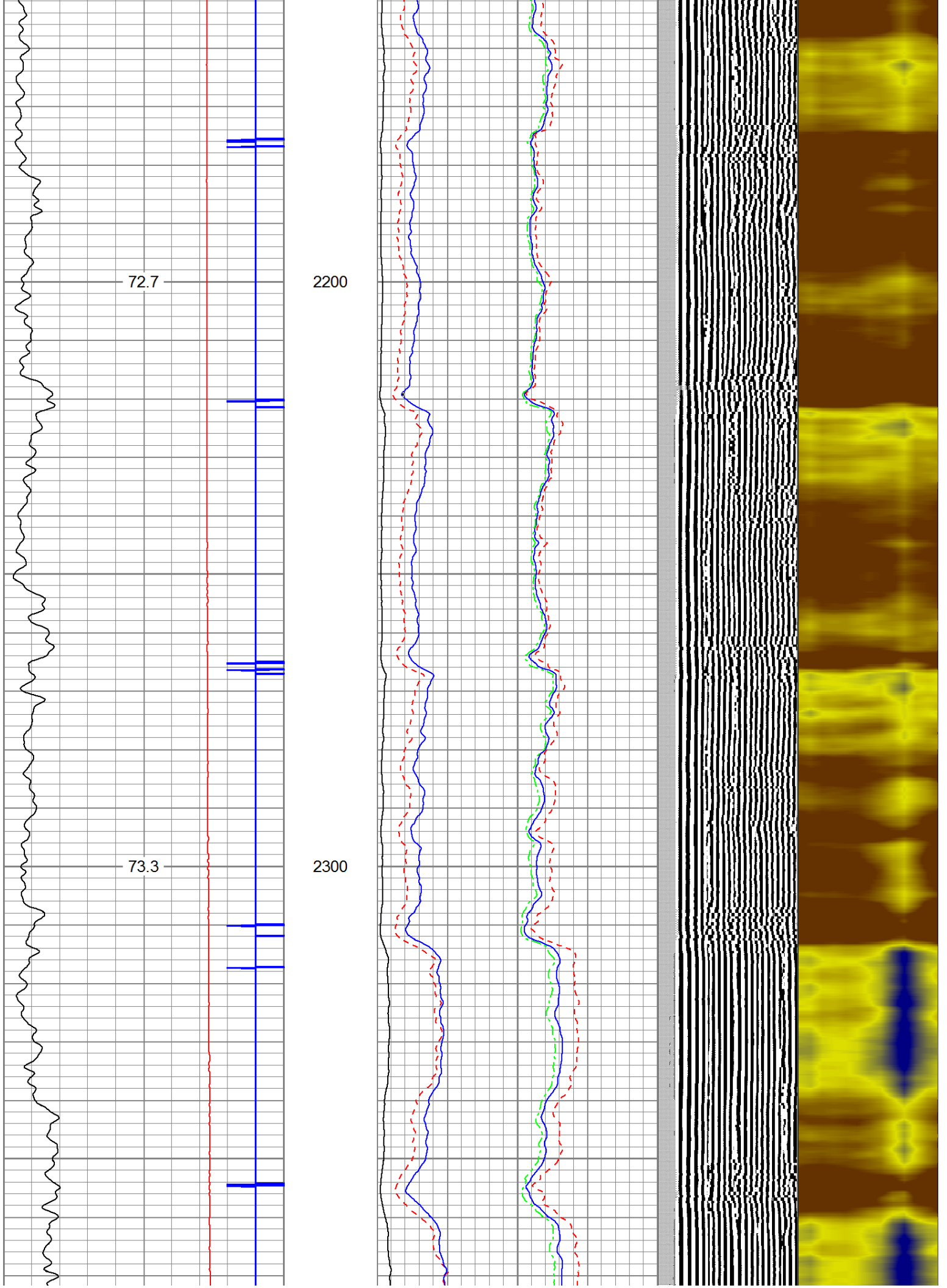


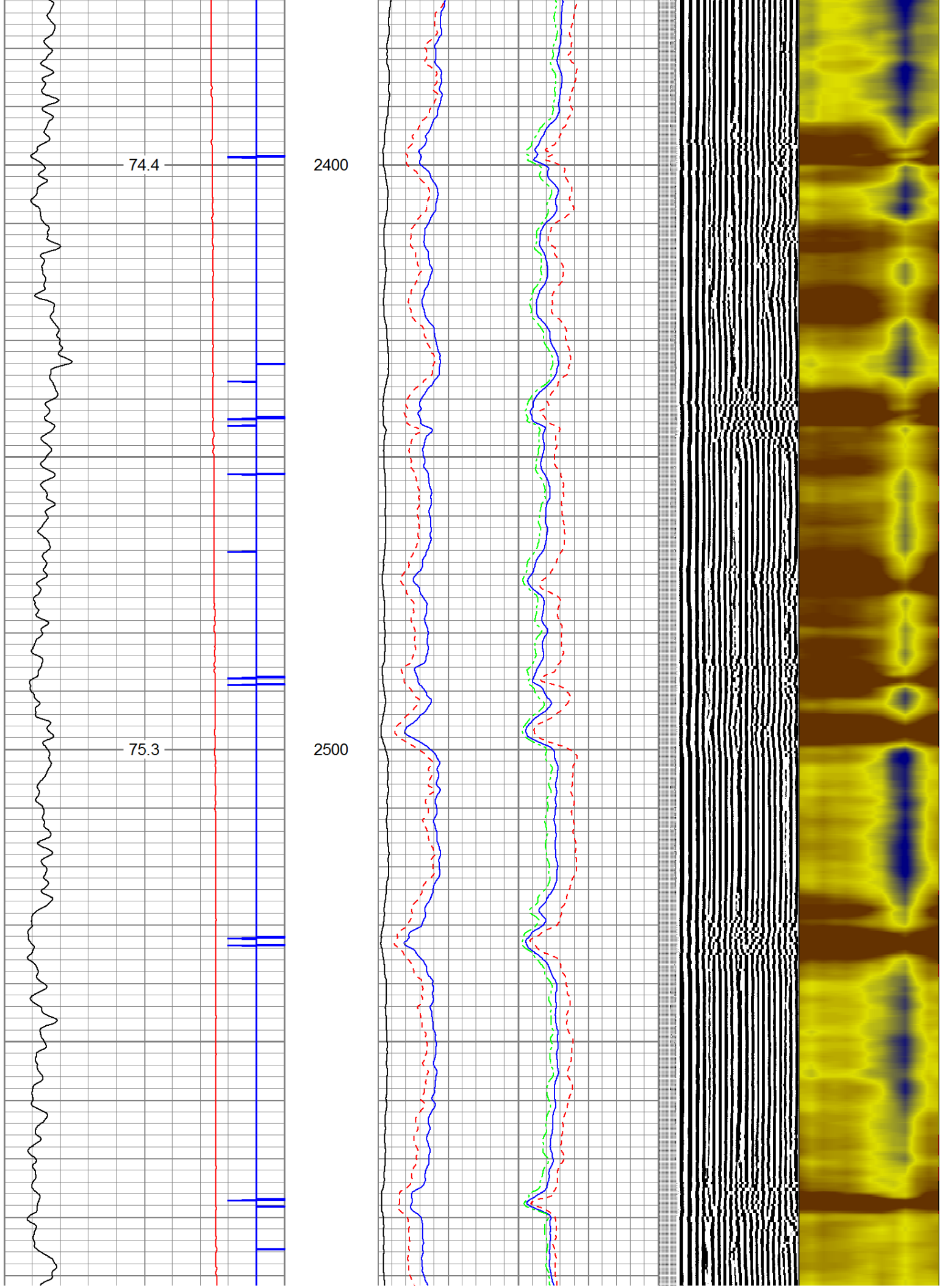
1800

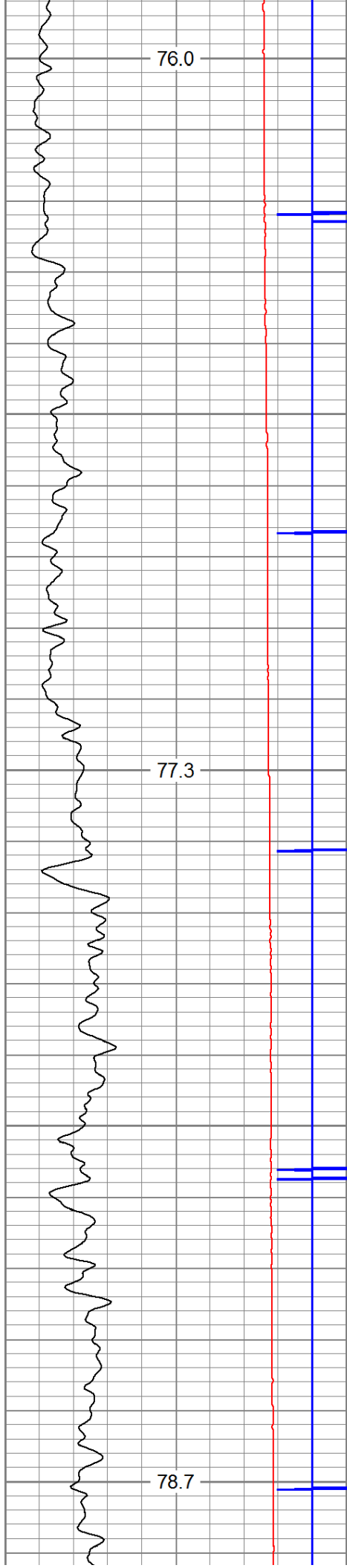
1900







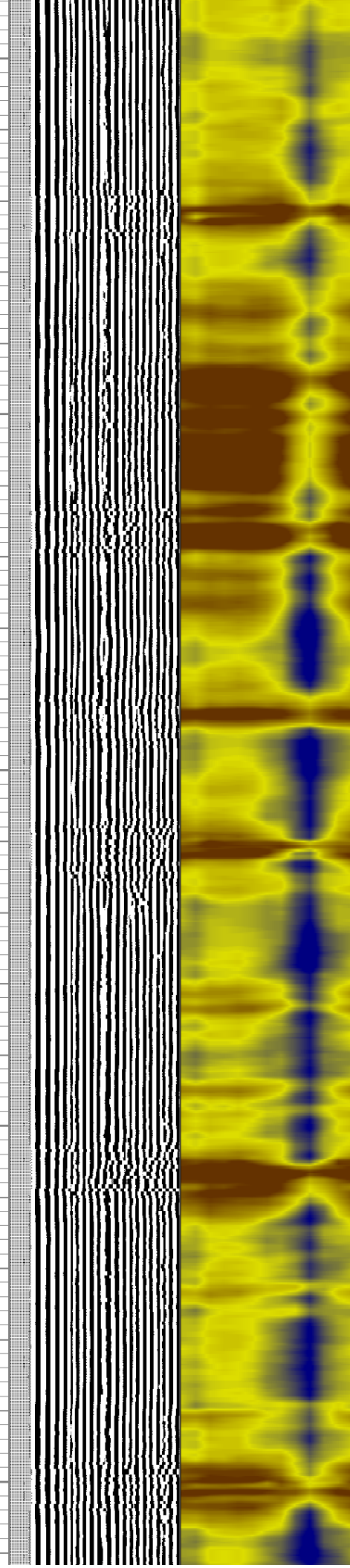
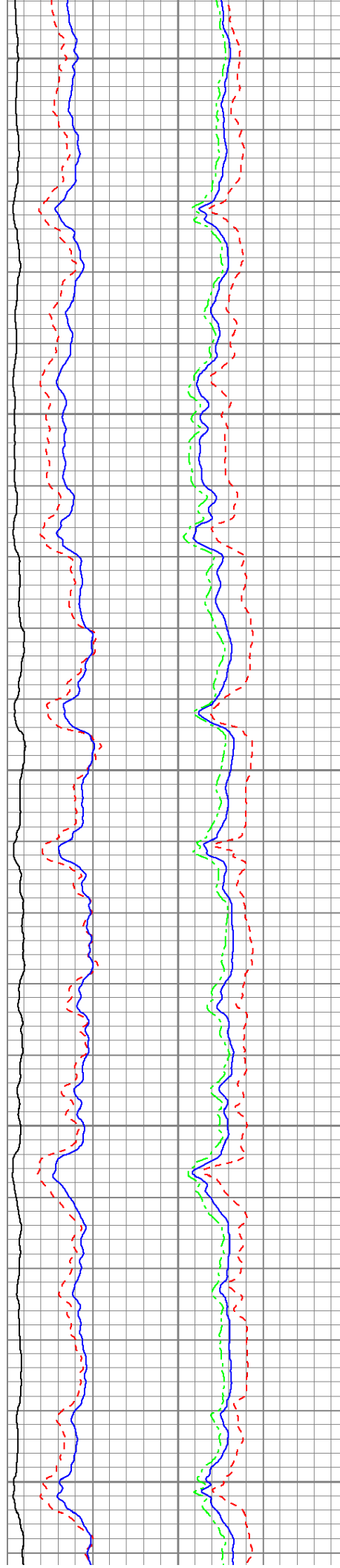


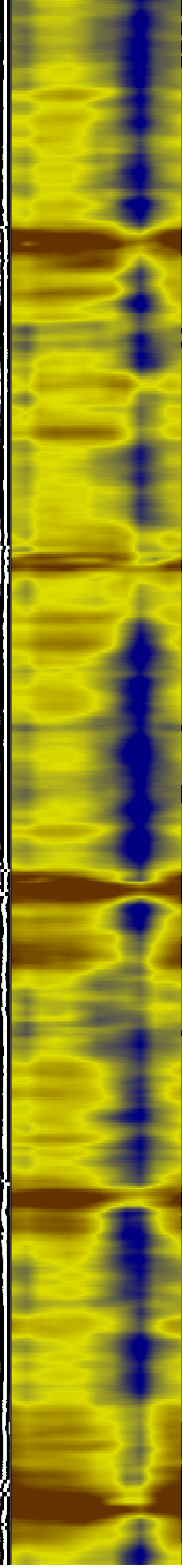
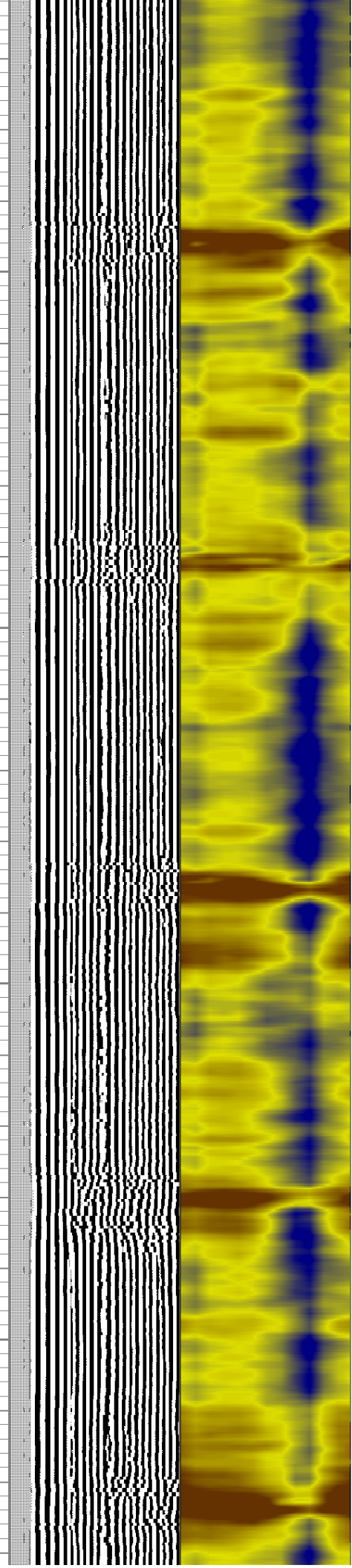
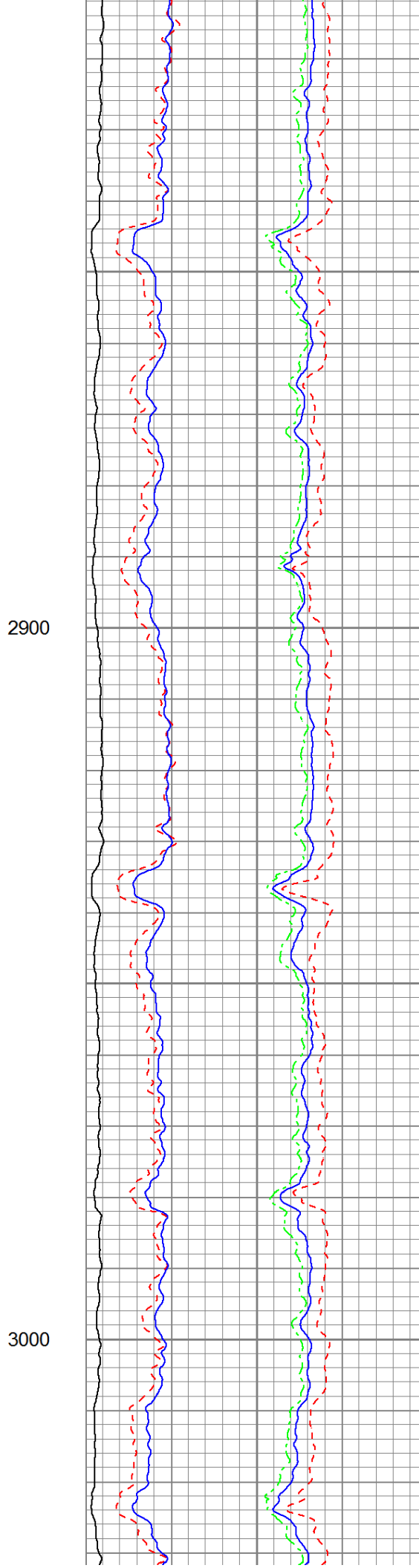
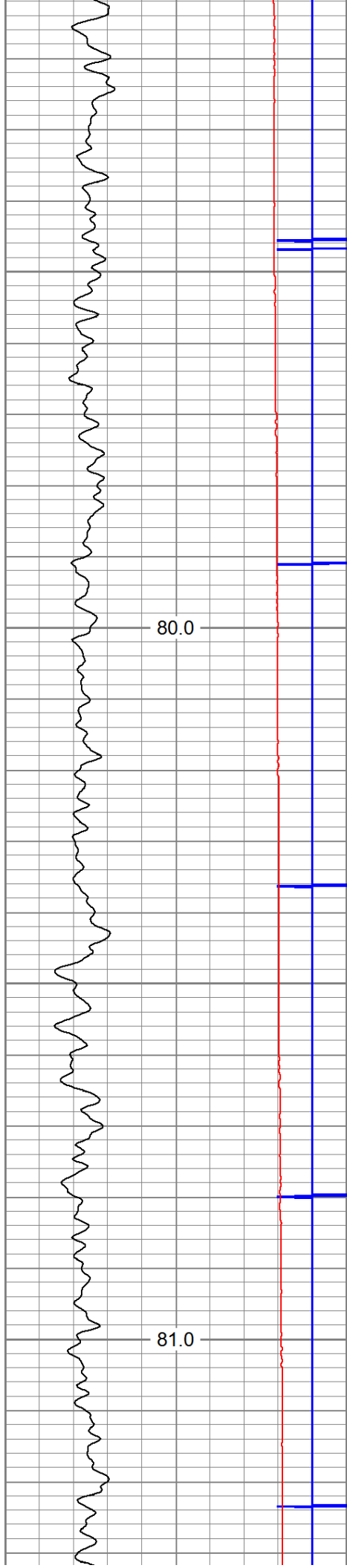


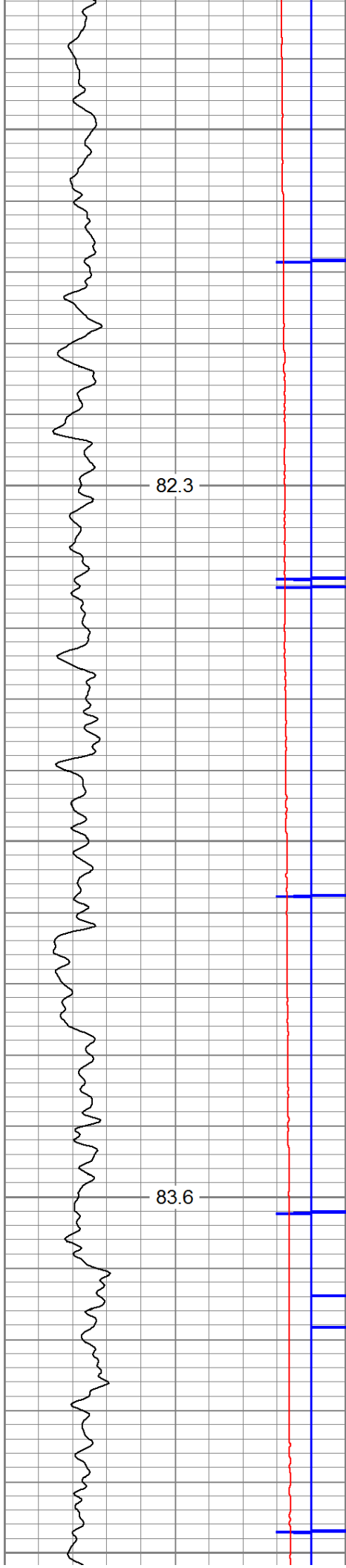
2600

2700

2800







3100

3200

