



**RADIAL CEMENT BOND
GAMMA RAY/CCL/VDL**

Company ANTERO RESOURCES CORPORATION
 Well ORVIS UNIT 2H
 Field MARCELLUS
 County TYLER
 State W.V.

Company ANTERO RESOURCES CORPORATION
 Well ORVIS UNIT 2H
 Field MARCELLUS
 County TYLER State W.V.

Location: API #: 47095025320000 Other Services

SEC	TWP	RGE	Elevation	N/A	Elevation
Permanent Datum	G.L.		K.B. N/A		
Log Measured From	K.B.		D.F. N/A		
Drilling Measured From	K.B. OF 25'		G.L. N/A		

Date	3/31/19
Run Number	ONE
Depth Driller	17092'
Depth Logger	6923'
Bottom Logged Interval	6923'
Top Log Interval	SURFACE
Open Hole Size	N/A
Type Fluid	H2O
Density / Viscosity	N/A
Max. Recorded Temp.	141 DEG
Estimated Cement Top	110'
Time Well Ready	N/A
Time Logger on Bottom	14.40
Equipment Number	340
Location	BRIDGEPORT, WV
Recorded By	JBOGGS
Witnessed By	MR. BOB REED

Borehole Record				Casing Record			
Run Number	Bit	From	To	Size	Weight	From	To
				20"	94LB	SURFACE	120'
				13 3/8"	54.5LB	SURFACE	394'
				9 5/8"	36LB	SURFACE	2721'
				5 1/2"	23LB	SURFACE	17092'

<<< Fold Here >>>

All interpretations are opinions based on inferences from electrical or other measurements and we cannot and do not guarantee the accuracy or correctness of any interpretation, and we shall not, except in the case of gross or willful negligence on our part, be liable or responsible for any loss, costs, damages, or expenses incurred or sustained by anyone resulting from any interpretation made by any of our officers, agents or employees. These interpretations are also subject to our general terms and conditions set out in our current Price Schedule.

Comments

THANK YOU FOR USING KLX ENERGY SERVICES
 LOG WAS RAN ON 5 1/2" CASING WITH 1500PSI ON CASING
 TOP OF CEMENT- 110'
 BOTTOM HOLE TEMP- 141 DEG
 MARKER JOINT ON LOG @ 5666'-5676'
 CORRECTED UP HOLE 12' TO PUT MARKER ON DEPTH WITH PIPE TALLY

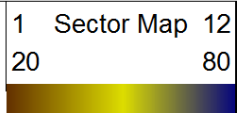


Main Log @ 1500 PSI

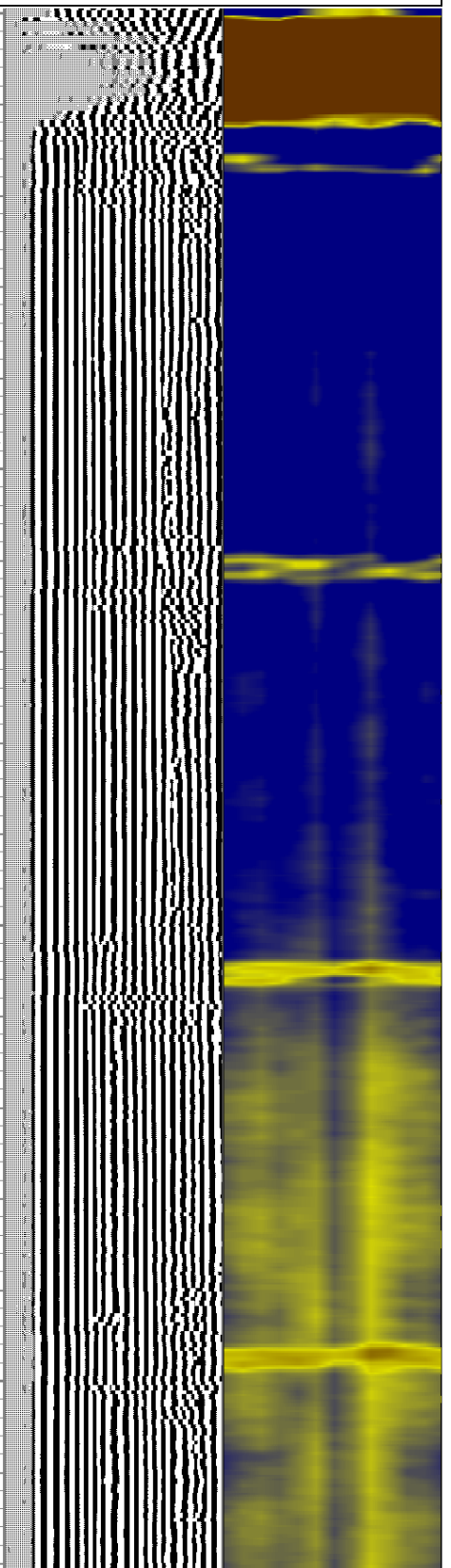
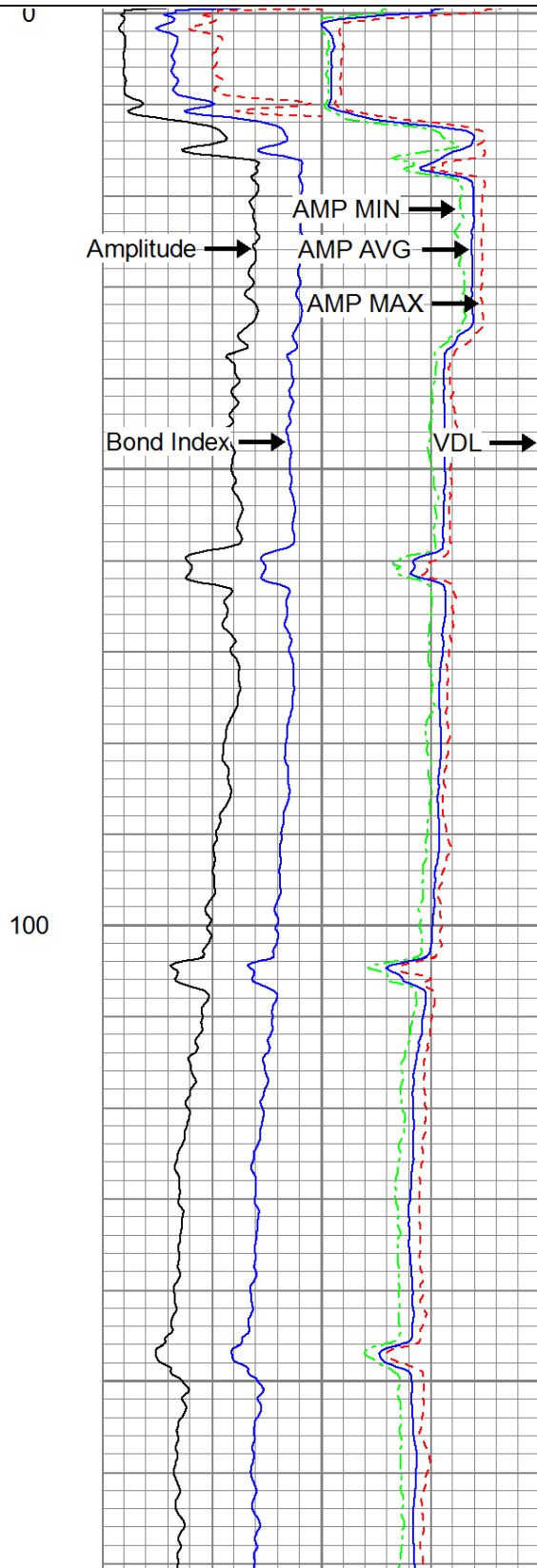
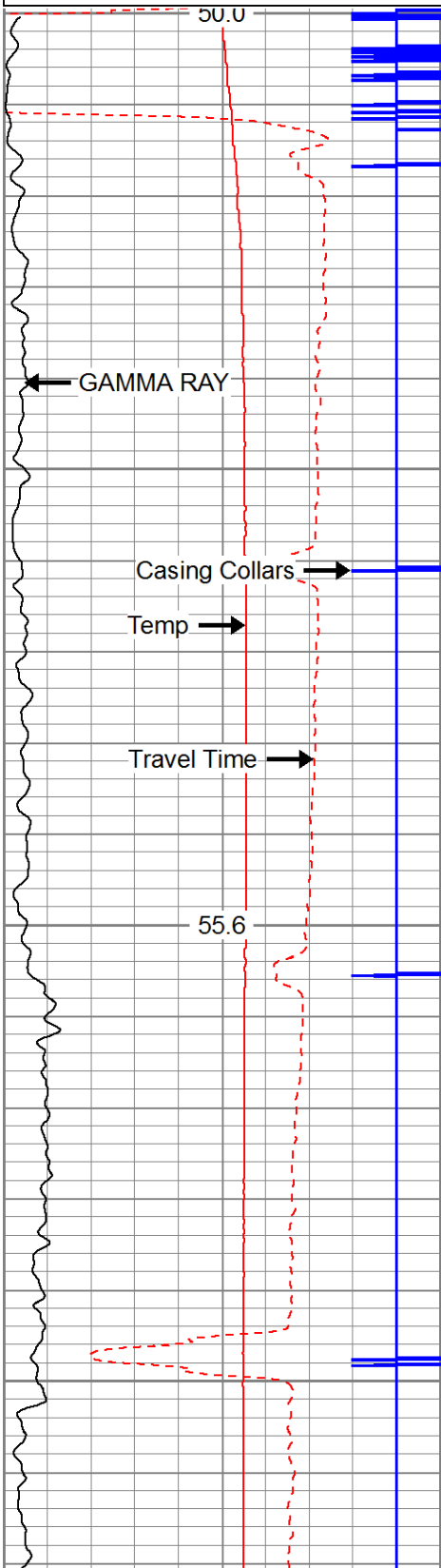
Database File: c:\warrior\data\2019 antero\antero-orvis unit 2h.db
 Dataset Pathname: pass3.1
 Presentation Format: antero f
 Dataset Creation: Mon Apr 01 08:08:00 2019 by Calc Std Casedhole 10081
 Charted by: Depth in Feet scaled 1:240

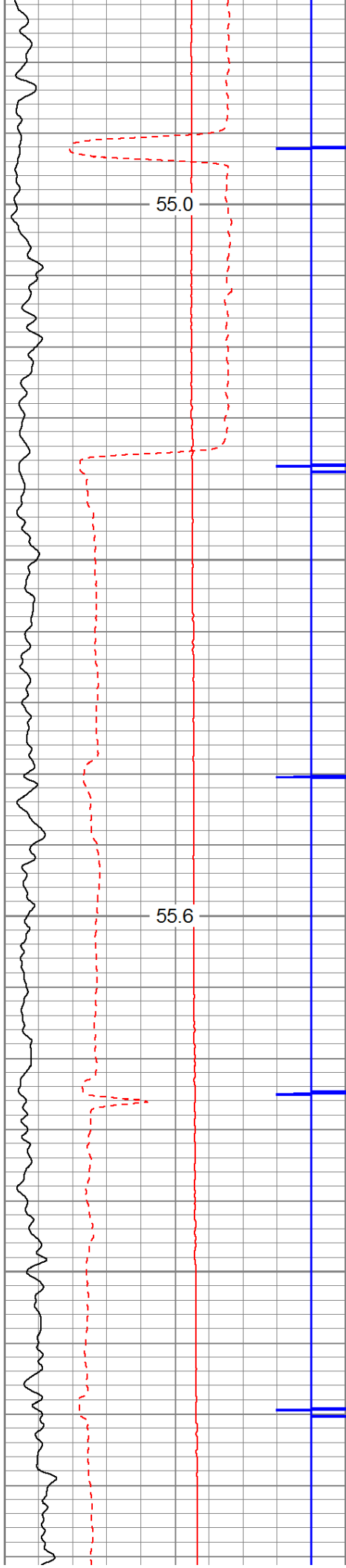
280	Travel Time (usec)	180
9	Casing Collars	-1
0	Gamma Ray	180
0	TEMP (degF)	100

Amplitude	0	Amp Avg	150	200	VDL	1200
0 (mV)	100	0	Amp Max	150		
0 AmpX5 (mV)	20	0	Amp Min	150		
1 BONDIX	0					



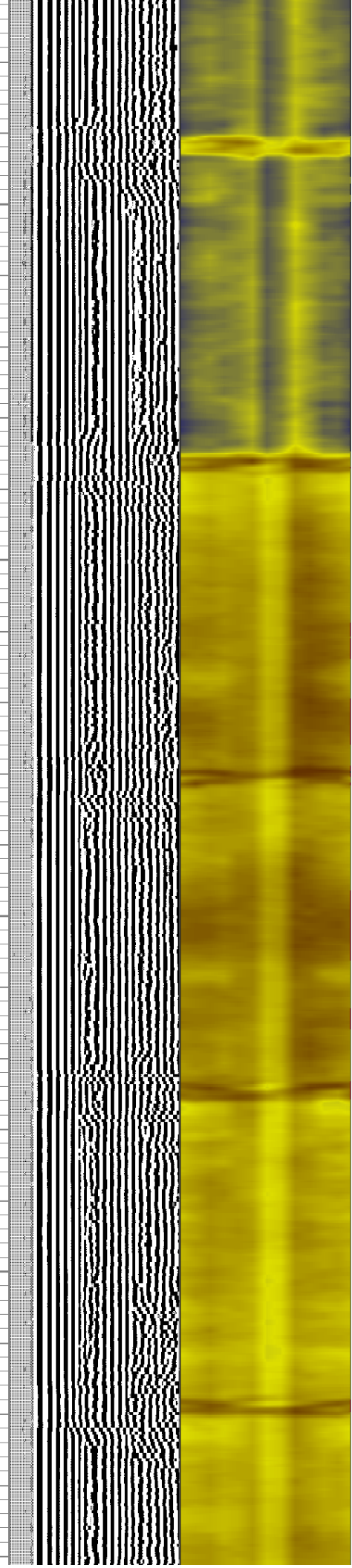
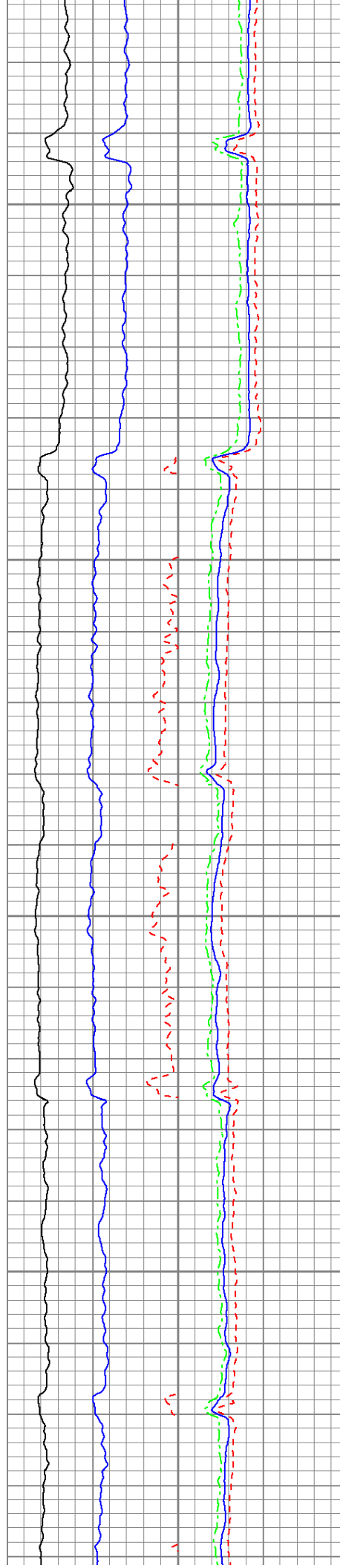
TEMP (degF)

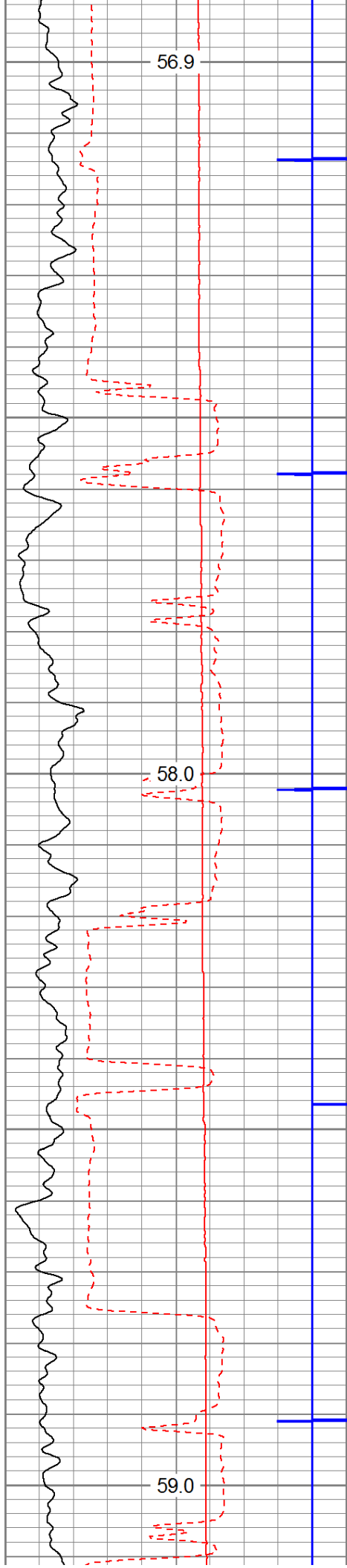




200

300

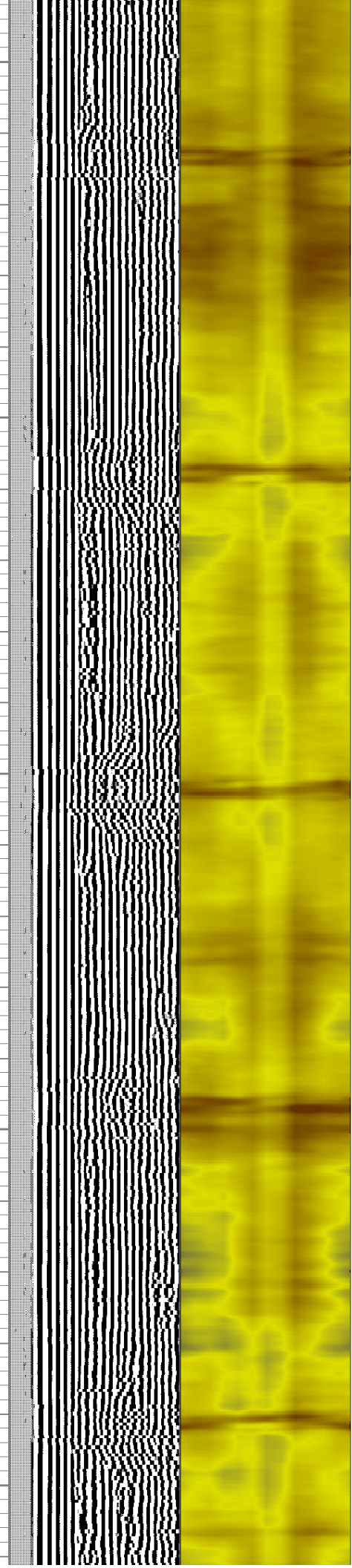
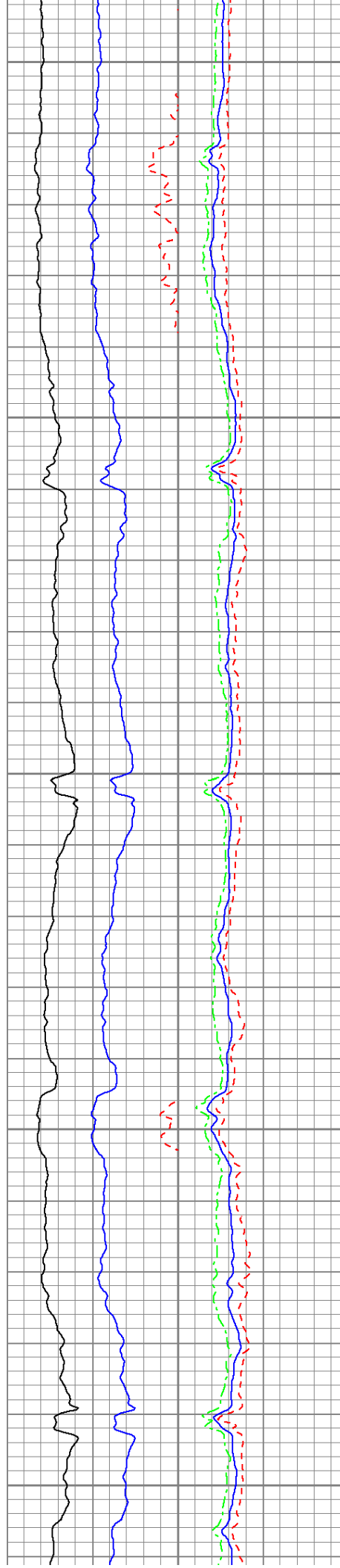


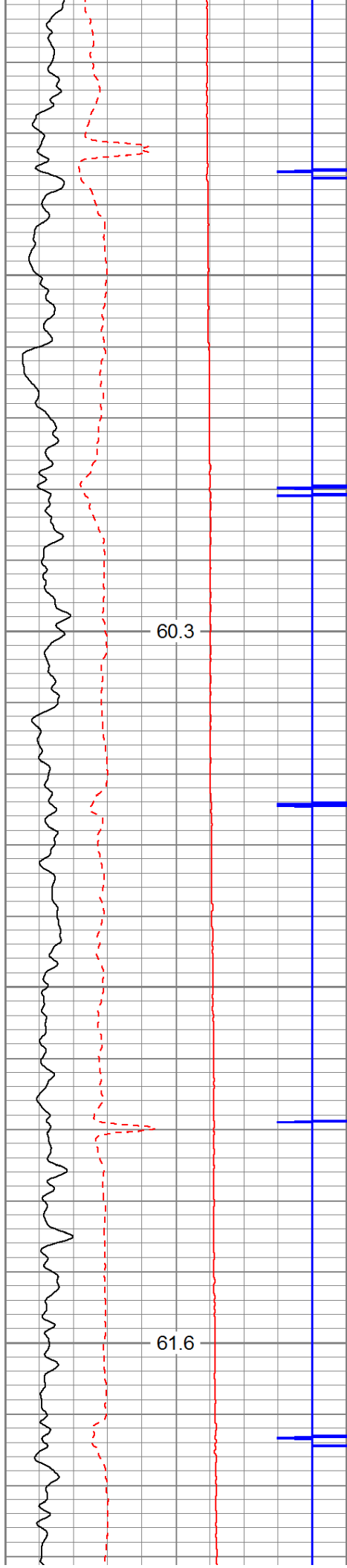


400

500

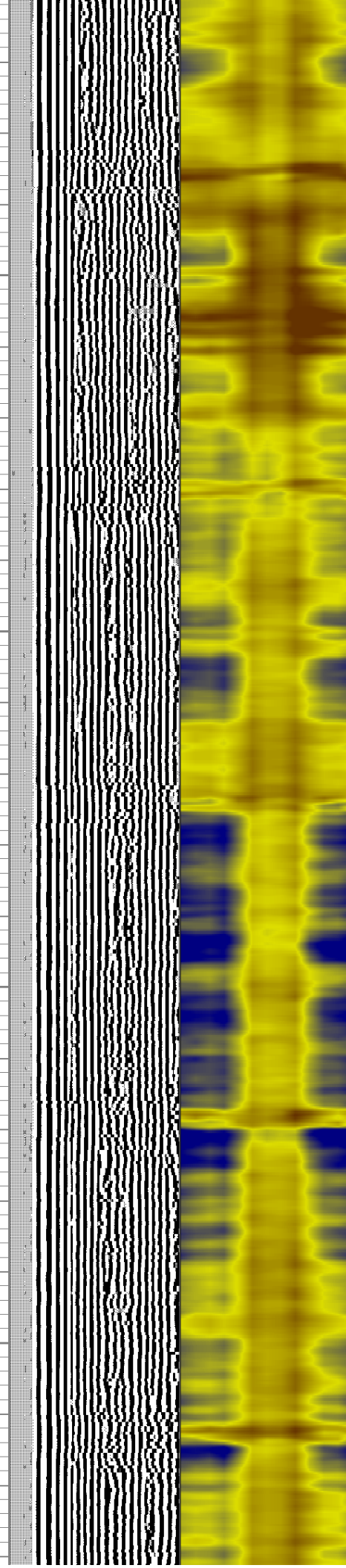
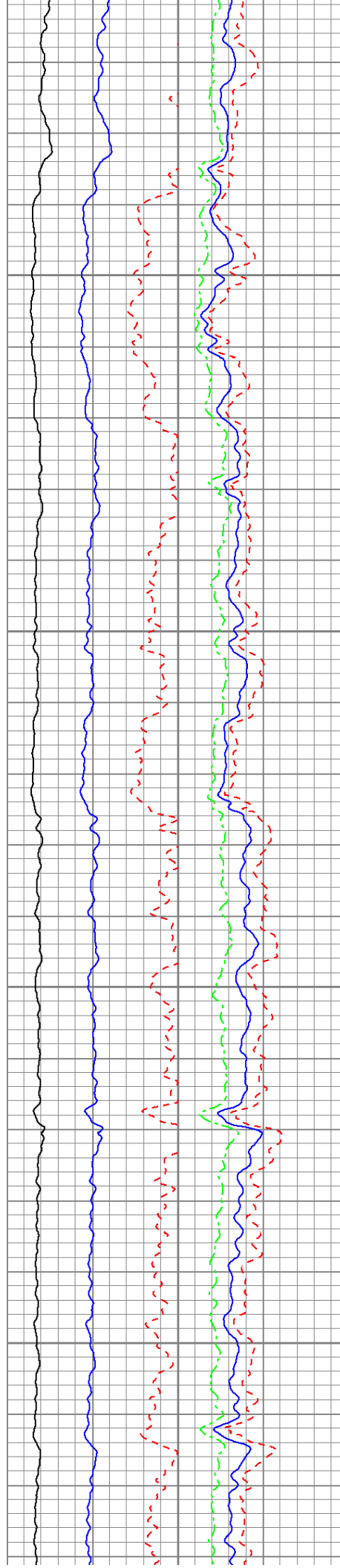
600

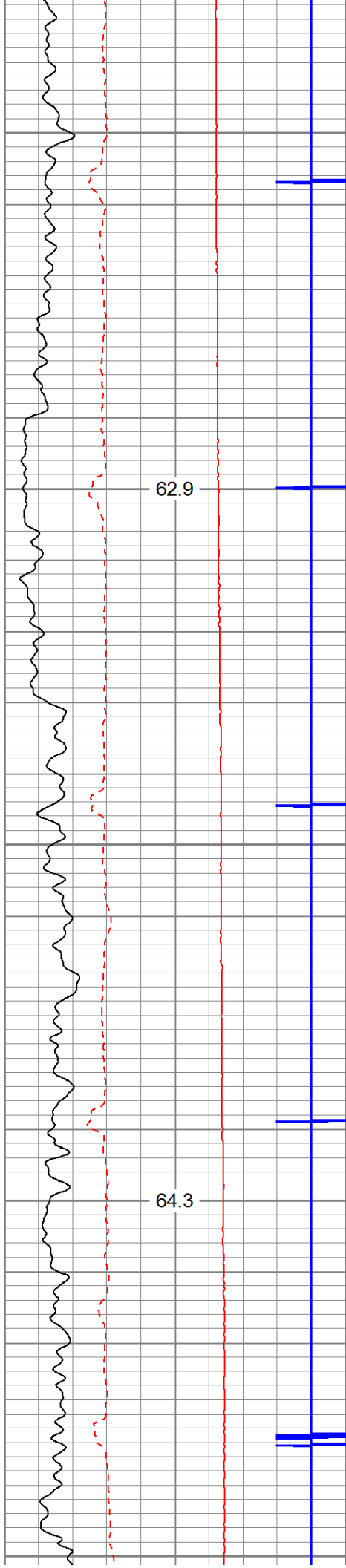




700

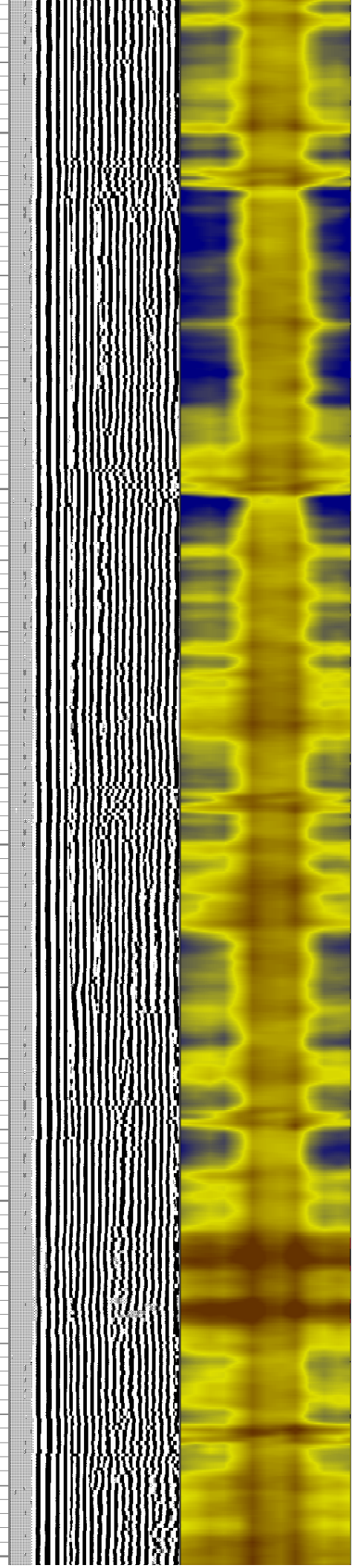
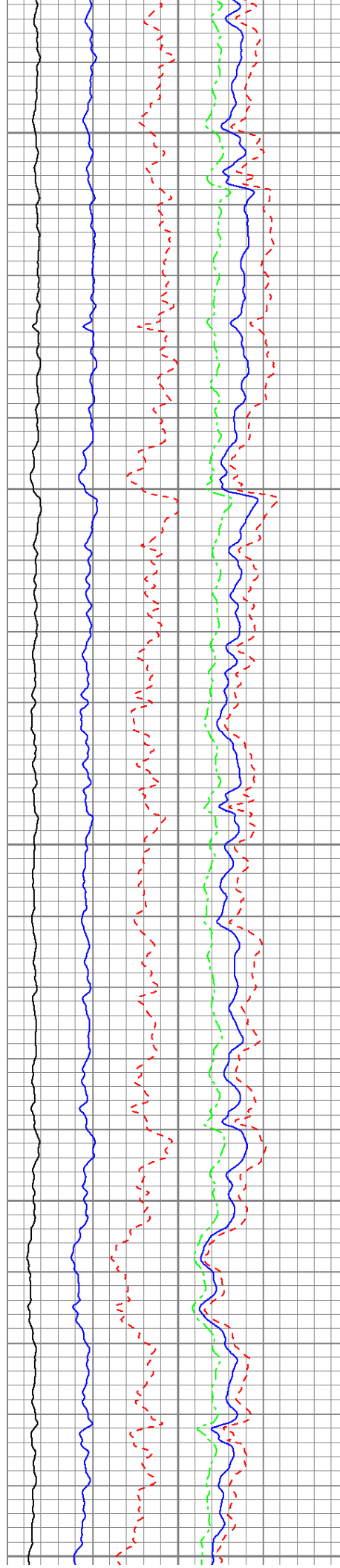
800

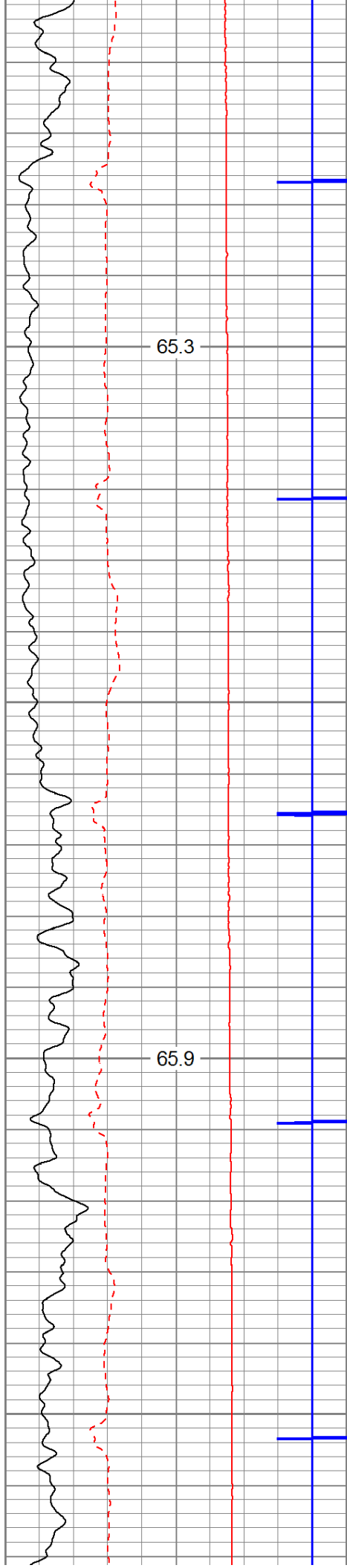




900

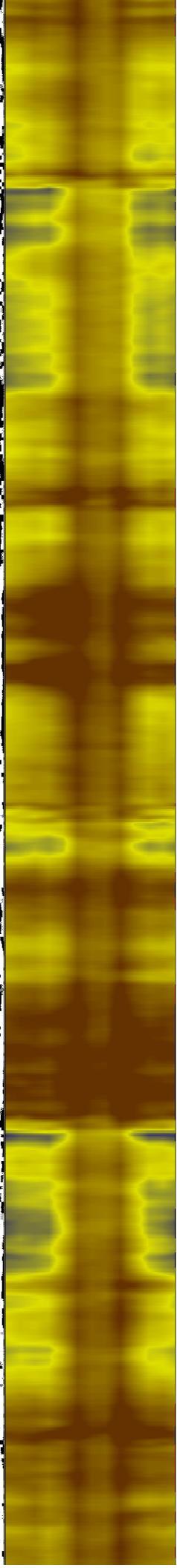
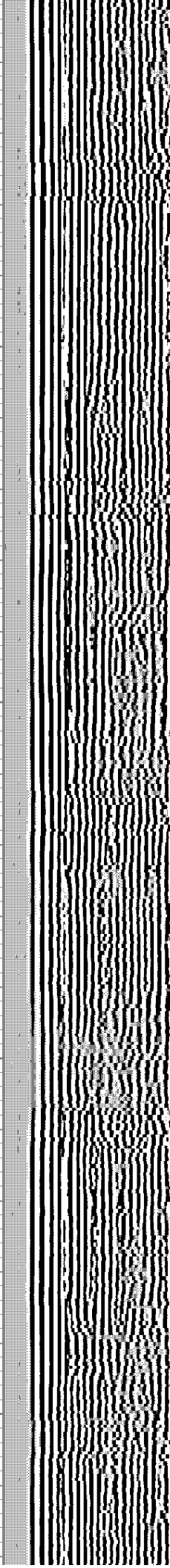
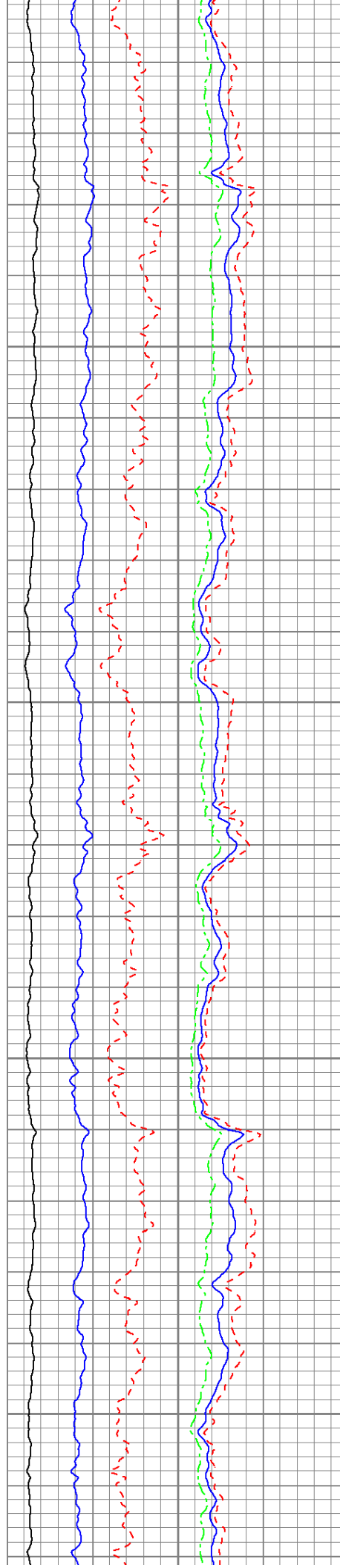
1000

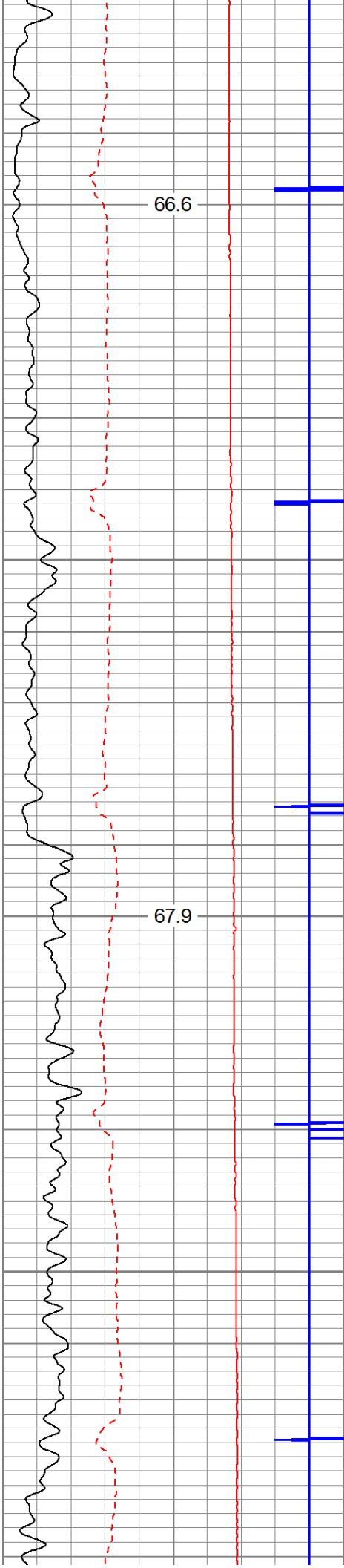




1100

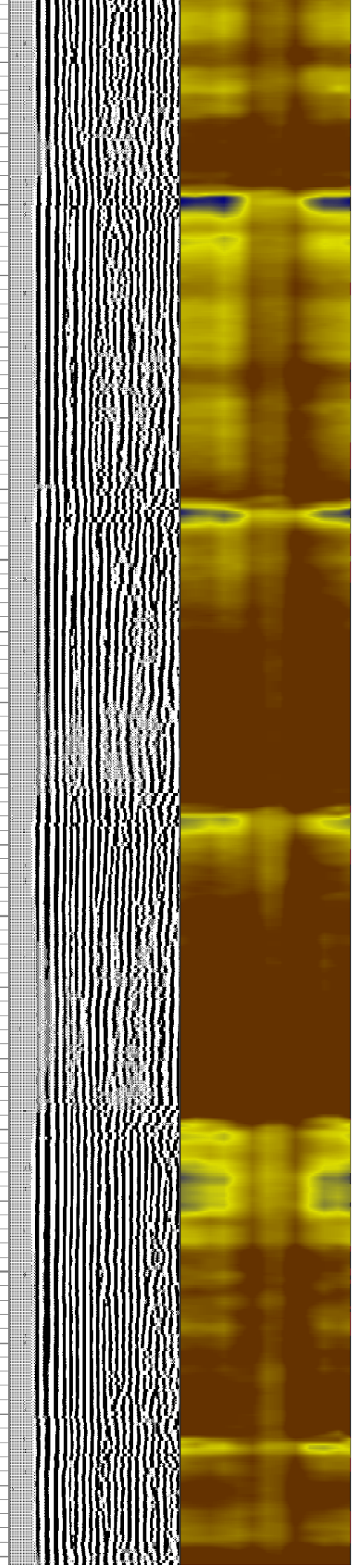
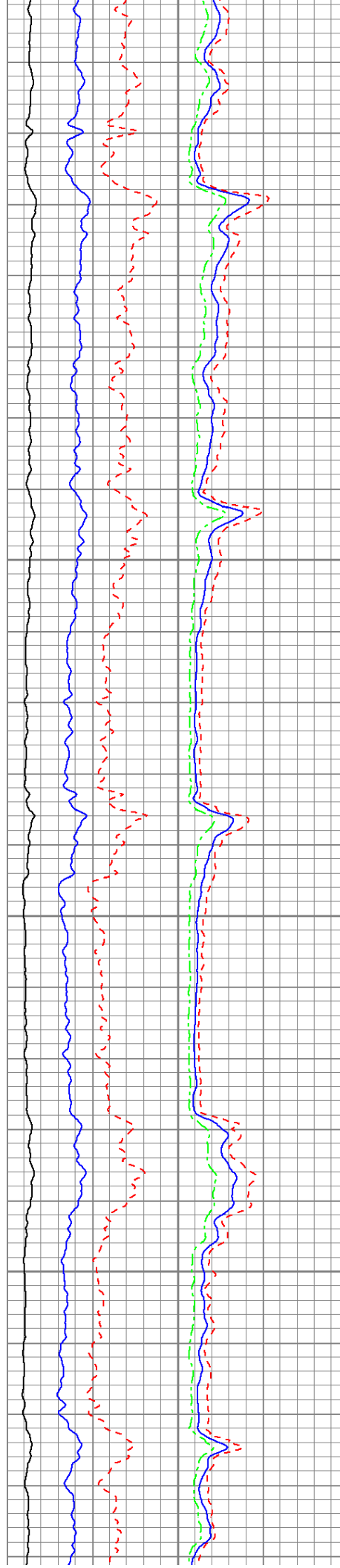
1200

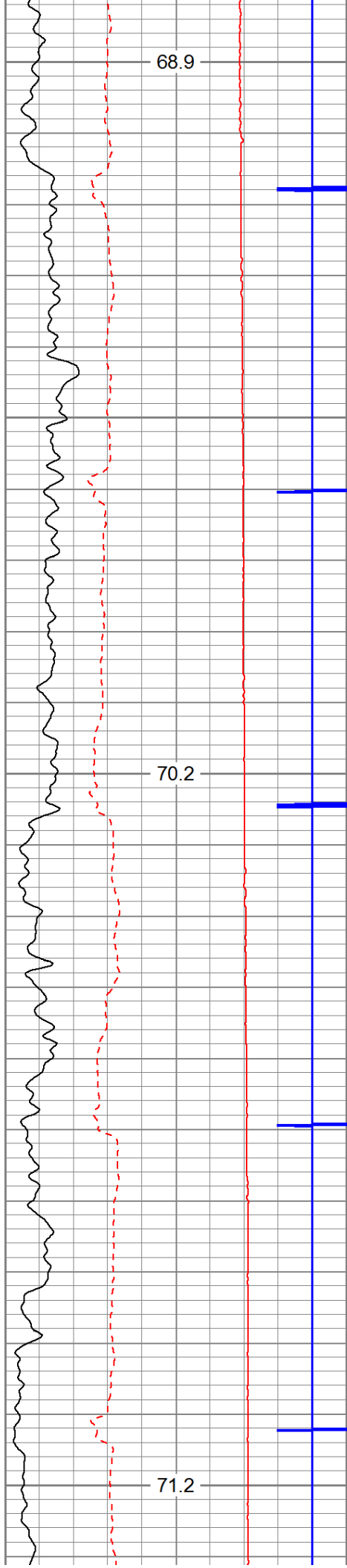




1300

1400

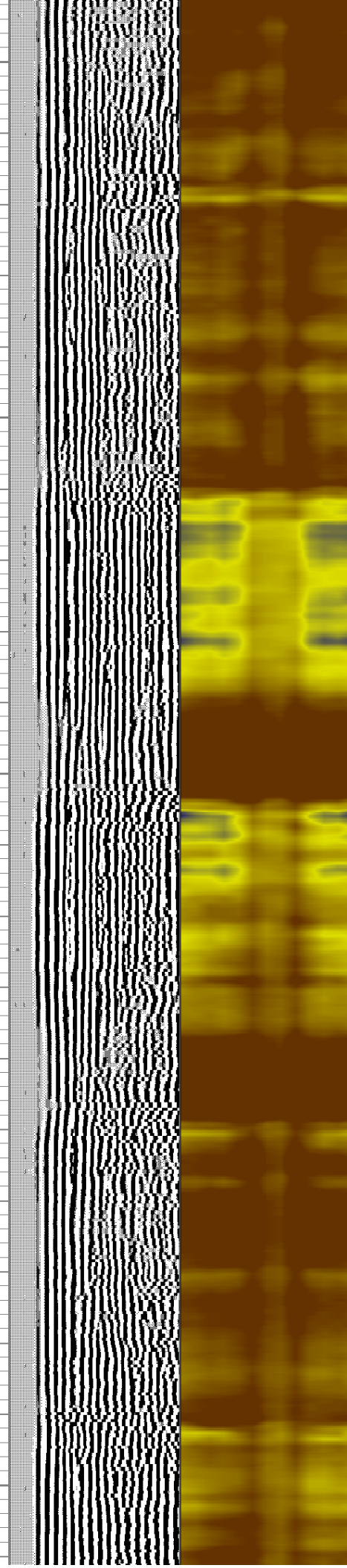
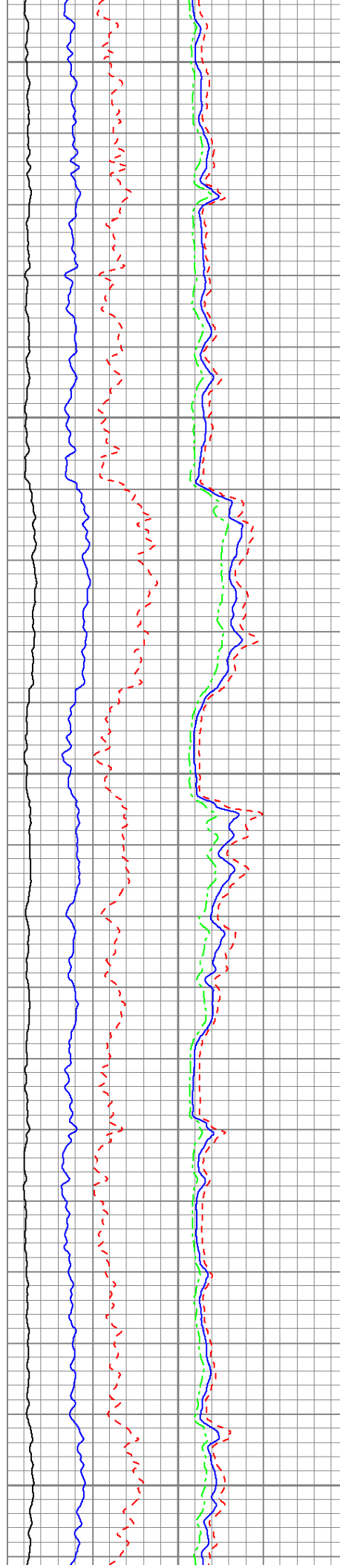


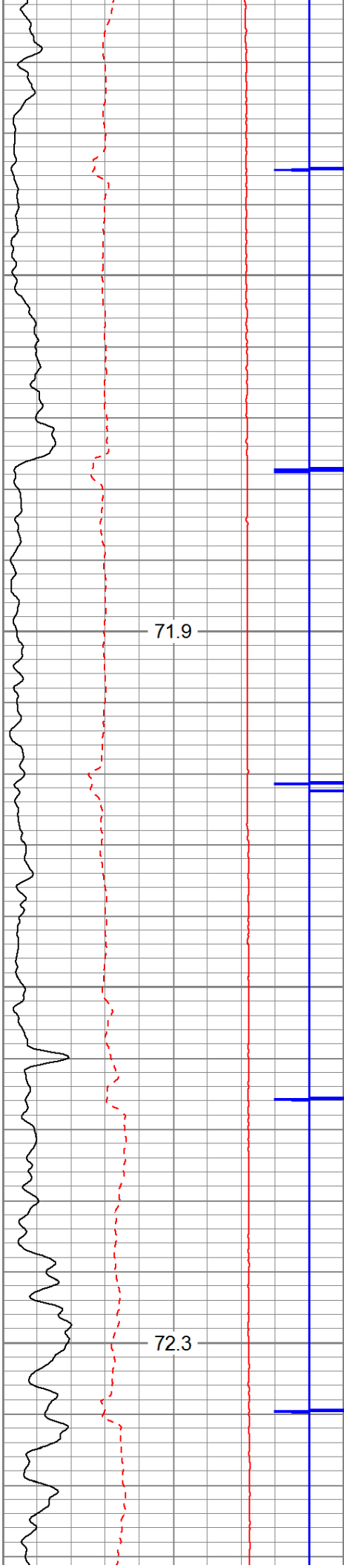


1500

1600

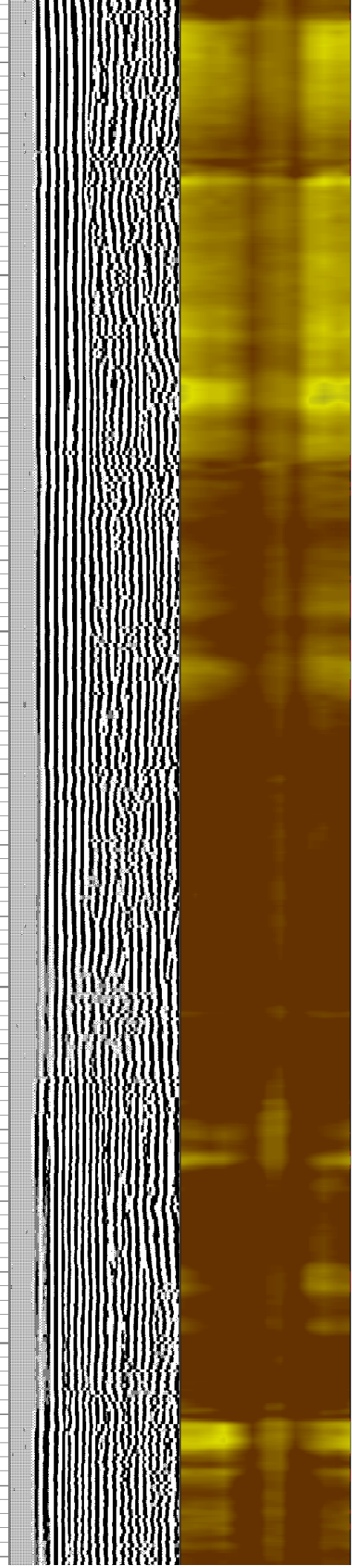
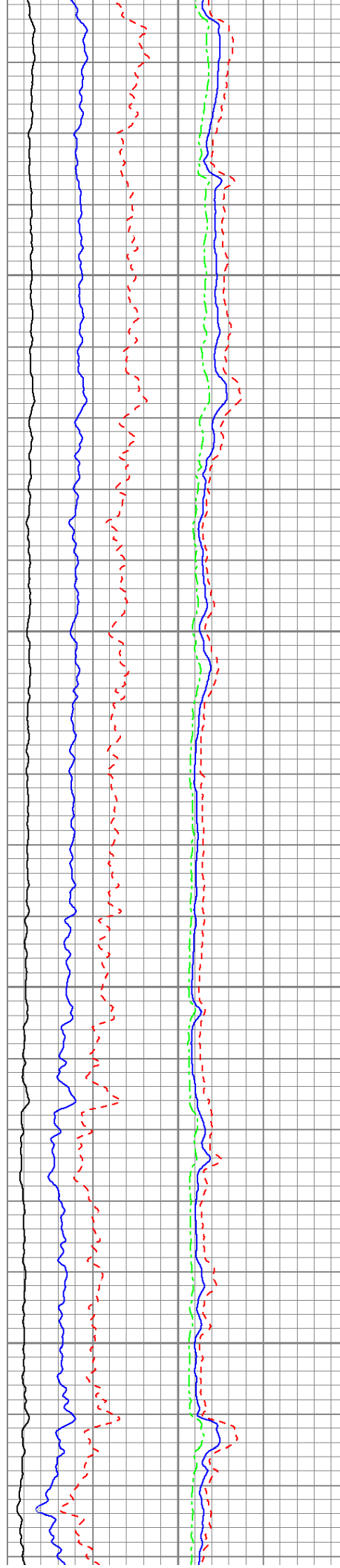
1700

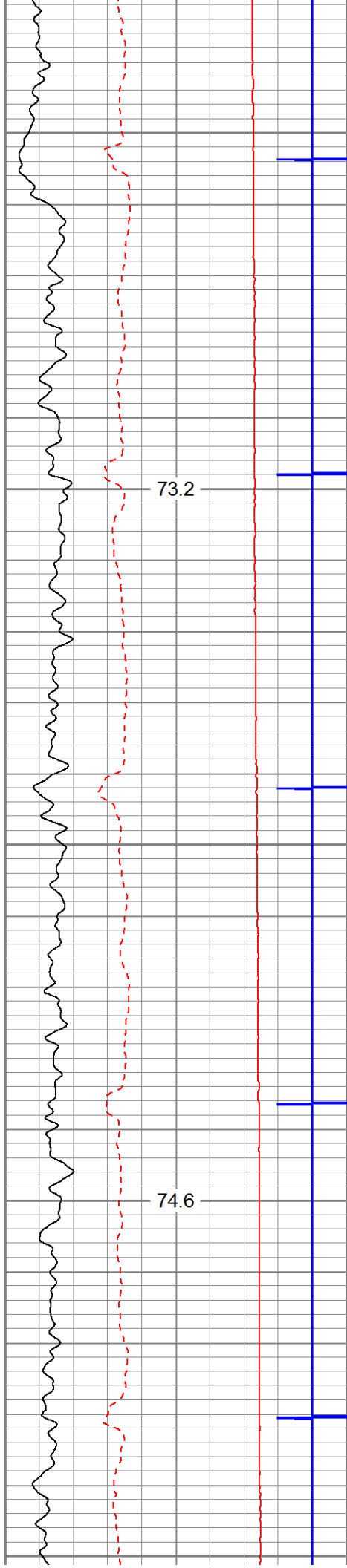




1800

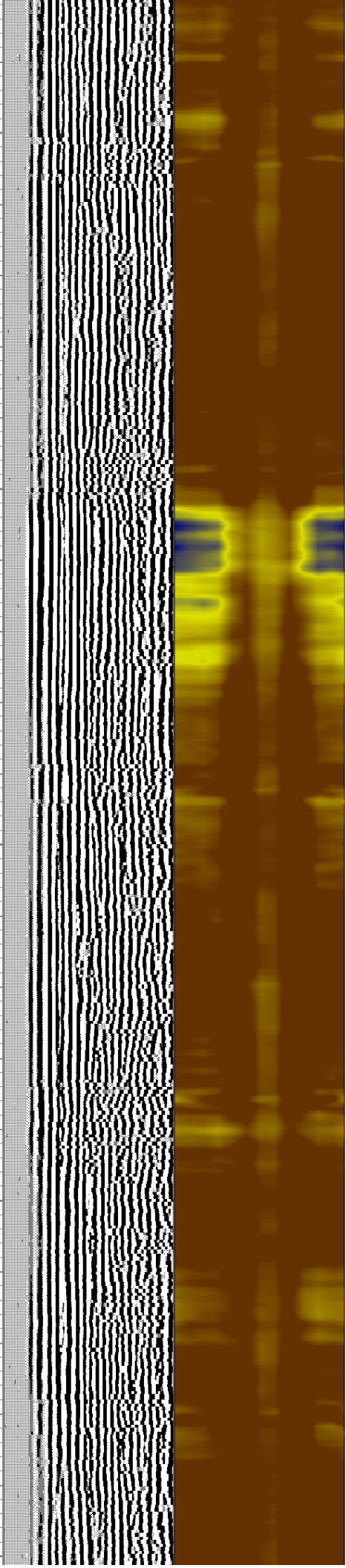
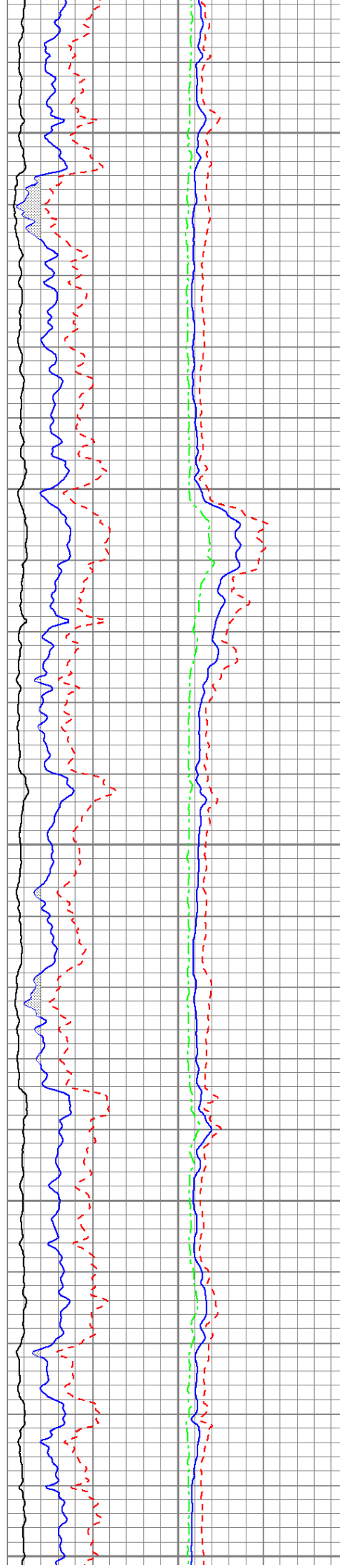
1900

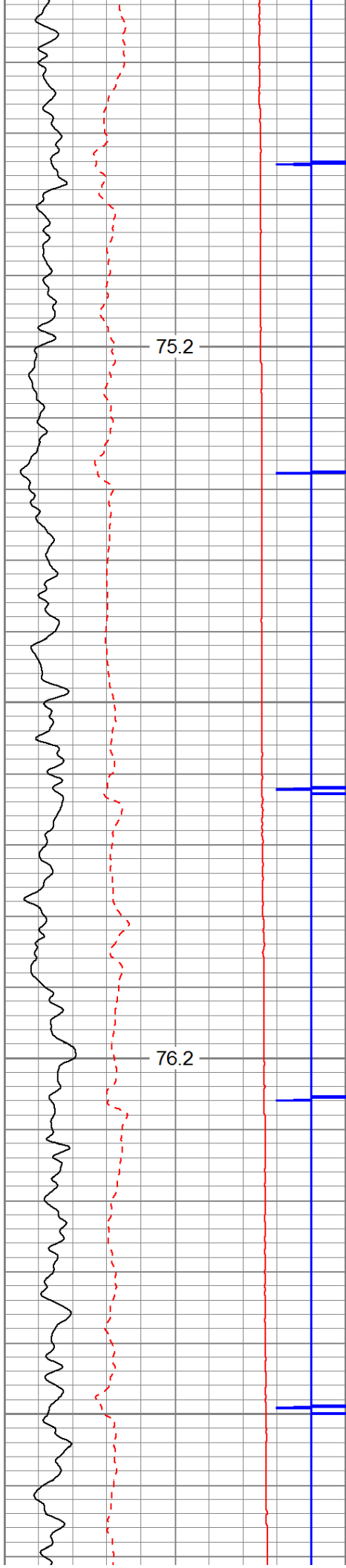




2000

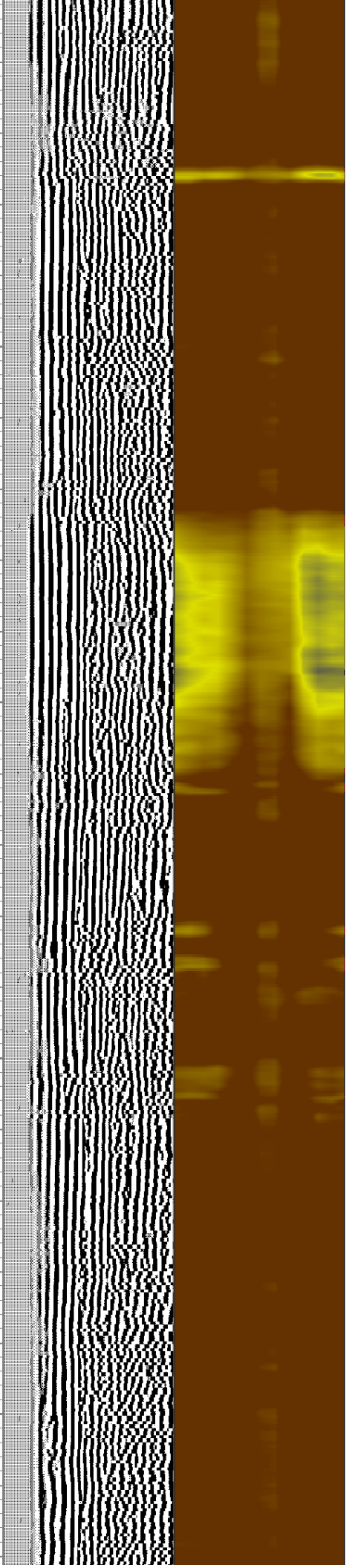
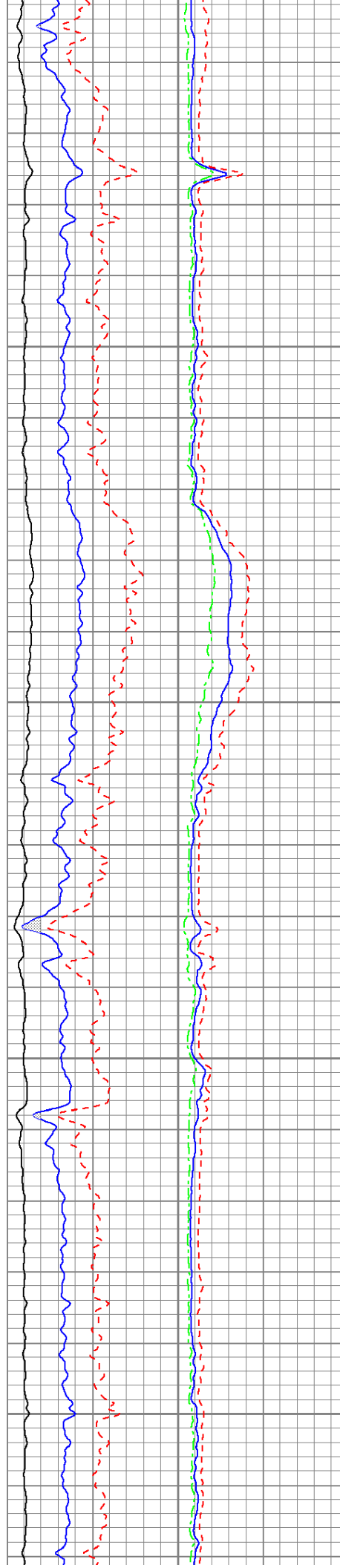
2100

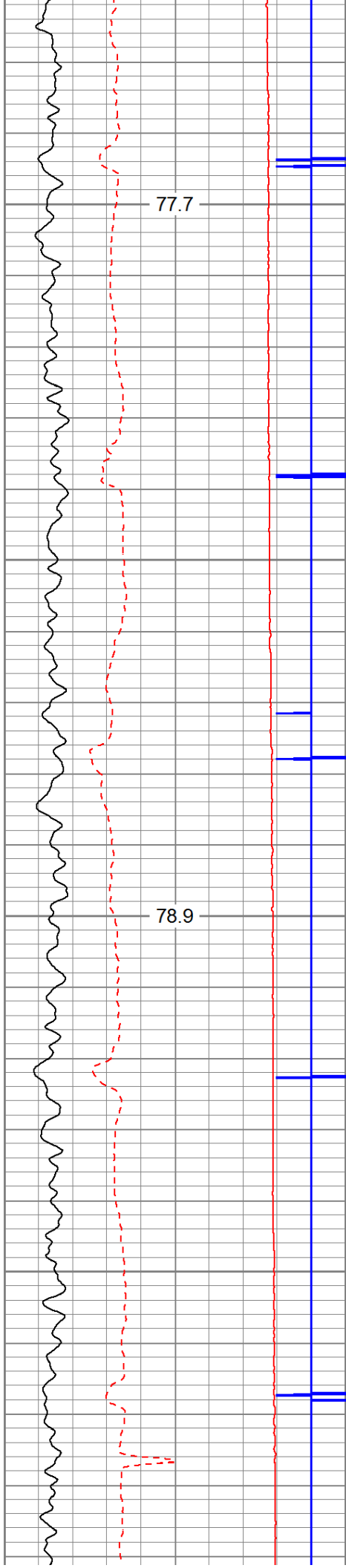




2200

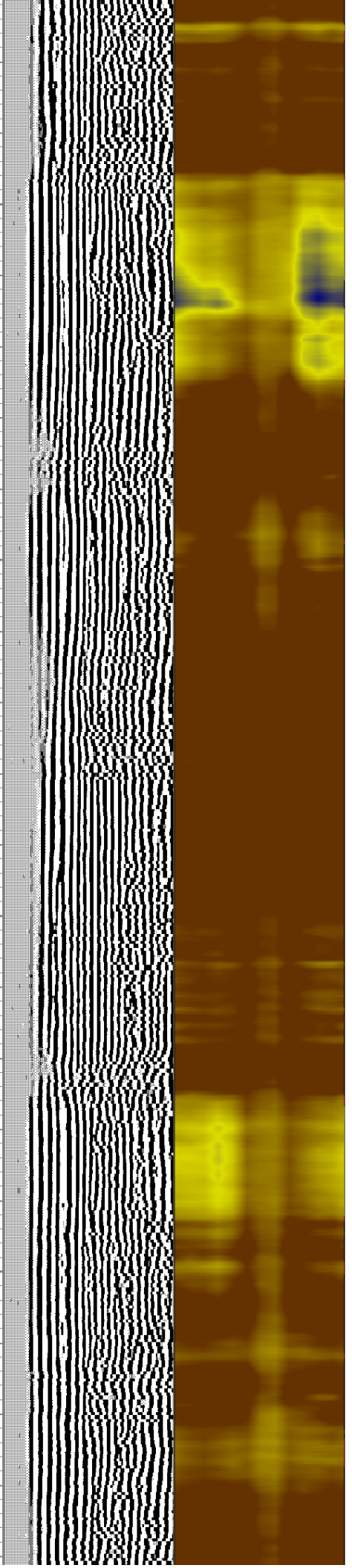
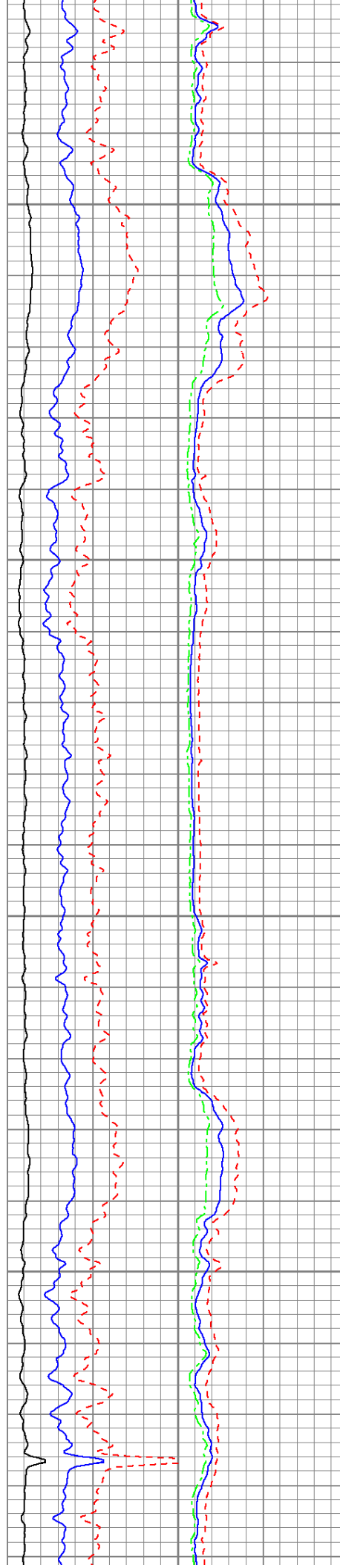
2300

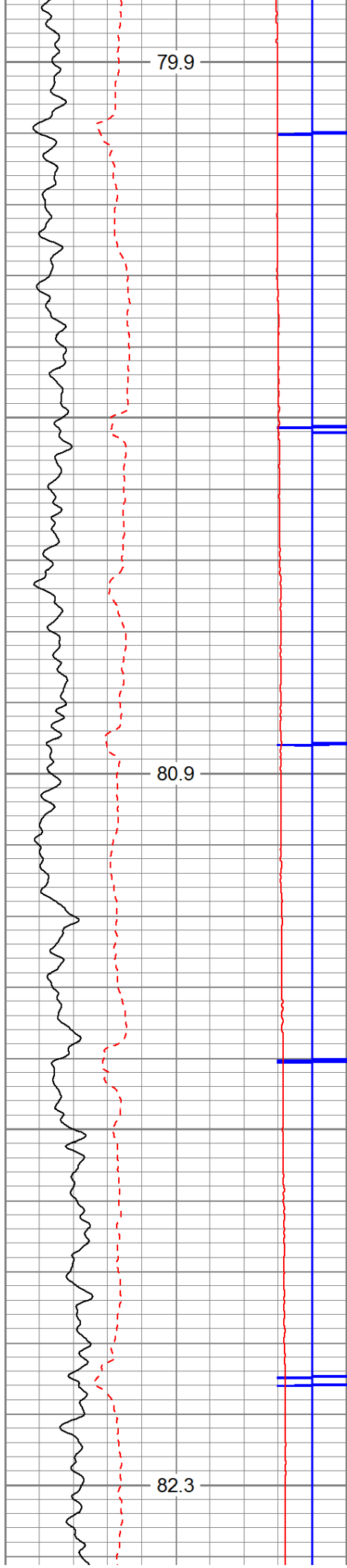




2400

2500

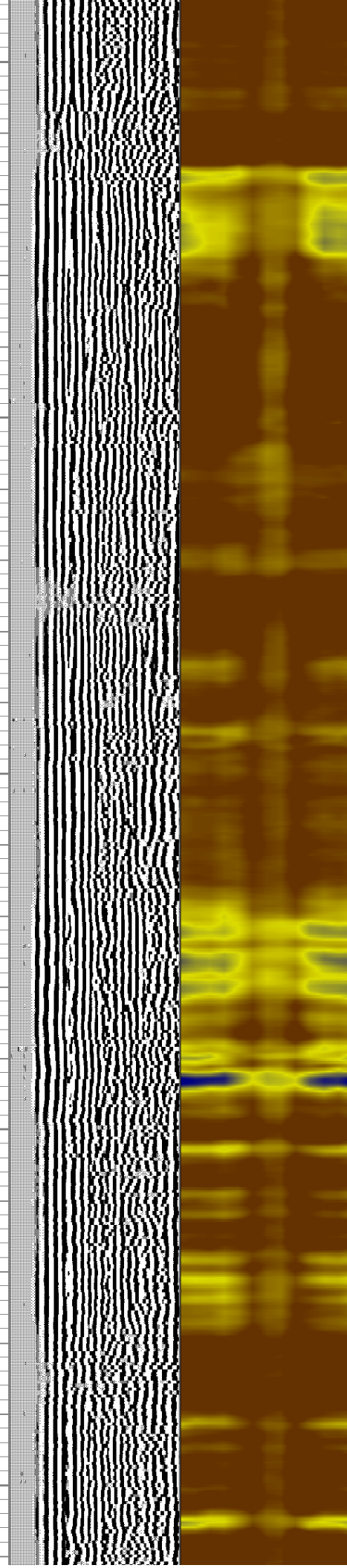
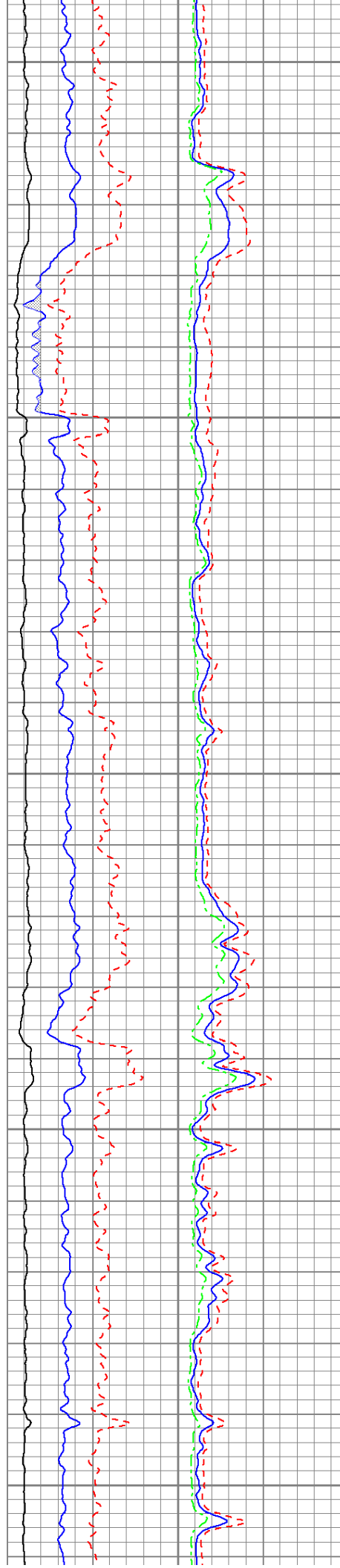


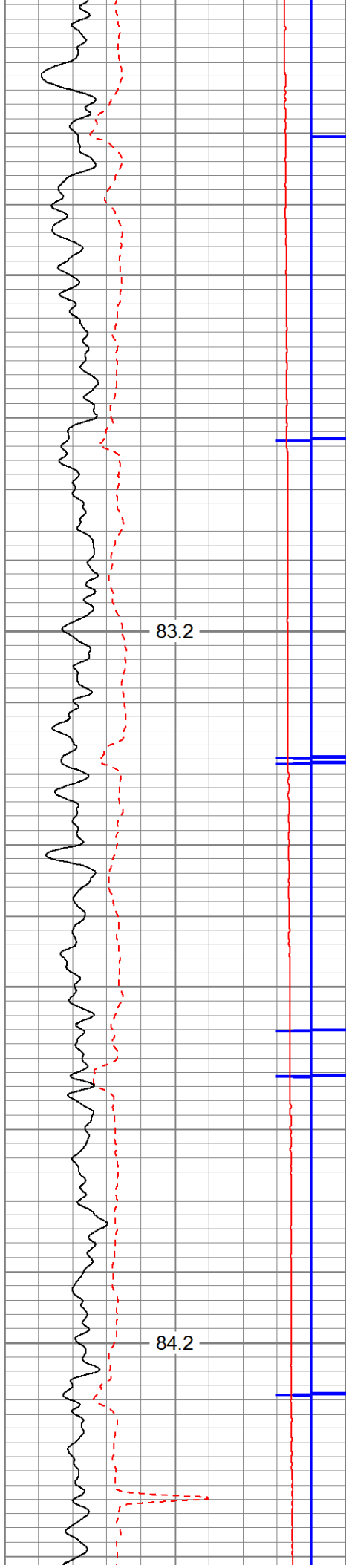


2600

2700

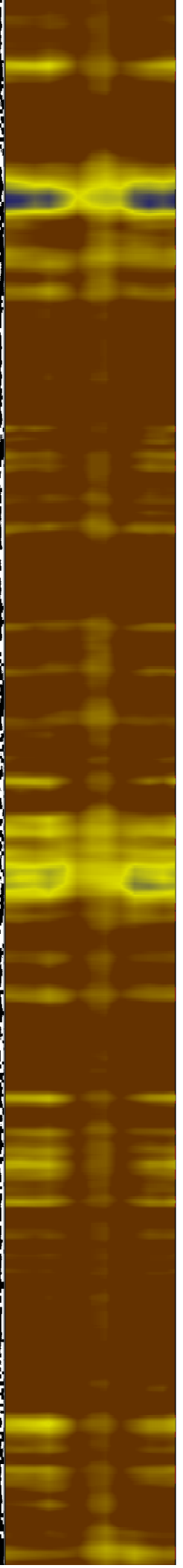
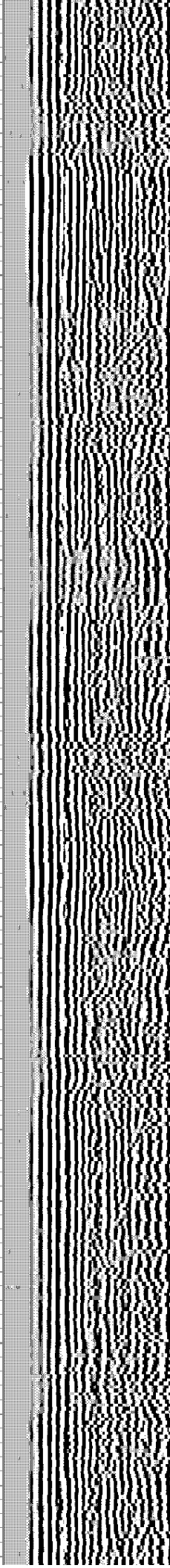
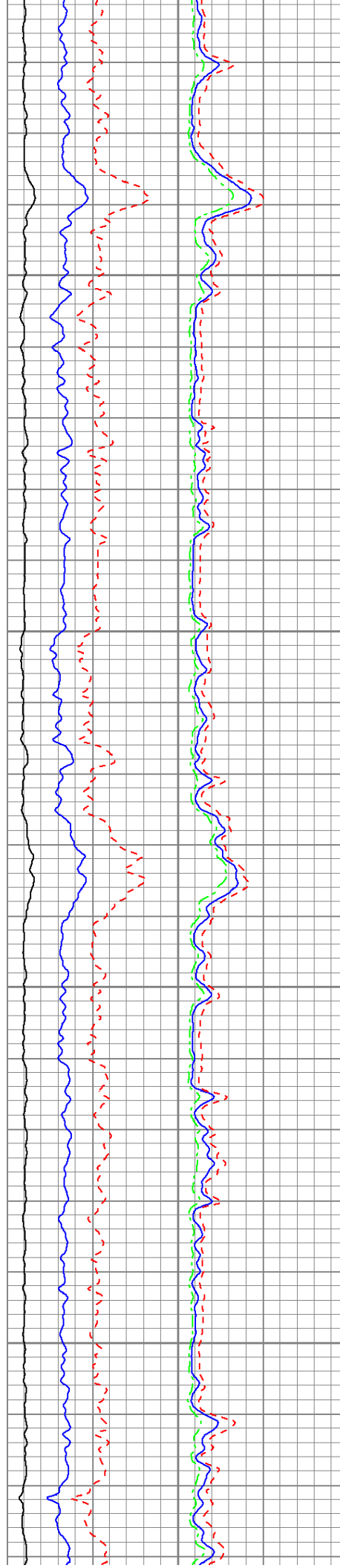
2800

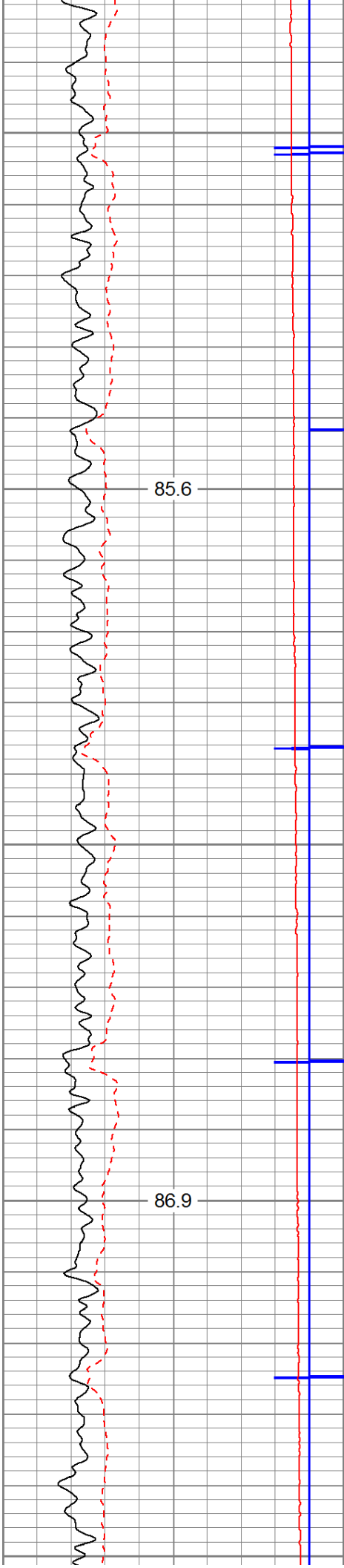




2900

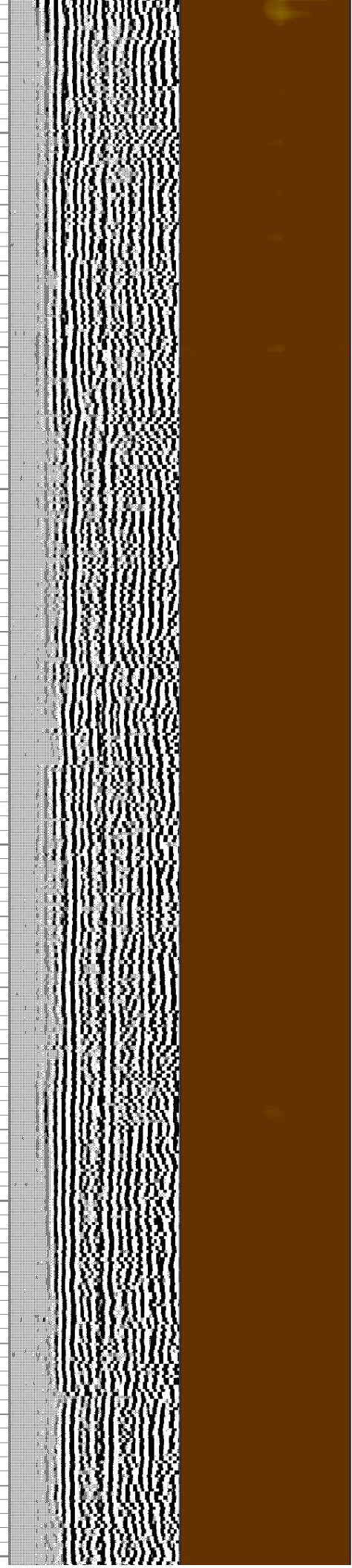
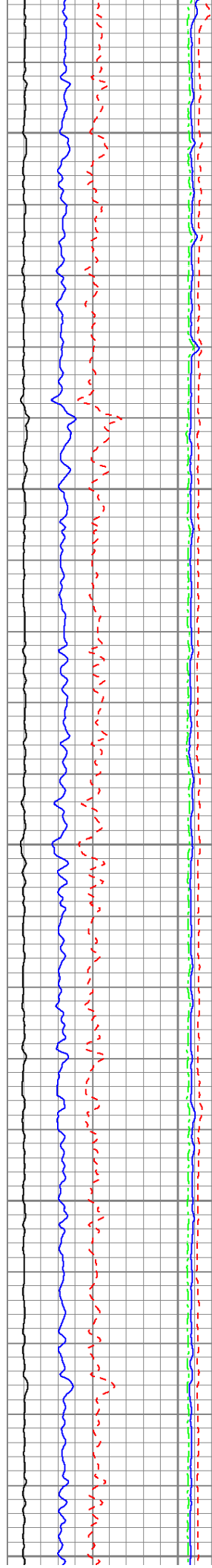
3000

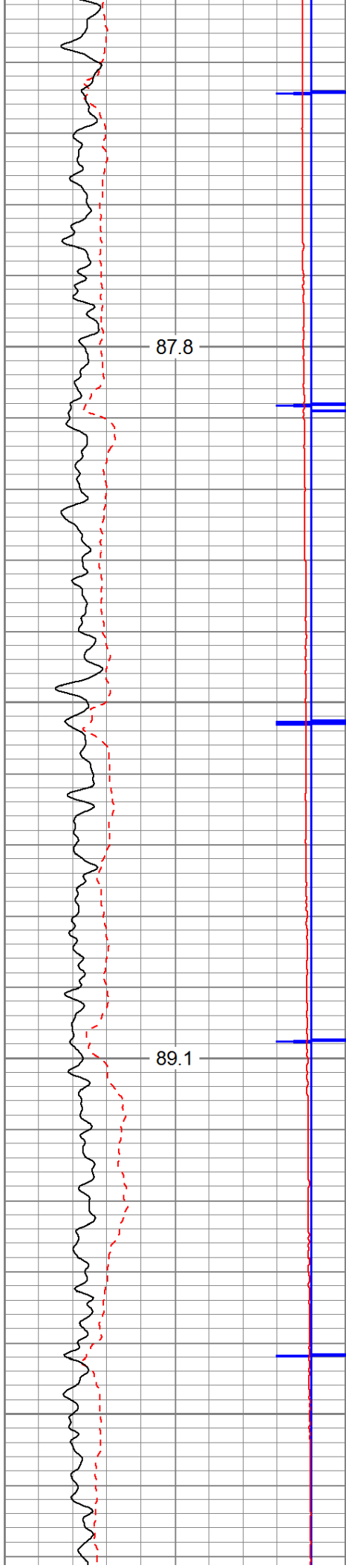




3100

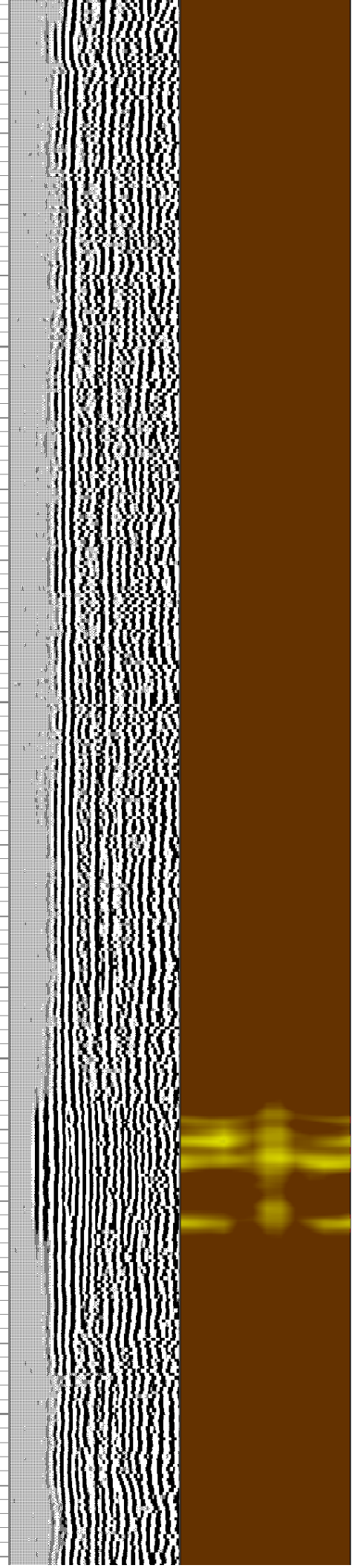
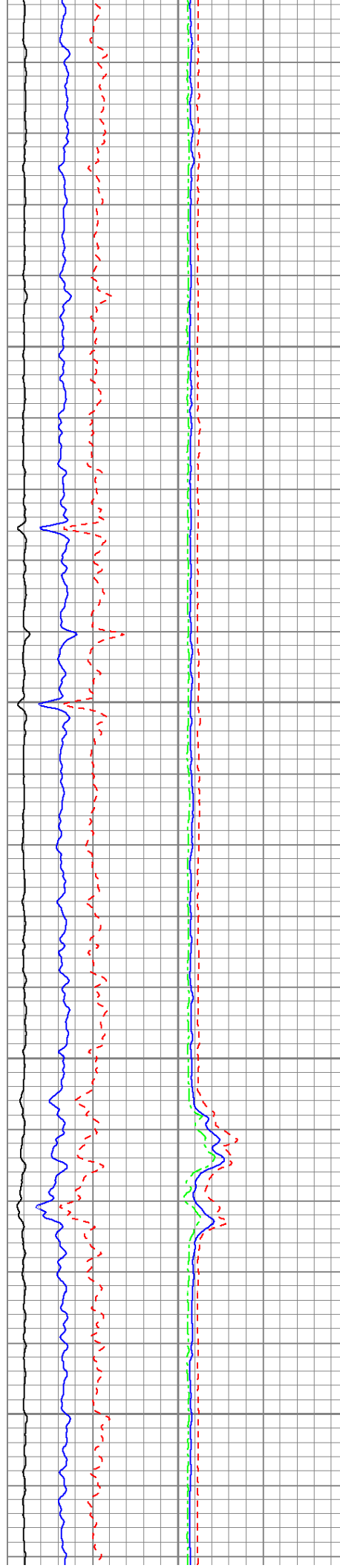
3200

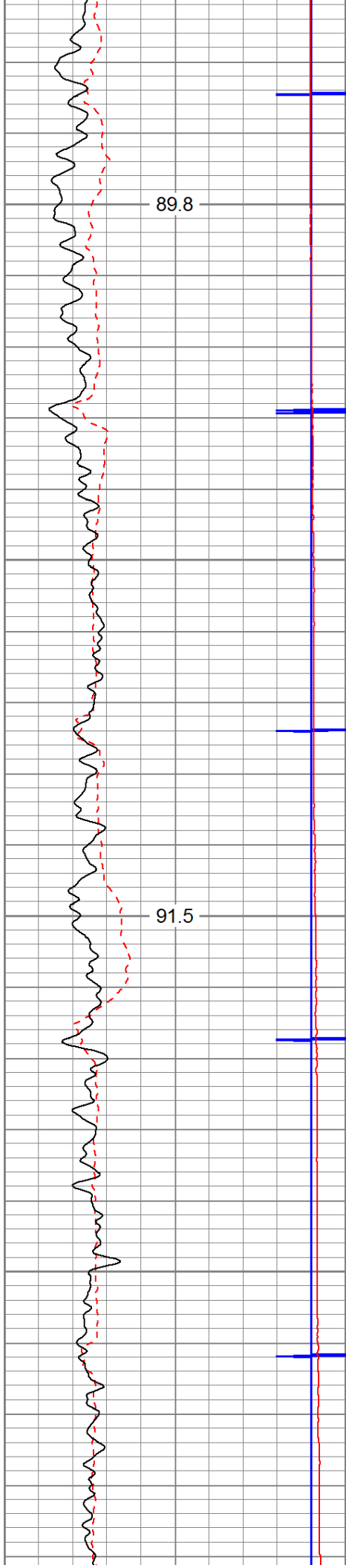




3300

3400





3500

3600

